

CSRNP2 Antibody (C-term)
Affinity Purified Rabbit Polyclonal Antibody (Pab)
Catalog # AP13477B**Specification**

CSRNP2 Antibody (C-term) - Product Information

Application	IF, WB,E
Primary Accession	O9H175
Other Accession	NP_110436.1
Reactivity	Human
Host	Rabbit
Clonality	Polyclonal
Isotype	Rabbit IgG
Antigen Region	509-538

CSRNP2 Antibody (C-term) - Additional Information**Gene ID** 81566**Other Names**

Cysteine/serine-rich nuclear protein 2, CSRNP-2, Protein FAM130A1, TGF-beta-induced apoptosis protein 12, TAIP-12, CSRNP2, C12orf22, FAM130A1, TAIP12

Target/Specificity

This CSRNP2 antibody is generated from rabbits immunized with a KLH conjugated synthetic peptide between 509-538 amino acids from the C-terminal region of human CSRNP2.

Dilution

IF~~1:10~50

WB~~1:1000

Format

Purified polyclonal antibody supplied in PBS with 0.09% (W/V) sodium azide. This antibody is purified through a protein A column, followed by peptide affinity purification.

Storage

Maintain refrigerated at 2-8°C for up to 2 weeks. For long term storage store at -20°C in small aliquots to prevent freeze-thaw cycles.

Precautions

CSRNP2 Antibody (C-term) is for research use only and not for use in diagnostic or therapeutic procedures.

CSRNP2 Antibody (C-term) - Protein Information**Name** CSRNP2**Synonyms** C12orf22, FAM130A1, TAIP12

Function Binds to the consensus sequence 5'-AGAGTG-3' and has transcriptional activator activity (By similarity). May play a role in apoptosis.

Cellular Location

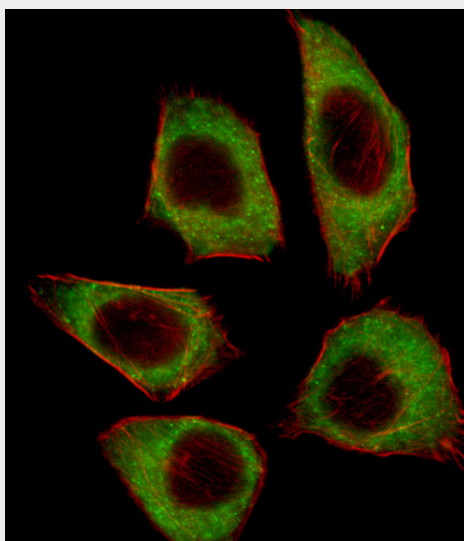
Nucleus.

CSRNP2 Antibody (C-term) - Protocols

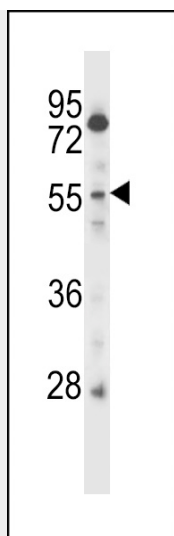
Provided below are standard protocols that you may find useful for product applications.

- [Western Blot](#)
- [Blocking Peptides](#)
- [Dot Blot](#)
- [Immunohistochemistry](#)
- [Immunofluorescence](#)
- [Immunoprecipitation](#)
- [Flow Cytometry](#)
- [Cell Culture](#)

CSRNP2 Antibody (C-term) - Images



Fluorescent image of A549 cell stained with CSRNP2 Antibody (C-term)(Cat#AP13477b).A549 cells were fixed with 4% PFA (20 min), permeabilized with Triton X-100 (0.1%, 10 min), then incubated with CSRNP2 primary antibody (1:25, 1 h at 37°C). For secondary antibody, Alexa Fluor® 488 conjugated donkey anti-rabbit antibody (green) was used (1:400, 50 min at 37°C).Cytoplasmic actin was counterstained with Alexa Fluor® 555 (red) conjugated Phalloidin (7units/ml, 1 h at 37°C).CSRNP2 immunoreactivity is localized to Cytoplasm significantly.



CSRNP2 Antibody (C-term) (Cat. #AP13477b) western blot analysis in CEM cell line lysates (35ug/lane). This demonstrates the CSRNP2 antibody detected the CSRNP2 protein (arrow).

CSRNP2 Antibody (C-term) - Background

CSRNP2 binds to the consensus sequence 5'-AGAGTG-3' and has transcriptional activator activity (By similarity). May play a role in apoptosis.

CSRNP2 Antibody (C-term) - References

Gingras, S., et al. PLoS ONE 2 (8), E808 (2007) :
Colland, F., et al. Genome Res. 14(7):1324-1332(2004)