

SDF2L1 Antibody (C-term)
Affinity Purified Rabbit Polyclonal Antibody (Pab)
Catalog # AP13479B

Specification

SDF2L1 Antibody (C-term) - Product Information

Application	WB, IHC-P, FC,E
Primary Accession	O9HCN8
Other Accession	Q3T083 , NP_071327.2
Reactivity	Human, Mouse
Predicted	Bovine
Host	Rabbit
Clonality	Polyclonal
Isotype	Rabbit IgG
Calculated MW	23598
Antigen Region	160-189

SDF2L1 Antibody (C-term) - Additional Information

Gene ID 23753

Other Names

Stromal cell-derived factor 2-like protein 1, SDF2-like protein 1, PWP1-interacting protein 8, SDF2L1

Target/Specificity

This SDF2L1 antibody is generated from rabbits immunized with a KLH conjugated synthetic peptide between 160-189 amino acids from the C-terminal region of human SDF2L1.

Dilution

WB~~1:1000
IHC-P~~1:10~50
FC~~1:10~50

Format

Purified polyclonal antibody supplied in PBS with 0.09% (W/V) sodium azide. This antibody is purified through a protein A column, followed by peptide affinity purification.

Storage

Maintain refrigerated at 2-8°C for up to 2 weeks. For long term storage store at -20°C in small aliquots to prevent freeze-thaw cycles.

Precautions

SDF2L1 Antibody (C-term) is for research use only and not for use in diagnostic or therapeutic procedures.

SDF2L1 Antibody (C-term) - Protein Information

Name SDF2L1

Cellular Location

Endoplasmic reticulum lumen {ECO:0000255|PROSITE- ProRule:PRU10138}

Tissue Location

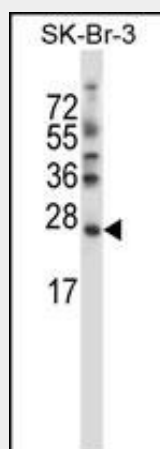
Ubiquitously expressed with high expression in testis, moderate expression in the pancreas, spleen, prostate, small intestine and colon. Very low expression is seen in brain and skeletal muscle.

SDF2L1 Antibody (C-term) - Protocols

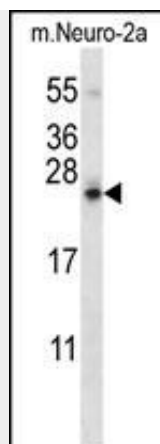
Provided below are standard protocols that you may find useful for product applications.

- [Western Blot](#)
- [Blocking Peptides](#)
- [Dot Blot](#)
- [Immunohistochemistry](#)
- [Immunofluorescence](#)
- [Immunoprecipitation](#)
- [Flow Cytometry](#)
- [Cell Culture](#)

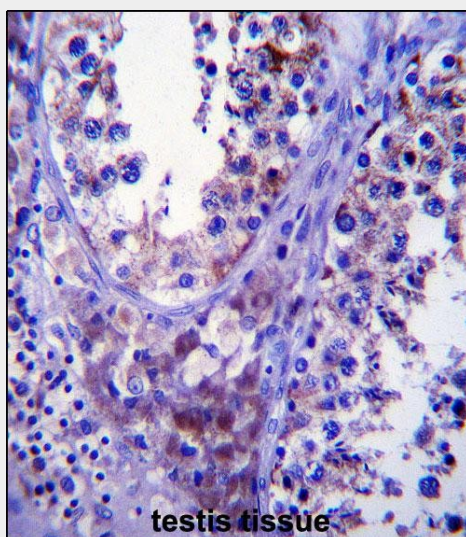
SDF2L1 Antibody (C-term) - Images



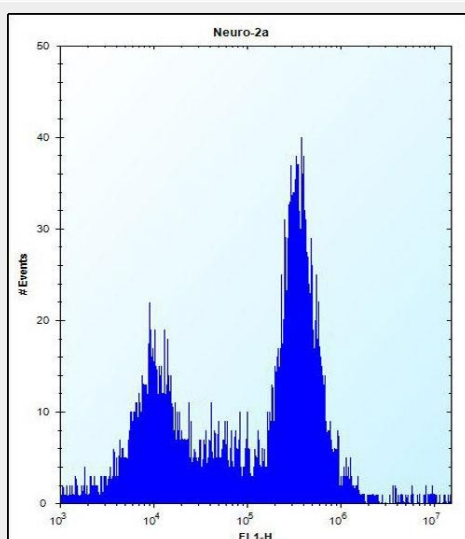
SDF2L1 Antibody (C-term) (Cat. #AP13479b) western blot analysis in SK-BR-3 cell line lysates (35ug/lane). This demonstrates the SDF2L1 antibody detected the SDF2L1 protein (arrow).



SDF2L1 Antibody (C-term) (Cat. #AP13479b) western blot analysis in mouse Neuro-2a cell line lysates (35ug/lane). This demonstrates the SDF2L1 antibody detected the SDF2L1 protein (arrow).



SDF2L1 Antibody (C-term) (Cat. #AP13479b) immunohistochemistry analysis in formalin fixed and paraffin embedded human testis tissue followed by peroxidase conjugation of the secondary antibody and DAB staining. This data demonstrates the use of SDF2L1 Antibody (C-term) for immunohistochemistry. Clinical relevance has not been evaluated.



SDF2L1 Antibody (C-term) (Cat. #AP13479b) flow cytometric analysis of Neuro-2a cells (right histogram) compared to a negative control cell (left histogram). FITC-conjugated donkey-anti-rabbit secondary antibodies were used for the analysis.

SDF2L1 Antibody (C-term) - Background

The specific function of the protein remains unknown.

SDF2L1 Antibody (C-term) - References

Collins, J.E., et al. Genome Biol. 5 (10), R84 (2004) :
Fukuda, S., et al. Biochem. Biophys. Res. Commun. 280(1):407-414(2001)