

MORC1 Antibody (C-term)
Affinity Purified Rabbit Polyclonal Antibody (Pab)
Catalog # AP13528B**Specification**

MORC1 Antibody (C-term) - Product Information

Application	WB,E
Primary Accession	Q86VD1
Other Accession	NP_055244.3
Reactivity	Human
Host	Rabbit
Clonality	Polyclonal
Isotype	Rabbit IgG
Calculated MW	112881
Antigen Region	892-921

MORC1 Antibody (C-term) - Additional Information**Gene ID** 27136**Other Names**MORC family CW-type zinc finger protein 1, Cancer/testis antigen 33, CT33, MORC1
{ECO:0000312|EMBL:AAH503071}**Target/Specificity**

This MORC1 antibody is generated from rabbits immunized with a KLH conjugated synthetic peptide between 892-921 amino acids from the C-terminal region of human MORC1.

Dilution

WB~~1:1000

Format

Purified polyclonal antibody supplied in PBS with 0.09% (W/V) sodium azide. This antibody is purified through a protein A column, followed by peptide affinity purification.

Storage

Maintain refrigerated at 2-8°C for up to 2 weeks. For long term storage store at -20°C in small aliquots to prevent freeze-thaw cycles.

Precautions

MORC1 Antibody (C-term) is for research use only and not for use in diagnostic or therapeutic procedures.

MORC1 Antibody (C-term) - Protein Information**Name** MORC1 {ECO:0000312|EMBL:AAH50307.1}**Function** Required for spermatogenesis (By similarity). Essential for de novo DNA methylation and

silencing of transposable elements in the male embryonic germ cells (By similarity).

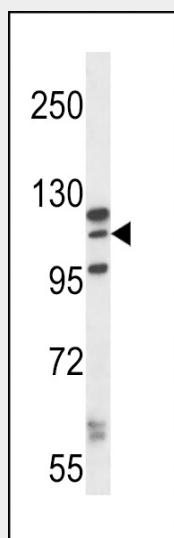
Cellular Location

Nucleus {ECO:0000250|UniProtKB:Q9WVL5}.

MORC1 Antibody (C-term) - Protocols

Provided below are standard protocols that you may find useful for product applications.

- [Western Blot](#)
- [Blocking Peptides](#)
- [Dot Blot](#)
- [Immunohistochemistry](#)
- [Immunofluorescence](#)
- [Immunoprecipitation](#)
- [Flow Cytometry](#)
- [Cell Culture](#)

MORC1 Antibody (C-term) - Images

MORC1 Antibody (C-term) (Cat. #AP13528b) western blot analysis in K562 cell line lysates (35ug/lane). This demonstrates the MORC1 antibody detected the MORC1 protein (arrow).

MORC1 Antibody (C-term) - Background

This gene encodes the human homolog of mouse morc and like the mouse protein it is testis-specific. Mouse studies support a testis-specific function since only male knockout mice are infertile; infertility is the only apparent defect. These studies further support a role for this protein early in spermatogenesis, possibly by affecting entry into apoptosis because testis from knockout mice show greatly increased numbers of apoptotic cells.

MORC1 Antibody (C-term) - References

Rose, J. Phd, et al. Mol. Med. (2010) In press :
Inoue, N., et al. Cytogenet. Cell Genet. 90 (1-2), 123-125 (2000) :

Inoue, N., et al. Hum. Mol. Genet. 8(7):1201-1207(1999)