

**ACTG2 Antibody (C-term)**  
**Affinity Purified Rabbit Polyclonal Antibody (Pab)**  
**Catalog # AP13537b****Specification**

---

**ACTG2 Antibody (C-term) - Product Information**

|                   |  |
|-------------------|--|
| Application       | WB, IHC-P,E  |
| Primary Accession | <a href="#">P63267</a>   |
| Other Accession   | <a href="#">P63269</a> , <a href="#">P63268</a> , <a href="#">P63270</a> , <a href="#">Q5E9B5</a> ,<br><a href="#">NP_001606.1</a> |
| Reactivity        | Human  |
| Predicted         | Bovine, Chicken, Mouse, Rat  |
| Host              | Rabbit   |
| Clonality         | Polyclonal   |
| Isotype           | Rabbit IgG   |
| Calculated MW     | 41877  |
| Antigen Region    | 343-371  |

**ACTG2 Antibody (C-term) - Additional Information****Gene ID 72****Other Names**

Actin, gamma-enteric smooth muscle, Alpha-actin-3, Gamma-2-actin, Smooth muscle gamma-actin, ACTG2, ACTA3, ACTL3, ACTSG

**Target/Specificity**

This ACTG2 antibody is generated from rabbits immunized with a KLH conjugated synthetic peptide between 343-371 amino acids from the C-terminal region of human ACTG2.

**Dilution**

WB~~1:1000  
IHC-P~~1:10~50

**Format**

Purified polyclonal antibody supplied in PBS with 0.09% (W/V) sodium azide. This antibody is purified through a protein A column, followed by peptide affinity purification.

**Storage**

Maintain refrigerated at 2-8°C for up to 2 weeks. For long term storage store at -20°C in small aliquots to prevent freeze-thaw cycles.

**Precautions**

ACTG2 Antibody (C-term) is for research use only and not for use in diagnostic or therapeutic procedures.

**ACTG2 Antibody (C-term) - Protein Information**

**Name** ACTG2

**Synonyms** ACTA3, ACTL3, ACTSG

**Function** Actins are highly conserved proteins that are involved in various types of cell motility and are ubiquitously expressed in all eukaryotic cells.

**Cellular Location**

Cytoplasm, cytoskeleton.

**Tissue Location**

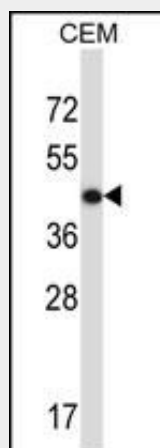
In the intestine, abundantly expressed in smooth muscle cells of muscularis mucosa and muscularis propria. Also detected in intestinal vascular smooth muscle cells

**ACTG2 Antibody (C-term) - Protocols**

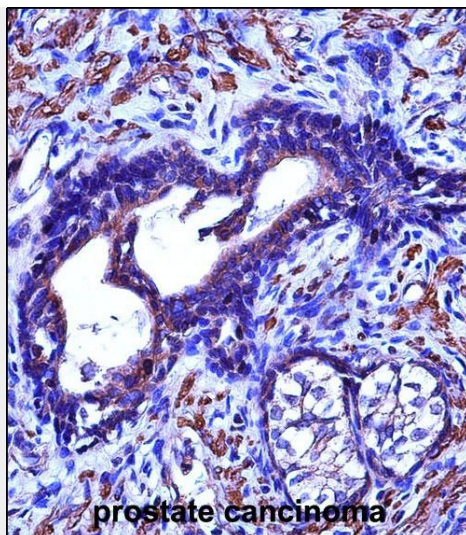
Provided below are standard protocols that you may find useful for product applications.

- [Western Blot](#)
- [Blocking Peptides](#)
- [Dot Blot](#)
- [Immunohistochemistry](#)
- [Immunofluorescence](#)
- [Immunoprecipitation](#)
- [Flow Cytometry](#)
- [Cell Culture](#)

**ACTG2 Antibody (C-term) - Images**



ACTG2 Antibody (C-term) (Cat. #AP13537b) western blot analysis in CEM cell line lysates (35ug/lane). This demonstrates the ACTG2 antibody detected the ACTG2 protein (arrow).



ACTG2 Antibody (C-term) (Cat. #AP13537b) immunohistochemistry analysis in formalin fixed and paraffin embedded human prostate carcinoma followed by peroxidase conjugation of the secondary antibody and DAB staining. This data demonstrates the use of ACTG2 Antibody (C-term) for immunohistochemistry. Clinical relevance has not been evaluated.

#### **ACTG2 Antibody (C-term) - Background**

Actins are highly conserved proteins that are involved in various types of cell motility, and maintenance of the cytoskeleton. In vertebrates, three main groups of actin isoforms, alpha, beta and gamma have been identified. The alpha actins are found in muscle tissues and are a major constituent of the contractile apparatus. The beta and gamma actins co-exist in most cell types as components of the cytoskeleton, and as mediators of internal cell motility. Actin, gamma 2, encoded by this gene, is a smooth muscle actin found in enteric tissues.

#### **ACTG2 Antibody (C-term) - References**

Sun, Q., et al. J. Biol. Chem. 284(47):32582-32590(2009)  
Laasanen, J., et al. Fetal. Diagn. Ther. 23(1):36-40(2008)  
Goldberg, M.T., et al. J. Invest. Dermatol. 127(11):2645-2655(2007)  
Yonemoto, S., et al. Clin. Exp. Nephrol. 10(3):186-192(2006)  
Chang, K.W., et al. Hepatol. Res. 36(1):33-39(2006)