

RIBC2 Antibody (N-term)
Affinity Purified Rabbit Polyclonal Antibody (Pab)
Catalog # AP13580A**Specification**

RIBC2 Antibody (N-term) - Product Information

Application	WB, IHC-P,E
Primary Accession	O9H4K1
Other Accession	NP_056468.2
Reactivity	Human
Host	Rabbit
Clonality	Polyclonal
Isotype	Rabbit IgG
Calculated MW	45427
Antigen Region	64-93

RIBC2 Antibody (N-term) - Additional Information**Gene ID** 26150**Other Names**

RIB43A-like with coiled-coils protein 2, RIBC2, C22orf11

Target/Specificity

This RIBC2 antibody is generated from rabbits immunized with a KLH conjugated synthetic peptide between 64-93 amino acids from the N-terminal region of human RIBC2.

Dilution

WB~~1:1000

IHC-P~~1:10~50

Format

Purified polyclonal antibody supplied in PBS with 0.09% (W/V) sodium azide. This antibody is purified through a protein A column, followed by peptide affinity purification.

Storage

Maintain refrigerated at 2-8°C for up to 2 weeks. For long term storage store at -20°C in small aliquots to prevent freeze-thaw cycles.

Precautions

RIBC2 Antibody (N-term) is for research use only and not for use in diagnostic or therapeutic procedures.

RIBC2 Antibody (N-term) - Protein Information**Name** RIBC2 ([HGNC:13241](#))**Synonyms** C22orf11

Function Microtubule inner protein (MIP) part of the dynein-decorated doublet microtubules (DMTs) in cilia axoneme, which is required for motile cilia beating.

Cellular Location

Cytoplasm, cytoskeleton, cilium axoneme

Tissue Location

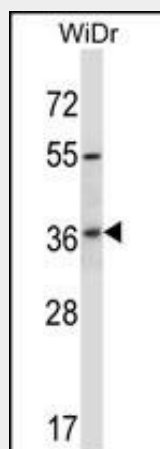
Expressed in airway epithelial cells.

RIBC2 Antibody (N-term) - Protocols

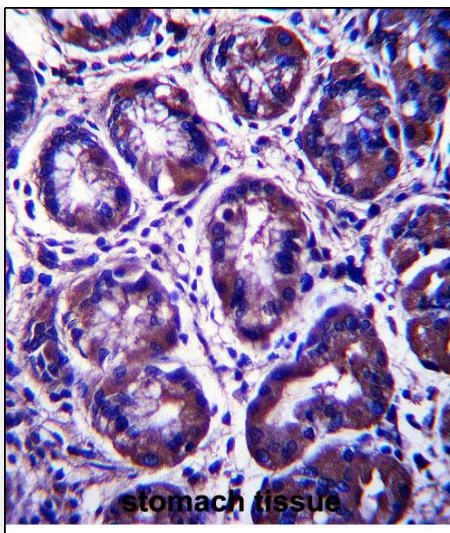
Provided below are standard protocols that you may find useful for product applications.

- [Western Blot](#)
- [Blocking Peptides](#)
- [Dot Blot](#)
- [Immunohistochemistry](#)
- [Immunofluorescence](#)
- [Immunoprecipitation](#)
- [Flow Cytometry](#)
- [Cell Culture](#)

RIBC2 Antibody (N-term) - Images



RIBC2 Antibody (N-term) (Cat. #AP13580a) western blot analysis in WiDr cell line lysates (35ug/lane). This demonstrates the RIBC2 antibody detected the RIBC2 protein (arrow).



RIBC2 Antibody (N-term) (Cat. #AP13580a) immunohistochemistry analysis in formalin fixed and paraffin embedded human stomach tissue followed by peroxidase conjugation of the secondary antibody and DAB staining. This data demonstrates the use of RIBC2 Antibody (N-term) for immunohistochemistry. Clinical relevance has not been evaluated.

RIBC2 Antibody (N-term) - Background

The function of this protein remains unknown.