

CORO2A Antibody (Center)
Affinity Purified Rabbit Polyclonal Antibody (Pab)
Catalog # AP13589C**Specification**

CORO2A Antibody (Center) - Product Information

Application	WB,E
Primary Accession	O92828
Other Accession	NP_438171.1 , NP_003380.3
Reactivity	Human
Host	Rabbit
Clonality	Polyclonal
Isotype	Rabbit IgG
Calculated MW	59763
Antigen Region	185-213

CORO2A Antibody (Center) - Additional Information**Gene ID** 7464**Other Names**

Coronin-2A, IR10, WD repeat-containing protein 2, CORO2A, IR10, WDR2

Target/Specificity

This CORO2A antibody is generated from rabbits immunized with a KLH conjugated synthetic peptide between 185-213 amino acids from the Central region of human CORO2A.

Dilution

WB~~1:1000

Format

Purified polyclonal antibody supplied in PBS with 0.09% (W/V) sodium azide. This antibody is purified through a protein A column, followed by peptide affinity purification.

Storage

Maintain refrigerated at 2-8°C for up to 2 weeks. For long term storage store at -20°C in small aliquots to prevent freeze-thaw cycles.

Precautions

CORO2A Antibody (Center) is for research use only and not for use in diagnostic or therapeutic procedures.

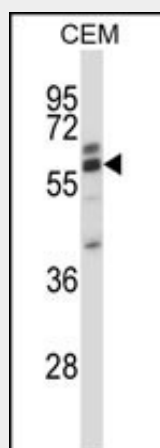
CORO2A Antibody (Center) - Protein Information**Name** CORO2A**Synonyms** IR10, WDR2

CORO2A Antibody (Center) - Protocols

Provided below are standard protocols that you may find useful for product applications.

- [Western Blot](#)
- [Blocking Peptides](#)
- [Dot Blot](#)
- [Immunohistochemistry](#)
- [Immunofluorescence](#)
- [Immunoprecipitation](#)
- [Flow Cytometry](#)
- [Cell Culture](#)

CORO2A Antibody (Center) - Images



CORO2A Antibody (Center) (Cat. #AP13589c) western blot analysis in CEM cell line lysates (35ug/lane). This demonstrates the CORO2A antibody detected the CORO2A protein (arrow).

CORO2A Antibody (Center) - Background

This gene encodes a member of the WD repeat protein family. WD repeats are minimally conserved regions of approximately 40 amino acids typically bracketed by gly-his and trp-aspartate (GH-WD), which may facilitate formation of heterotrimeric or multiprotein complexes. Members of this family are involved in a variety of cellular processes, including cell cycle progression, signal transduction, apoptosis, and gene regulation. This protein contains 5 WD repeats, and has a structural similarity with actin-binding proteins: the D. discoideum coronin and the human p53 protein, suggesting that this protein may also be an actin-binding protein that regulates cell motility. Alternative splicing of this gene generates 2 transcript variants.

CORO2A Antibody (Center) - References

Jin, Y., et al. Nat. Genet. 42(7):576-578(2010)
Marshall, T.W., et al. J. Cell. Sci. 122 (PT 17), 3061-3069 (2009) :
Oh, J.H., et al. Mamm. Genome 16(12):942-954(2005)
Yoon, H.G., et al. Mol. Cell 12(3):723-734(2003)
Yoon, H.G., et al. EMBO J. 22(6):1336-1346(2003)