

**OR4C16 Antibody (C-term)**  
**Affinity Purified Rabbit Polyclonal Antibody (Pab)**  
**Catalog # AP13620b**

**Specification**

---

**OR4C16 Antibody (C-term) - Product Information**

Application	WB,E
Primary Accession	<a href="#">Q8NGL9</a>
Other Accession	<a href="#">NP_001004701.2</a>
Reactivity	Human
Host	Rabbit
Clonality	Polyclonal
Isotype	Rabbit IgG
Calculated MW	34991
Antigen Region	282-310

**OR4C16 Antibody (C-term) - Additional Information**

**Gene ID** 219428

**Other Names**

Olfactory receptor 4C16, Olfactory receptor OR11-135, OR4C16

**Target/Specificity**

This OR4C16 antibody is generated from rabbits immunized with a KLH conjugated synthetic peptide between 282-310 amino acids from the C-terminal region of human OR4C16.

**Dilution**

WB~~1:1000

**Format**

Purified polyclonal antibody supplied in PBS with 0.09% (W/V) sodium azide. This antibody is purified through a protein A column, followed by peptide affinity purification.

**Storage**

Maintain refrigerated at 2-8°C for up to 2 weeks. For long term storage store at -20°C in small aliquots to prevent freeze-thaw cycles.

**Precautions**

OR4C16 Antibody (C-term) is for research use only and not for use in diagnostic or therapeutic procedures.

**OR4C16 Antibody (C-term) - Protein Information**

**Name** OR4C16

**Function** Odorant receptor.

### Cellular Location

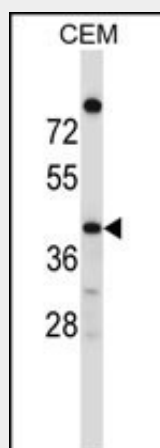
Cell membrane; Multi-pass membrane protein.

### OR4C16 Antibody (C-term) - Protocols

Provided below are standard protocols that you may find useful for product applications.

- [Western Blot](#)
- [Blocking Peptides](#)
- [Dot Blot](#)
- [Immunohistochemistry](#)
- [Immunofluorescence](#)
- [Immunoprecipitation](#)
- [Flow Cytometry](#)
- [Cell Culture](#)

### OR4C16 Antibody (C-term) - Images



OR4C16 Antibody (C-term) (Cat. #AP13620b) western blot analysis in CEM cell line lysates (35ug/lane). This demonstrates the OR4C16 antibody detected the OR4C16 protein (arrow).

### OR4C16 Antibody (C-term) - Background

Olfactory receptors interact with odorant molecules in the nose, to initiate a neuronal response that triggers the perception of a smell. The olfactory receptor proteins are members of a large family of G-protein-coupled receptors (GPCR) arising from single coding-exon genes. Olfactory receptors share a 7-transmembrane domain structure with many neurotransmitter and hormone receptors and are responsible for the recognition and G protein-mediated transduction of odorant signals. The olfactory receptor gene family is the largest in the genome. The nomenclature assigned to the olfactory receptor genes and proteins for this organism is independent of other organisms.

### OR4C16 Antibody (C-term) - References

Taylor, T.D., et al. Nature 440(7083):497-500(2006)  
Malnic, B., et al. Proc. Natl. Acad. Sci. U.S.A. 101(8):2584-2589(2004)