

**ABHD4 Antibody (Center)**  
**Affinity Purified Rabbit Polyclonal Antibody (Pab)**  
**Catalog # AP13670c****Specification**

---

**ABHD4 Antibody (Center) - Product Information**

Application	WB, IHC-P,E
Primary Accession	<a href="#">Q8TB40</a>
Other Accession	<a href="#">Q5EA59</a> , <a href="#">NP_071343.2</a>
Reactivity	Mouse
Predicted	Bovine
Host	Rabbit
Clonality	Polyclonal
Isotype	Rabbit IgG
Calculated MW	38794
Antigen Region	98-127

**ABHD4 Antibody (Center) - Additional Information****Gene ID** 63874**Other Names**Abhydrolase domain-containing protein 4, 311-, Alpha/beta-hydrolase 4,  
Lyso-N-acylphosphatidylethanolamine lipase, ABHD4**Target/Specificity**

This ABHD4 antibody is generated from rabbits immunized with a KLH conjugated synthetic peptide between 98-127 amino acids from the Central region of human ABHD4.

**Dilution**WB~~1:1000  
IHC-P~~1:10~50**Format**

Purified polyclonal antibody supplied in PBS with 0.09% (W/V) sodium azide. This antibody is purified through a protein A column, followed by peptide affinity purification.

**Storage**

Maintain refrigerated at 2-8°C for up to 2 weeks. For long term storage store at -20°C in small aliquots to prevent freeze-thaw cycles.

**Precautions**

ABHD4 Antibody (Center) is for research use only and not for use in diagnostic or therapeutic procedures.

**ABHD4 Antibody (Center) - Protein Information****Name** ABHD4 ([HGNC:20154](#))

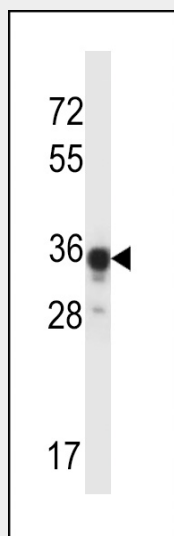
**Function** Lysophospholipase selective for N-acyl phosphatidylethanolamine (NAPE). Contributes to the biosynthesis of N- acyl ethanolamines, including the endocannabinoid anandamide by hydrolyzing the sn-1 and sn-2 acyl chains from N-acyl phosphatidylethanolamine (NAPE) generating glycerophospho-N-acyl ethanolamine (GP-NAE), an intermediate for N-acyl ethanolamine biosynthesis. Hydrolyzes substrates bearing saturated, monounsaturated, polyunsaturated N-acyl chains. Shows no significant activity towards other lysophospholipids, including lysophosphatidylcholine, lysophosphatidylethanolamine and lysophosphatidylserine.

### ABHD4 Antibody (Center) - Protocols

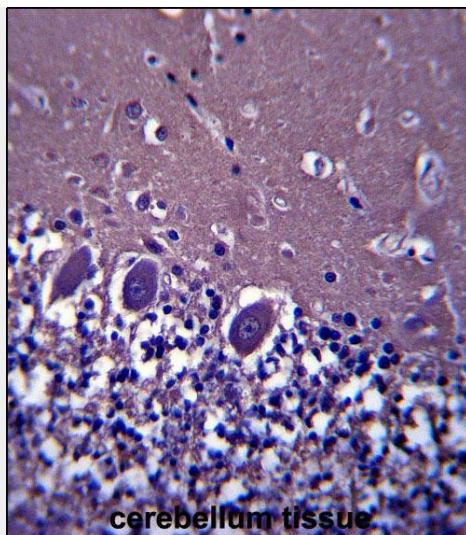
Provided below are standard protocols that you may find useful for product applications.

- [Western Blot](#)
- [Blocking Peptides](#)
- [Dot Blot](#)
- [Immunohistochemistry](#)
- [Immunofluorescence](#)
- [Immunoprecipitation](#)
- [Flow Cytometry](#)
- [Cell Culture](#)

### ABHD4 Antibody (Center) - Images



ABHD4 Antibody (Center) (Cat. #AP13670c) western blot analysis in mouse kidney tissue lysates (35ug/lane). This demonstrates the ABHD4 antibody detected the ABHD4 protein (arrow).



ABHD4 Antibody (Center) (Cat. #AP13670c) immunohistochemistry analysis in formalin fixed and paraffin embedded human cerebellum tissue followed by peroxidase conjugation of the secondary antibody and DAB staining. This data demonstrates the use of ABHD4 Antibody (Center) for immunohistochemistry. Clinical relevance has not been evaluated.

#### **ABHD4 Antibody (Center) - Background**

Lysophospholipase selective for N-acyl phosphatidylethanolamine (NAPE). Contributes to the biosynthesis of N-acyl ethanolamines, including the endocannabinoid anandamide by hydrolyzing the sn-1 and sn-2 acyl chains from N-acyl phosphatidylethanolamine (NAPE) generating glycerophospho-N-acyl ethanolamine (GP-NAE), an intermediate for N-acyl ethanolamine biosynthesis. Hydrolyzes substrates bearing saturated, monounsaturated, polyunsaturated N-acyl chains. Shows no significant activity towards other lysophospholipids, including lysophosphatidylcholine, lysophosphatidylethanolamine and lysophosphatidylserine (By similarity).

#### **ABHD4 Antibody (Center) - References**

Simon, G.M., et al. J. Biol. Chem. 281(36):26465-26472(2006)