

**HYAL4 Antibody (Center)**  
**Affinity Purified Rabbit Polyclonal Antibody (Pab)**  
**Catalog # AP13683C**

**Specification**

---

**HYAL4 Antibody (Center) - Product Information**

Application	WB, IHC-P-Leica,E
Primary Accession	<a href="#">Q2M3T9</a>
Other Accession	<a href="#">NP_036401.2</a>
Reactivity	Human, Mouse, Rat
Host	Rabbit
Clonality	Polyclonal
Isotype	Rabbit IgG
Antigen Region	143-172

**HYAL4 Antibody (Center) - Additional Information**

**Gene ID** 23553

**Other Names**

Hyaluronidase-4, Hyal-4, Chondroitin sulfate endo-beta-N-acetylgalactosaminidase, Chondroitin sulfate hydrolase, CSHY, Hyaluronoglucosaminidase-4, HYAL4

**Target/Specificity**

This HYAL4 antibody is generated from rabbits immunized with a KLH conjugated synthetic peptide between 143-172 amino acids from the Central region of human HYAL4.

**Dilution**

WB~~1:1000  
IHC-P-Leica~~1:500

**Format**

Purified polyclonal antibody supplied in PBS with 0.09% (W/V) sodium azide. This antibody is purified through a protein A column, followed by peptide affinity purification.

**Storage**

Maintain refrigerated at 2-8°C for up to 2 weeks. For long term storage store at -20°C in small aliquots to prevent freeze-thaw cycles.

**Precautions**

HYAL4 Antibody (Center) is for research use only and not for use in diagnostic or therapeutic procedures.

**HYAL4 Antibody (Center) - Protein Information**

**Name** HYAL4

**Function** Endo-hyaluronidase that degrades hyaluronan to smaller oligosaccharide fragments.

Has also chondroitin sulfate hydrolase activity, The best substrate being the galactosaminidic linkage in the sequence of a trisulfated tetrasaccharide.

**Cellular Location**

Membrane; Multi-pass membrane protein

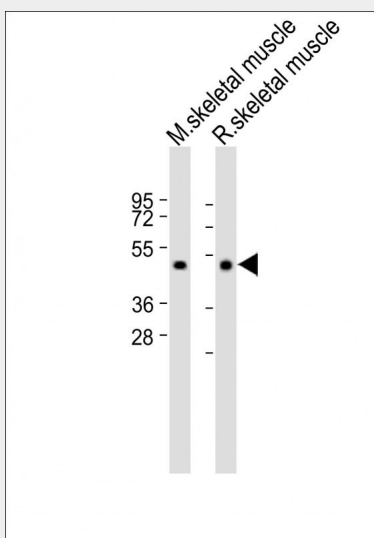
**Tissue Location**

Detected in placenta and skeletal muscle.

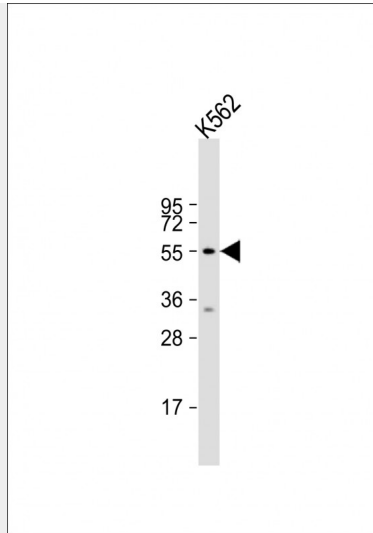
**HYAL4 Antibody (Center) - Protocols**

Provided below are standard protocols that you may find useful for product applications.

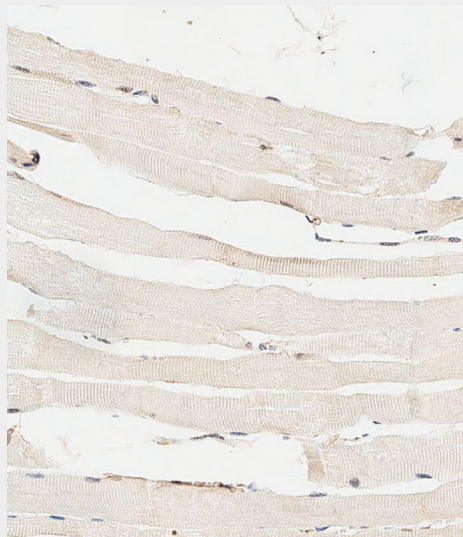
- [Western Blot](#)
- [Blocking Peptides](#)
- [Dot Blot](#)
- [Immunohistochemistry](#)
- [Immunofluorescence](#)
- [Immunoprecipitation](#)
- [Flow Cytometry](#)
- [Cell Culture](#)

**HYAL4 Antibody (Center) - Images**

All lanes : Anti-HYAL4 Antibody (Center) at 1:2000 dilution Lane 1: Mouse skeletal muscle lysate  
Lane 2: Rat skeletal muscle lysate Lysates/proteins at 20 µg per lane. Secondary Goat Anti-Rabbit IgG, (H+L), Peroxidase conjugated at 1/10000 dilution. Predicted band size : 54 kDa  
Blocking/Dilution buffer: 5% NFDM/TBST.



Anti-HYAL4 Antibody (Center) at 1:1000 dilution + K562 whole cell lysate Lysates/proteins at 20 µg per lane. Secondary Goat Anti-Rabbit IgG, (H+L), Peroxidase conjugated at 1/10000 dilution. Predicted band size : 54 kDa Blocking/Dilution buffer: 5% NFDM/TBST.



Immunohistochemical analysis of paraffin-embedded Human skeletal muscle tissue using AP13683C performed on the Leica® BOND RXm. Tissue was fixed with formaldehyde at room temperature, antigen retrieval was by heat mediation with a EDTA buffer (pH9.0). Samples were incubated with primary antibody(1:500) for 1 hours at room temperature. A undiluted biotinylated CRF Anti-Polyvalent HRP Polymer antibody was used as the secondary antibody.

#### **HYAL4 Antibody (Center) - Background**

This gene encodes a protein which is similar in structure to hyaluronidases. Hyaluronidases intracellularly degrade hyaluronan, one of the major glycosaminoglycans of the extracellular matrix. Hyaluronan is thought to be involved in cell proliferation, migration and differentiation. However, this protein has not yet been shown to have hyaluronidase activity. [provided by RefSeq].

#### **HYAL4 Antibody (Center) - References**

Rose, J.E., et al. Mol. Med. 16 (7-8), 247-253 (2010) :  
Kaneiwa, T., et al. Glycobiology 20(3):300-309(2010)  
Fischer-Szafarz, B., et al. J. Biochem. Biophys. Methods 45(2):103-116(2000)  
Csoka, A.B., et al. Genomics 60(3):356-361(1999)