

P4HA3 Antibody (Center)
Affinity Purified Rabbit Polyclonal Antibody (Pab)
Catalog # AP13685c

Specification

P4HA3 Antibody (Center) - Product Information

Application	WB,E
Primary Accession	Q7Z4N8
Other Accession	NP_878907.1
Reactivity	Human
Host	Rabbit
Clonality	Polyclonal
Isotype	Rabbit IgG
Calculated MW	61126
Antigen Region	274-303

P4HA3 Antibody (Center) - Additional Information

Gene ID 283208

Other Names

Prolyl 4-hydroxylase subunit alpha-3, 4-PH alpha-3, Procollagen-proline,
2-oxoglutarate-4-dioxygenase subunit alpha-3, P4HA3

Target/Specificity

This P4HA3 antibody is generated from rabbits immunized with a KLH conjugated synthetic peptide between 274-303 amino acids from the Central region of human P4HA3.

Dilution

WB~~1:1000

Format

Purified polyclonal antibody supplied in PBS with 0.09% (W/V) sodium azide. This antibody is purified through a protein A column, followed by peptide affinity purification.

Storage

Maintain refrigerated at 2-8°C for up to 2 weeks. For long term storage store at -20°C in small aliquots to prevent freeze-thaw cycles.

Precautions

P4HA3 Antibody (Center) is for research use only and not for use in diagnostic or therapeutic procedures.

P4HA3 Antibody (Center) - Protein Information

Name P4HA3

Function Catalyzes the post-translational formation of 4- hydroxyproline in -Xaa-Pro-Gly-

sequences in collagens and other proteins.

Cellular Location

Endoplasmic reticulum lumen.

Tissue Location

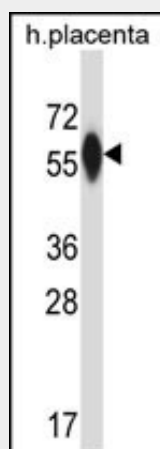
Highly expressed in placenta, liver and fetal skin. Weakly expressed in fetal epiphyseal cartilage, fetal liver, fibroblast, lung and skeletal muscle. Expressed also in fibrous cap of carotid atherosclerotic lesions.

P4HA3 Antibody (Center) - Protocols

Provided below are standard protocols that you may find useful for product applications.

- [Western Blot](#)
- [Blocking Peptides](#)
- [Dot Blot](#)
- [Immunohistochemistry](#)
- [Immunofluorescence](#)
- [Immunoprecipitation](#)
- [Flow Cytometry](#)
- [Cell Culture](#)

P4HA3 Antibody (Center) - Images



P4HA3 Antibody (Center) (Cat. #AP13685c) western blot analysis in human placenta tissue lysates (35ug/lane). This demonstrates the P4HA3 antibody detected the P4HA3 protein (arrow).

P4HA3 Antibody (Center) - Background

This gene encodes a component of prolyl 4-hydroxylase, a key enzyme in collagen synthesis composed of two identical alpha subunits and two beta subunits. The encoded protein is one of several different types of alpha subunits and provides the major part of the catalytic site of the active enzyme. In collagen and related proteins, prolyl 4-hydroxylase catalyzes the formation of 4-hydroxyproline that is essential to the proper three-dimensional folding of newly synthesized procollagen chains. Alternatively spliced transcript variants have been observed, but their full-length nature has not been determined.

P4HA3 Antibody (Center) - References

Rose, J. Phd, et al. Mol. Med. (2010) In press :
Koivunen, P., et al. J. Biol. Chem. 281(39):28712-28720(2006)
Kukkola, L., et al. J. Biol. Chem. 278(48):47685-47693(2003)
Van Den Diepstraten, C., et al. Circulation 108(5):508-511(2003)