

PTH Antibody (Center)
Affinity Purified Rabbit Polyclonal Antibody (Pab)
Catalog # AP13695c

Specification

PTH Antibody (Center) - Product Information

Application	WB,E
Primary Accession	P01270
Other Accession	Q9XT35 , NP_000306.1
Reactivity	Human
Predicted	Monkey
Host	Rabbit
Clonality	Polyclonal
Isotype	Rabbit IgG
Calculated MW	12861
Antigen Region	59-88

PTH Antibody (Center) - Additional Information

Gene ID 5741

Other Names

Parathyroid hormone, PTH, Parathormone, Parathyrin, PTH

Target/Specificity

This PTH antibody is generated from rabbits immunized with a KLH conjugated synthetic peptide between 59-88 amino acids from the Central region of human PTH.

Dilution

WB~~1:1000

Format

Purified polyclonal antibody supplied in PBS with 0.09% (W/V) sodium azide. This antibody is purified through a protein A column, followed by peptide affinity purification.

Storage

Maintain refrigerated at 2-8°C for up to 2 weeks. For long term storage store at -20°C in small aliquots to prevent freeze-thaw cycles.

Precautions

PTH Antibody (Center) is for research use only and not for use in diagnostic or therapeutic procedures.

PTH Antibody (Center) - Protein Information

Name PTH

Function PTH elevates calcium level by dissolving the salts in bone and preventing their renal

excretion. Stimulates [1-14C]-2-deoxy-D- glucose (2DG) transport and glycogen synthesis in osteoblastic cells.

Cellular Location

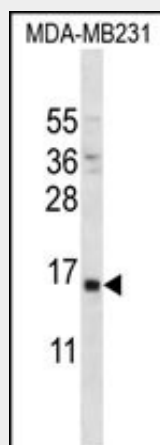
Secreted.

PTH Antibody (Center) - Protocols

Provided below are standard protocols that you may find useful for product applications.

- [Western Blot](#)
- [Blocking Peptides](#)
- [Dot Blot](#)
- [Immunohistochemistry](#)
- [Immunofluorescence](#)
- [Immunoprecipitation](#)
- [Flow Cytometry](#)
- [Cell Culture](#)

PTH Antibody (Center) - Images



PTH Antibody (Center) (Cat. #AP13695c) western blot analysis in MDA-MB231 cell line lysates (35ug/lane). This demonstrates the PTH antibody detected the PTH protein (arrow).

PTH Antibody (Center) - Background

The protein encoded by this gene is a hormone secreted by parathyroid cells. This hormone elevates blood Ca^{2+} level by dissolving the salts in bone and preventing their renal excretion. Defects in this gene are a cause of familial isolated hypoparathyroidism (FIH).

PTH Antibody (Center) - References

Giroux, S., et al. Bone 47(5):975-981(2010)
Bailey, S.D., et al. Diabetes Care 33(10):2250-2253(2010)
Xu, M., et al. Bone 47(2):341-352(2010)
Gardham, C., et al. Clin J Am Soc Nephrol 5(7):1261-1267(2010)
Tawfeek, H., et al. PLoS ONE 5 (8), E12290 (2010) :