

KRT6B Antibody (Center)
Affinity Purified Rabbit Polyclonal Antibody (Pab)
Catalog # AP13732c**Specification**

KRT6B Antibody (Center) - Product Information

| | |
|-------------------|-----------------------------|
| Application | WB, IHC-P,E |
| Primary Accession | P04259 |
| Other Accession | NP_005546.2 |
| Reactivity | Human |
| Host | Rabbit |
| Clonality | Polyclonal |
| Isotype | Rabbit IgG |
| Calculated MW | 60067 |
| Antigen Region | 207-236 |

KRT6B Antibody (Center) - Additional Information**Gene ID** 3854**Other Names**

Keratin, type II cytoskeletal 6B, Cytokeratin-6B, CK-6B, Keratin-6B, K6B, Type-II keratin Kb10, KRT6B, K6B, KRTL1

Target/Specificity

This KRT6B antibody is generated from rabbits immunized with a KLH conjugated synthetic peptide between 207-236 amino acids from the Central region of human KRT6B.

Dilution

WB~~1:1000

IHC-P~~1:10~50

Format

Purified polyclonal antibody supplied in PBS with 0.09% (W/V) sodium azide. This antibody is purified through a protein A column, followed by peptide affinity purification.

Storage

Maintain refrigerated at 2-8°C for up to 2 weeks. For long term storage store at -20°C in small aliquots to prevent freeze-thaw cycles.

Precautions

KRT6B Antibody (Center) is for research use only and not for use in diagnostic or therapeutic procedures.

KRT6B Antibody (Center) - Protein Information**Name** KRT6B

Synonyms K6B, KRTL1

Tissue Location

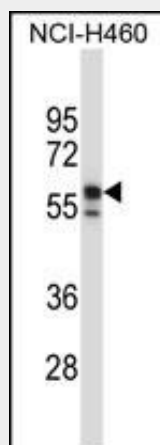
Constitutively expressed in distinct types of epithelia such as those in oral mucosa, esophagus, papillae of tongue and hair follicle outer root sheath

KRT6B Antibody (Center) - Protocols

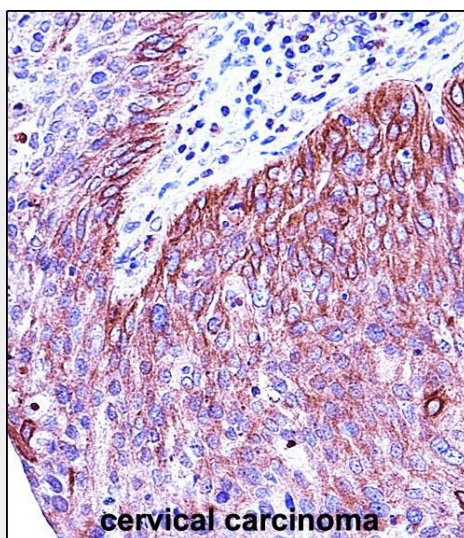
Provided below are standard protocols that you may find useful for product applications.

- [Western Blot](#)
- [Blocking Peptides](#)
- [Dot Blot](#)
- [Immunohistochemistry](#)
- [Immunofluorescence](#)
- [Immunoprecipitation](#)
- [Flow Cytometry](#)
- [Cell Culture](#)

KRT6B Antibody (Center) - Images



KRT6B Antibody (Center) (Cat. #AP13732c) western blot analysis in NCI-H460 cell line lysates (35ug/lane). This demonstrates the KRT6B antibody detected the KRT6B protein (arrow).



KRT6B Antibody (Center) (Cat. #AP13732c) immunohistochemistry analysis in formalin fixed and paraffin embedded human cervical carcinoma followed by peroxidase conjugation of the secondary antibody and DAB staining. This data demonstrates the use of KRT6B Antibody (Center) for immunohistochemistry. Clinical relevance has not been evaluated.

KRT6B Antibody (Center) - Background

The protein encoded by this gene is a member of the keratin gene family. The type II cytokeratins consist of basic or neutral proteins which are arranged in pairs of heterotypic keratin chains coexpressed during differentiation of simple and stratified epithelial tissues. As many as six of this type II cytokeratin (KRT6) have been identified; the multiplicity of the genes is attributed to successive gene duplication events. The genes are expressed with family members KRT16 and/or KRT17 in the filiform papillae of the tongue, the stratified epithelial lining of oral mucosa and esophagus, the outer root sheath of hair follicles, and the glandular epithelia. Mutations in these genes have been associated with pachyonychia congenita. The type II cytokeratins are clustered in a region of chromosome 12q12-q13. [provided by RefSeq].

KRT6B Antibody (Center) - References

Millar, E.K., et al. J. Clin. Oncol. 27(28):4701-4708(2009)
Schweizer, J., et al. J. Cell Biol. 174(2):169-174(2006)
Takahashi, K., et al. J. Biol. Chem. 270(31):18581-18592(1995)
Rasmussen, H.H., et al. Electrophoresis 13(12):960-969(1992)
Suo, Z., et al. Anticancer Res. 12 (6B), 2025-2031 (1992) :