

**MMP19 Antibody (N-term)**  
**Affinity Purified Rabbit Polyclonal Antibody (Pab)**  
**Catalog # AP13759a****Specification**

---

**MMP19 Antibody (N-term) - Product Information**

Application	WB,E
Primary Accession	<a href="#">O99542</a>
Other Accession	<a href="#">NP_002420.1</a>
Reactivity	Human
Host	Rabbit
Clonality	Polyclonal
Isotype	Rabbit IgG
Calculated MW	57357
Antigen Region	55-84

**MMP19 Antibody (N-term) - Additional Information****Gene ID** 4327**Other Names**

Matrix metalloproteinase-19, MMP-19, 3424-, Matrix metalloproteinase RASI, Matrix metalloproteinase-18, MMP-18, MMP19, MMP18, RASI

**Target/Specificity**

This MMP19 antibody is generated from rabbits immunized with a KLH conjugated synthetic peptide between 55-84 amino acids from the N-terminal region of human MMP19.

**Dilution**

WB~~1:1000

**Format**

Purified polyclonal antibody supplied in PBS with 0.09% (W/V) sodium azide. This antibody is purified through a protein A column, followed by peptide affinity purification.

**Storage**

Maintain refrigerated at 2-8°C for up to 2 weeks. For long term storage store at -20°C in small aliquots to prevent freeze-thaw cycles.

**Precautions**

MMP19 Antibody (N-term) is for research use only and not for use in diagnostic or therapeutic procedures.

**MMP19 Antibody (N-term) - Protein Information****Name** MMP19**Synonyms** MMP18, RASI

**Function** Endopeptidase that degrades various components of the extracellular matrix, such as aggrecan and cartilage oligomeric matrix protein (comp), during development, haemostasis and pathological conditions (arthritic disease). May also play a role in neovascularization or angiogenesis. Hydrolyzes collagen type IV, laminin, nidogen, nascin-C isoform, fibronectin, and type I gelatin.

**Cellular Location**

Secreted, extracellular space, extracellular matrix

**Tissue Location**

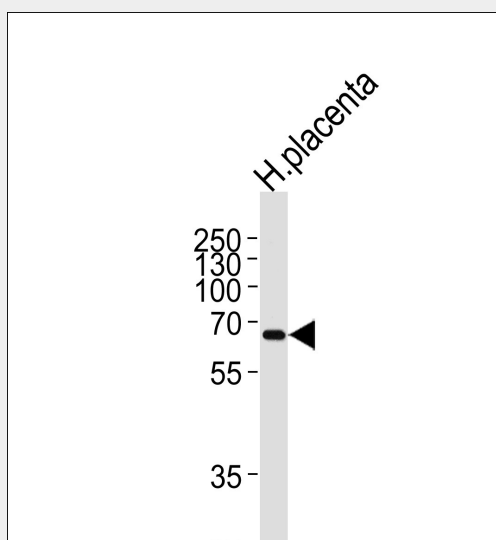
Expressed in mammary gland, placenta, lung, pancreas, ovary, small intestine, spleen, thymus, prostate, testis colon, heart and blood vessel walls. Not detected in brain and peripheral blood leukocytes. Also expressed in the synovial fluid of normal and rheumatoid patients (PubMed:8920941)

**MMP19 Antibody (N-term) - Protocols**

Provided below are standard protocols that you may find useful for product applications.

- [Western Blot](#)
- [Blocking Peptides](#)
- [Dot Blot](#)
- [Immunohistochemistry](#)
- [Immunofluorescence](#)
- [Immunoprecipitation](#)
- [Flow Cytometry](#)
- [Cell Culture](#)

**MMP19 Antibody (N-term) - Images**



Western blot analysis of lysate from human placenta tissue lysate, using MMP19 Antibody (N-term)(Cat. #AP13759a). AP13759a was diluted at 1:1000 at each lane. A goat anti-rabbit IgG H&L(HRP) at 1:5000 dilution was used as the secondary antibody. Lysate at 35ug per lane.

**MMP19 Antibody (N-term) - Background**

Proteins of the matrix metalloproteinase (MMP) family are

involved in the breakdown of extracellular matrix in normal physiological processes, such as embryonic development, reproduction, and tissue remodeling, as well as in disease processes, such as arthritis and metastasis. Most MMP's are secreted as inactive proproteins which are activated when cleaved by extracellular proteinases. This protein is expressed in human epidermis and it has a role in cellular proliferation as well as migration and adhesion to type I collagen. Multiple transcript variants encoding distinct isoforms have been identified for this gene.

#### **MMP19 Antibody (N-term) - References**

Romero, R., et al. Am. J. Obstet. Gynecol. 203 (4), 361 (2010) :  
Bailey, S.D., et al. Diabetes Care 33(10):2250-2253(2010)  
Romero, R., et al. Am. J. Obstet. Gynecol. 202 (5), 431 (2010) :  
Muller, M., et al. Mod. Pathol. 23(4):511-521(2010)  
Lettau, I., et al. J. Neuropathol. Exp. Neurol. 69(3):215-223(2010)