

Mouse Acvr1 Antibody (Center)
Affinity Purified Rabbit Polyclonal Antibody (Pab)
Catalog # AP13796c**Specification**

Mouse Acvr1 Antibody (Center) - Product Information

Application	WB, IHC-P,E
Primary Accession	P37172
Other Accession	P80201 , Q04771 , Q28041 , NP_031420.2 , NP_001103675.1
Reactivity	Human, Mouse
Predicted	Bovine, Rat
Host	Rabbit
Clonality	Polyclonal
Isotype	Rabbit IgG
Calculated MW	57226
Antigen Region	137-166

Mouse Acvr1 Antibody (Center) - Additional Information**Gene ID** 11477**Other Names**

Activin receptor type-1, Activin receptor type I, ACTR-I, Serine/threonine-protein kinase receptor R1, SKR1, TGF-B superfamily receptor type I, TSR-I, TSK-7L, Acvr1, Acvrlk2, Tgfb1

Target/Specificity

This Mouse Acvr1 antibody is generated from rabbits immunized with a KLH conjugated synthetic peptide between 137-166 amino acids from the Central region of mouse Acvr1.

Dilution

WB~~1:1000
IHC-P~~1:10~50

Format

Purified polyclonal antibody supplied in PBS with 0.09% (W/V) sodium azide. This antibody is purified through a protein A column, followed by peptide affinity purification.

Storage

Maintain refrigerated at 2-8°C for up to 2 weeks. For long term storage store at -20°C in small aliquots to prevent freeze-thaw cycles.

Precautions

Mouse Acvr1 Antibody (Center) is for research use only and not for use in diagnostic or therapeutic procedures.

Mouse Acvr1 Antibody (Center) - Protein Information

Name Acvr1

Synonyms Acvr1k2, Tgfb1

Function Bone morphogenetic protein (BMP) type I receptor that is involved in a wide variety of biological processes, including bone, heart, cartilage, nervous, and reproductive system development and regulation (PubMed:[10479450](#), PubMed:[15531373](#), PubMed:[21945937](#)). As a type I receptor, forms heterotetrameric receptor complexes with the type II receptors AMHR2, ACVR2A ors ACVR2B. Upon binding of ligands such as BMP7 or BMP9 to the heteromeric complexes, type II receptors transphosphorylate ACVR1 intracellular domain. In turn, ACVR1 kinase domain is activated and subsequently phosphorylates SMAD1/5/8 proteins that transduce the signal. In addition to its role in mediating BMP pathway-specific signaling, suppresses TGFbeta/activin pathway signaling by interfering with the binding of activin to its type II receptor. Besides canonical SMAD signaling, can activate non-canonical pathways such as p38 mitogen-activated protein kinases/MAPKs (PubMed:[25413979](#), PubMed:[10479450](#), PubMed:[15531373](#), PubMed:[21945937](#)) (By similarity). May promote the expression of HAMP, potentially via its interaction with BMP6 (PubMed:[31800957](#)).

Cellular Location

Membrane; Single-pass type I membrane protein.

Tissue Location

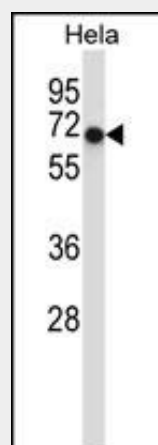
Highly expressed in bone during developmental stages (PubMed:21945937). Expressed in normal parenchymal cells, endothelial cells, fibroblasts and tumor-derived epithelial cells

Mouse Acvr1 Antibody (Center) - Protocols

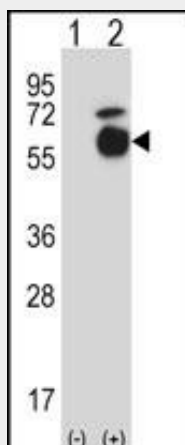
Provided below are standard protocols that you may find useful for product applications.

- [Western Blot](#)
- [Blocking Peptides](#)
- [Dot Blot](#)
- [Immunohistochemistry](#)
- [Immunofluorescence](#)
- [Immunoprecipitation](#)
- [Flow Cytometry](#)
- [Cell Culture](#)

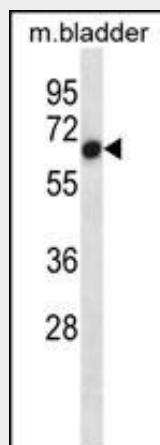
Mouse Acvr1 Antibody (Center) - Images



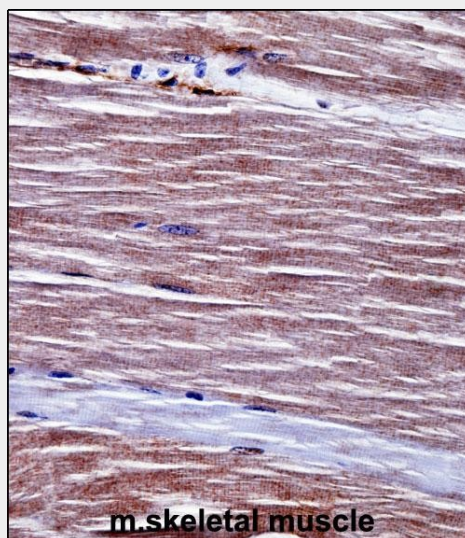
Mouse Acvr1 Antibody (Center) (Cat. #AP13796c) western blot analysis in Hela cell line lysates (35ug/lane). This demonstrates the Acvr1 antibody detected the Acvr1 protein (arrow).



Western blot analysis of Acvr1 (arrow) using rabbit polyclonal Mouse Acvr1 Antibody (Center) (Cat. #AP13796c). 293 cell lysates (2 ug/lane) either nontransfected (Lane 1) or transiently transfected (Lane 2) with the Acvr1 gene.



Mouse Acvr1 Antibody (Center) (Cat. #AP13796c) western blot analysis in mouse bladder tissue lysates (35ug/lane). This demonstrates the Acvr1 antibody detected the Acvr1 protein (arrow).



Mouse Acvr1 Antibody (Center) (AP13796c) immunohistochemistry analysis in formalin fixed and

paraffin embedded mouse skeletal muscle followed by peroxidase conjugation of the secondary antibody and DAB staining. This data demonstrates the use of Mouse Acvr1 Antibody (Center) for immunohistochemistry. Clinical relevance has not been evaluated.

Mouse Acvr1 Antibody (Center) - Background

On ligand binding, forms a receptor complex consisting of two type II and two type I transmembrane serine/threonine kinases. Type II receptors phosphorylate and activate type I receptors which autophosphorylate, then bind and activate SMAD transcriptional regulators. Receptor for activin. May be involved in left-right pattern formation during embryogenesis.

Mouse Acvr1 Antibody (Center) - References

Luo, J., et al. J. Biol. Chem. 285(38):29588-29598(2010)
Song, G.A., et al. J. Biol. Chem. 285(29):22542-22553(2010)
Shimogori, T., et al. Nat. Neurosci. 13(6):767-775(2010)
Suzuki, Y., et al. J. Cell. Sci. 123 (PT 10), 1684-1692 (2010) :
Caronia, G., et al. J. Neurosci. 30(18):6291-6301(2010)