

MGMT Antibody (N-term)
Affinity Purified Rabbit Polyclonal Antibody (Pab)
Catalog # AP13848a**Specification**

MGMT Antibody (N-term) - Product Information

Application	IF, WB,E
Primary Accession	P16455
Reactivity	Human
Host	Rabbit
Clonality	Polyclonal
Isotype	Rabbit IgG
Calculated MW	21646
Antigen Region	1-30

MGMT Antibody (N-term) - Additional Information**Gene ID** 4255**Other Names**

Methylated-DNA--protein-cysteine methyltransferase, 6-O-methylguanine-DNA methyltransferase, MGMT, O-6-methylguanine-DNA-alkyltransferase, MGMT

Target/Specificity

This MGMT antibody is generated from rabbits immunized with a KLH conjugated synthetic peptide between 1-30 amino acids from the N-terminal region of human MGMT.

Dilution

IF~~1:10~50

WB~~1:1000

Format

Purified polyclonal antibody supplied in PBS with 0.09% (W/V) sodium azide. This antibody is purified through a protein A column, followed by peptide affinity purification.

Storage

Maintain refrigerated at 2-8°C for up to 2 weeks. For long term storage store at -20°C in small aliquots to prevent freeze-thaw cycles.

Precautions

MGMT Antibody (N-term) is for research use only and not for use in diagnostic or therapeutic procedures.

MGMT Antibody (N-term) - Protein Information**Name** MGMT**Function** Involved in the cellular defense against the biological effects of O6-methylguanine

(O6-MeG) and O4-methylthymine (O4-MeT) in DNA. Repairs the methylated nucleobase in DNA by stoichiometrically transferring the methyl group to a cysteine residue in the enzyme. This is a suicide reaction: the enzyme is irreversibly inactivated.

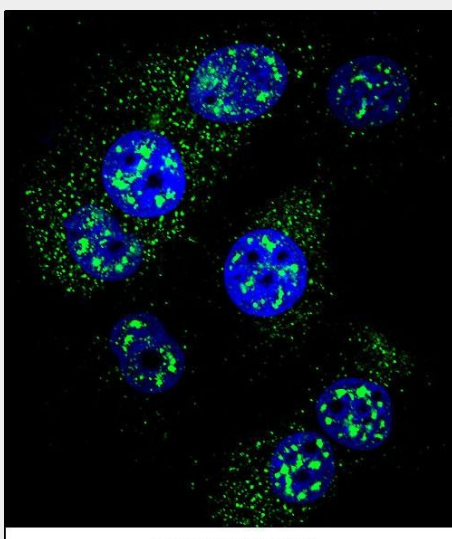
Cellular Location

Nucleus.

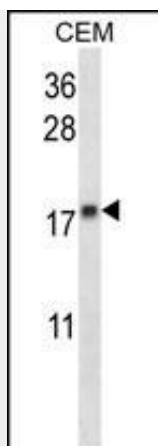
MGMT Antibody (N-term) - Protocols

Provided below are standard protocols that you may find useful for product applications.

- [Western Blot](#)
- [Blocking Peptides](#)
- [Dot Blot](#)
- [Immunohistochemistry](#)
- [Immunofluorescence](#)
- [Immunoprecipitation](#)
- [Flow Cytometry](#)
- [Cell Culture](#)

MGMT Antibody (N-term) - Images

Confocal immunofluorescent analysis of MGMT Antibody (N-term)(Cat#AP13848a) with MCF-7 cell followed by Alexa Fluor 488-conjugated goat anti-rabbit IgG (green). DAPI was used to stain the cell nuclear (blue).



MGMT Antibody (N-term) (Cat. #AP13848a) western blot analysis in CEM cell line lysates (35ug/lane). This demonstrates the MGMT antibody detected the MGMT protein (arrow).

MGMT Antibody (N-term) - Background

MGMT is involved in the cellular defense against the biological effects of O6-methylguanine (O6-MeG) in DNA. Repairs alkylated guanine in DNA by stoichiometrically transferring the alkyl group at the O-6 position to a cysteine residue in the enzyme. This is a suicide reaction: the enzyme is irreversibly inactivated.