

OCLN Antibody (C-term)
Affinity Purified Rabbit Polyclonal Antibody (Pab)
Catalog # AP13901b**Specification**

OCLN Antibody (C-term) - Product Information

Application	WB,E
Primary Accession	Q16625
Other Accession	Q61146 , NP_002529.1
Reactivity	Human
Predicted	Mouse
Host	Rabbit
Clonality	Polyclonal
Isotype	Rabbit IgG
Calculated MW	59144
Antigen Region	446-474

OCLN Antibody (C-term) - Additional Information**Gene ID** 100506658**Other Names**

Occludin, OCLN

Target/Specificity

This OCLN antibody is generated from rabbits immunized with a KLH conjugated synthetic peptide between 446-474 amino acids from the C-terminal region of human OCLN.

Dilution

WB~~1:1000

Format

Purified polyclonal antibody supplied in PBS with 0.09% (W/V) sodium azide. This antibody is purified through a protein A column, followed by peptide affinity purification.

Storage

Maintain refrigerated at 2-8°C for up to 2 weeks. For long term storage store at -20°C in small aliquots to prevent freeze-thaw cycles.

Precautions

OCLN Antibody (C-term) is for research use only and not for use in diagnostic or therapeutic procedures.

OCLN Antibody (C-term) - Protein Information**Name** OCLN**Function** May play a role in the formation and regulation of the tight junction (TJ) paracellular

permeability barrier. It is able to induce adhesion when expressed in cells lacking tight junctions.

Cellular Location

Cell membrane; Multi-pass membrane protein. Cell junction, tight junction

Tissue Location

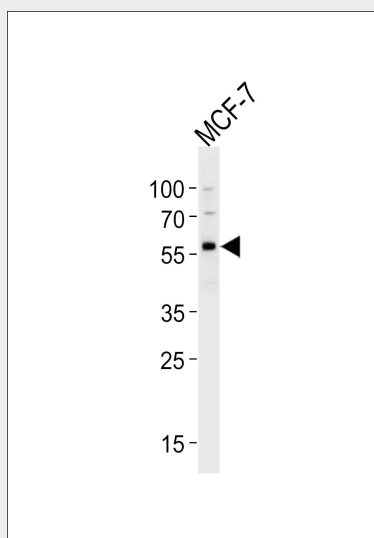
Localized at tight junctions of both epithelial and endothelial cells. Highly expressed in kidney. Not detected in testis

OCN Antibody (C-term) - Protocols

Provided below are standard protocols that you may find useful for product applications.

- [Western Blot](#)
- [Blocking Peptides](#)
- [Dot Blot](#)
- [Immunohistochemistry](#)
- [Immunofluorescence](#)
- [Immunoprecipitation](#)
- [Flow Cytometry](#)
- [Cell Culture](#)

OCN Antibody (C-term) - Images



Western blot analysis of lysate from MCF-7 cell line, using OCN Antibody (C-term)(Cat. #AP13901b). AP13901b was diluted at 1:1000 at each lane. A goat anti-rabbit IgG H&L(HRP) at 1:5000 dilution was used as the secondary antibody. Lysate at 35ug per lane.

OCN Antibody (C-term) - Background

This gene encodes an integral membrane protein which is located at tight junctions. This protein may be involved in the formation and maintenance of the tight junction. The possibility of several alternatively spliced products has been suggested but the full nature of these products has not been described. [provided by RefSeq].

OCLN Antibody (C-term) - References

Liu, S., et al. Virology 407(1):160-170(2010)
Michta, M.L., et al. J. Virol. 84(22):11696-11708(2010)
O'Driscoll, M.C., et al. Am. J. Hum. Genet. 87(3):354-364(2010)
Van Itallie, C.M., et al. J. Cell. Sci. 123 (PT 16), 2844-2852 (2010) :
Raikwar, N.S., et al. Am. J. Physiol. Renal Physiol. 299 (2), F436-F444 (2010) :