

Mouse Nek8 Antibody (C-term)
Affinity Purified Rabbit Polyclonal Antibody (Pab)
Catalog # AP13927B

Specification

Mouse Nek8 Antibody (C-term) - Product Information

Application	WB,E
Primary Accession	O91ZR4
Other Accession	NP_543125.1
Reactivity	Human, Mouse
Host	Rabbit
Clonality	Polyclonal
Isotype	Rabbit IgG
Calculated MW	75265
Antigen Region	519-547

Mouse Nek8 Antibody (C-term) - Additional Information

Gene ID 140859

Other Names

Serine/threonine-protein kinase Nek8, Never in mitosis A-related kinase 8, NimA-related protein kinase 8, Nek8, Jck

Target/Specificity

This Mouse Nek8 antibody is generated from rabbits immunized with a KLH conjugated synthetic peptide between 519-547 amino acids from the C-terminal region of mouse Nek8.

Dilution

WB~~1:1000

Format

Purified polyclonal antibody supplied in PBS with 0.09% (W/V) sodium azide. This antibody is purified through a protein A column, followed by peptide affinity purification.

Storage

Maintain refrigerated at 2-8°C for up to 2 weeks. For long term storage store at -20°C in small aliquots to prevent freeze-thaw cycles.

Precautions

Mouse Nek8 Antibody (C-term) is for research use only and not for use in diagnostic or therapeutic procedures.

Mouse Nek8 Antibody (C-term) - Protein Information

Name Nek8

Synonyms Jck

Function Required for renal tubular integrity. May regulate local cytoskeletal structure in kidney tubule epithelial cells. May regulate ciliary biogenesis through targeting of proteins to the cilia. Plays a role in organogenesis and is involved in the regulation of the Hippo signaling pathway.

Cellular Location

Cytoplasm. Cytoplasm, cytoskeleton. Cell projection, cilium. Cytoplasm, cytoskeleton, microtubule organizing center, centrosome {ECO:0000250|UniProtKB:Q86SG6}. Note=Predominantly cytoplasmic Localizes to the proximal region of the primary cilium and is not observed in dividing cells.

Tissue Location

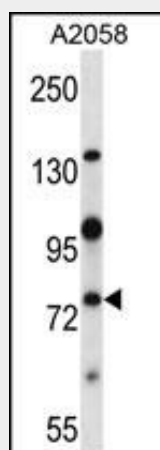
Kidney, liver, and testis.

Mouse Nek8 Antibody (C-term) - Protocols

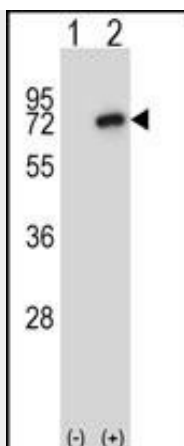
Provided below are standard protocols that you may find useful for product applications.

- [Western Blot](#)
- [Blocking Peptides](#)
- [Dot Blot](#)
- [Immunohistochemistry](#)
- [Immunofluorescence](#)
- [Immunoprecipitation](#)
- [Flow Cytometry](#)
- [Cell Culture](#)

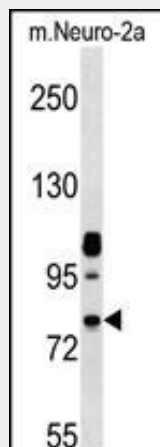
Mouse Nek8 Antibody (C-term) - Images



Mouse Nek8 Antibody (C-term) (Cat. #AP13927b) western blot analysis in A2058 cell line lysates (35ug/lane). This demonstrates the Nek8 antibody detected the Nek8 protein (arrow).



Western blot analysis of Nek8 (arrow) using rabbit polyclonal Mouse Nek8 Antibody (C-term) (Cat. #AP13927b). 293 cell lysates (2 ug/lane) either nontransfected (Lane 1) or transiently transfected (Lane 2) with the Nek8 gene.



Mouse Nek8 Antibody (C-term) (Cat. #AP13927b) western blot analysis in mouse Neuro-2a cell line lysates (35ug/lane). This demonstrates the Nek8 antibody detected the Nek8 protein (arrow).

Mouse Nek8 Antibody (C-term) - Background

This gene encodes a NIMA-related kinase. Members of this serine/threonine protein kinase family are structurally-related to NIMA (never in mitosis, gene A) which controls mitotic signaling in *Aspergillus nidulans*.

Mouse Nek8 Antibody (C-term) - References

- Hellman, N.E., et al. Proc. Natl. Acad. Sci. U.S.A. 107(43):18499-18504(2010)
- Ahmadie, R., et al. J. Nutr. 140(8):1438-1444(2010)
- Natoli, T.A., et al. Nat. Med. 16(7):788-792(2010)
- Shiba, D., et al. Cytoskeleton (Hoboken) 67(2):112-119(2010)
- Sohara, E., et al. J. Am. Soc. Nephrol. 19(3):469-476(2008)