

**Mouse Pan3 Antibody (C-term)**  
**Affinity Purified Rabbit Polyclonal Antibody (Pab)**  
**Catalog # AP13932b****Specification**

---

**Mouse Pan3 Antibody (C-term) - Product Information**

Application	WB,E
Primary Accession	<a href="#">Q640Q5</a>
Other Accession	<a href="#">Q58A45</a> , <a href="#">NP_082567.3</a>
Reactivity	Human, Mouse
Host	Rabbit
Clonality	Polyclonal
Isotype	Rabbit IgG
Calculated MW	95451
Antigen Region	727-755

**Mouse Pan3 Antibody (C-term) - Additional Information****Gene ID** 72587**Other Names**

PAB-dependent poly(A)-specific ribonuclease subunit PAN3  
{ECO:0000255|HAMAP-Rule:MF\_03181}, PAB1P-dependent poly(A)-nuclease  
{ECO:0000255|HAMAP-Rule:MF\_03181}, PAN deadenylation complex subunit 3  
{ECO:0000255|HAMAP-Rule:MF\_03181}, Pan3

**Target/Specificity**

This Mouse Pan3 antibody is generated from rabbits immunized with a KLH conjugated synthetic peptide between 727-755 amino acids from the C-terminal region of mouse Pan3.

**Dilution**

WB~~1:1000

**Format**

Purified polyclonal antibody supplied in PBS with 0.09% (W/V) sodium azide. This antibody is purified through a protein A column, followed by peptide affinity purification.

**Storage**

Maintain refrigerated at 2-8°C for up to 2 weeks. For long term storage store at -20°C in small aliquots to prevent freeze-thaw cycles.

**Precautions**

Mouse Pan3 Antibody (C-term) is for research use only and not for use in diagnostic or therapeutic procedures.

**Mouse Pan3 Antibody (C-term) - Protein Information****Name** Pan3 {ECO:0000255|HAMAP-Rule:MF\_03181}

**Function** Regulatory subunit of the poly(A)-nuclease (PAN) deadenylation complex, one of two cytoplasmic mRNA deadenylases involved in general and miRNA-mediated mRNA turnover. PAN specifically shortens poly(A) tails of RNA and the activity is stimulated by poly(A)-binding protein (PABP). PAN deadenylation is followed by rapid degradation of the shortened mRNA tails by the CCR4-NOT complex. Deadenylated mRNAs are then degraded by two alternative mechanisms, namely exosome-mediated 3'-5' exonucleolytic degradation, or deadenylation-dependent mRNA decapping and subsequent 5'-3' exonucleolytic degradation by XRN1. PAN3 acts as a regulator for PAN activity, recruiting the catalytic subunit PAN2 to mRNA via its interaction with RNA and PABP, and to miRNA targets via its interaction with GW182 family proteins.

#### Cellular Location

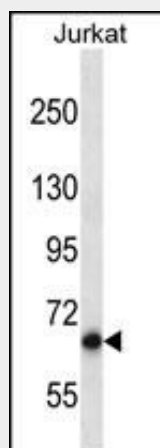
Cytoplasm, P-body {ECO:0000255|HAMAP- Rule:MF\_03181, ECO:0000269|PubMed:18625844}  
[Isoform 3]: Cytoplasm {ECO:0000250|UniProtKB:Q58A45}

#### Mouse Pan3 Antibody (C-term) - Protocols

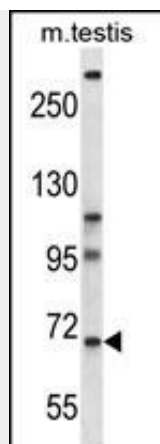
Provided below are standard protocols that you may find useful for product applications.

- [Western Blot](#)
- [Blocking Peptides](#)
- [Dot Blot](#)
- [Immunohistochemistry](#)
- [Immunofluorescence](#)
- [Immunoprecipitation](#)
- [Flow Cytometry](#)
- [Cell Culture](#)

#### Mouse Pan3 Antibody (C-term) - Images



Mouse Pan3 Antibody (C-term) (Cat. #AP13932b) western blot analysis in Jurkat cell line lysates (35ug/lane). This demonstrates the Pan3 antibody detected the Pan3 protein (arrow).



Mouse Pan3 Antibody (C-term) (Cat. #AP13932b) western blot analysis in mouse testis tissue lysates (35ug/lane). This demonstrates the Pan3 antibody detected the Pan3 protein (arrow).

#### **Mouse Pan3 Antibody (C-term) - Background**

Functions in cytoplasmic mRNA decay. As part of the Pan nuclease complex, recruits polyadenylate-binding protein which in turn stimulates PAN2 nuclease activity (By similarity).

#### **Mouse Pan3 Antibody (C-term) - References**

- Zheng, D., et al. J. Cell Biol. 182(1):89-101(2008)
- Siddiqui, N., et al. J. Biol. Chem. 282(34):25067-25075(2007)
- Nishimura, M., et al. DNA Res. 11(5):315-323(2004)
- Zambrowicz, B.P., et al. Proc. Natl. Acad. Sci. U.S.A. 100(24):14109-14114(2003)
- Hansen, J., et al. Proc. Natl. Acad. Sci. U.S.A. 100(17):9918-9922(2003)