

MIST Antibody (Center)
Affinity Purified Rabbit Polyclonal Antibody (Pab)
Catalog # AP13943c**Specification**

MIST Antibody (Center) - Product Information

Application	WB,E
Primary Accession	Q7Z7G1
Other Accession	NP_443196.2
Reactivity	Human
Host	Rabbit
Clonality	Polyclonal
Isotype	Rabbit IgG
Calculated MW	49554
Antigen Region	281-308

MIST Antibody (Center) - Additional Information**Gene ID** 116449**Other Names**

Cytokine-dependent hematopoietic cell linker, Mast cell immunoreceptor signal transducer, CLNK, MIST

Target/Specificity

This MIST antibody is generated from rabbits immunized with a KLH conjugated synthetic peptide between 281-308 amino acids from the Central region of human MIST.

Dilution

WB~~1:1000

Format

Purified polyclonal antibody supplied in PBS with 0.09% (W/V) sodium azide. This antibody is purified through a protein A column, followed by peptide affinity purification.

Storage

Maintain refrigerated at 2-8°C for up to 2 weeks. For long term storage store at -20°C in small aliquots to prevent freeze-thaw cycles.

Precautions

MIST Antibody (Center) is for research use only and not for use in diagnostic or therapeutic procedures.

MIST Antibody (Center) - Protein Information**Name** CLNK**Synonyms** MIST

Function An adapter protein which plays a role in the regulation of immunoreceptor signaling, including PLC-gamma-mediated B-cell antigen receptor (BCR) signaling and FC-epsilon R1-mediated mast cell degranulation (By similarity). Together with FGR, it acts as a negative regulator of natural killer cell-activating receptors and inhibits interferon-gamma production (By similarity). Acts as a positive regulator of both T-cell receptor and natural killer T (NKT) cell receptor signaling in CD4-positive NKT cells (By similarity). Together with MAP4K1, it enhances CD3-triggered activation of T-cells and subsequent IL2 production (By similarity). May be involved in tumor necrosis factor induced cell death by promoting reactive oxidative species generation, and MLKL oligomerization, ultimately leading to necrosis (By similarity). Involved in phosphorylation of LAT (By similarity). May be involved in high affinity immunoglobulin epsilon receptor signaling in mast cells (By similarity).

Cellular Location

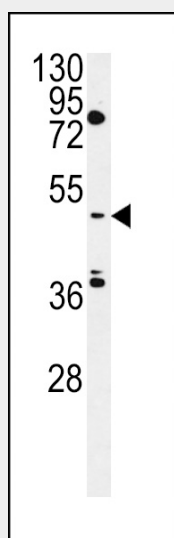
Cytoplasm.

MIST Antibody (Center) - Protocols

Provided below are standard protocols that you may find useful for product applications.

- [Western Blot](#)
- [Blocking Peptides](#)
- [Dot Blot](#)
- [Immunohistochemistry](#)
- [Immunofluorescence](#)
- [Immunoprecipitation](#)
- [Flow Cytometry](#)
- [Cell Culture](#)

MIST Antibody (Center) - Images



MIST Antibody (Center) (Cat. #AP13943c) western blot analysis in HepG2 cell line lysates (35ug/lane). This demonstrates the MIST antibody detected the MIST protein (arrow).

MIST Antibody (Center) - Background

MIST is a member of the SLP76 family of adaptors (see LCP2, MIM 601603; BLNK, MIM 604515). MIST plays a role in the

regulation of immunoreceptor signaling, including PLC-gamma (PLCG1; MIM 172420)-mediated B cell antigen receptor (BCR) signaling and FC-epsilon R1 (see FCER1A, MIM 147140)-mediated mast cell degranulation (Cao et al., 1999 [PubMed 10562326]; Goitsuka et al., 2000, 2001 [PubMed 10744659] [PubMed 11463797]).

MIST Antibody (Center) - References

Rose, J.E., et al. Mol. Med. 16 (7-8), 247-253 (2010) :
Cronin, S., et al. Eur. J. Hum. Genet. 17(2):213-218(2009)
Goitsuka, R., et al. J. Biol. Chem. 276(38):36043-36050(2001)
Goitsuka, R., et al. Int. Immunol. 12(4):573-580(2000)
Cao, M.Y., et al. J. Exp. Med. 190(10):1527-1534(1999)