

**PPAN Antibody (C-term)**  
**Affinity Purified Rabbit Polyclonal Antibody (Pab)**  
**Catalog # AP13950b**

**Specification**

---

**PPAN Antibody (C-term) - Product Information**

Application	WB,E
Primary Accession	<a href="#">O9NQ55</a>
Other Accession	<a href="#">NP_001035754.1</a> , <a href="#">NP_064615.3</a>
Reactivity	Human
Host	Rabbit
Clonality	Polyclonal
Isotype	Rabbit IgG
Calculated MW	53194
Antigen Region	422-450

**PPAN Antibody (C-term) - Additional Information**

**Gene ID** 56342;692312

**Other Names**

Suppressor of SWI4 1 homolog, Ssf-1, Brix domain-containing protein 3, Peter Pan homolog, PPAN, BXDC3, SSF1

**Target/Specificity**

This PPAN antibody is generated from rabbits immunized with a KLH conjugated synthetic peptide between 422-450 amino acids from the C-terminal region of human PPAN.

**Dilution**

WB~~1:1000

**Format**

Purified polyclonal antibody supplied in PBS with 0.09% (W/V) sodium azide. This antibody is purified through a protein A column, followed by peptide affinity purification.

**Storage**

Maintain refrigerated at 2-8°C for up to 2 weeks. For long term storage store at -20°C in small aliquots to prevent freeze-thaw cycles.

**Precautions**

PPAN Antibody (C-term) is for research use only and not for use in diagnostic or therapeutic procedures.

**PPAN Antibody (C-term) - Protein Information**

**Name** PPAN

**Synonyms** BXDC3, SSF1

**Function** May have a role in cell growth.

**Cellular Location**

Nucleus, nucleolus.

**Tissue Location**

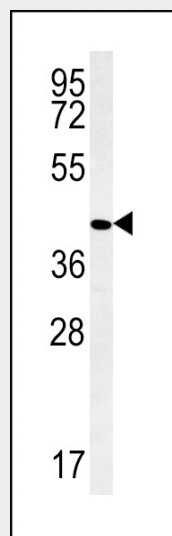
Widely expressed.

**PPAN Antibody (C-term) - Protocols**

Provided below are standard protocols that you may find useful for product applications.

- [Western Blot](#)
- [Blocking Peptides](#)
- [Dot Blot](#)
- [Immunohistochemistry](#)
- [Immunofluorescence](#)
- [Immunoprecipitation](#)
- [Flow Cytometry](#)
- [Cell Culture](#)

**PPAN Antibody (C-term) - Images**



PPAN Antibody (C-term) (Cat. #AP13950b) western blot analysis in ZR-75-1 cell line lysates (35ug/lane). This demonstrates the PPAN antibody detected the PPAN protein (arrow).

**PPAN Antibody (C-term) - Background**

The protein encoded by this gene is an evolutionarily conserved protein similar to yeast SSF1 as well as to the gene product of the Drosophila gene peter pan (ppan). SSF1 is known to be involved in the second step of mRNA splicing. Both SSF1 and ppan are essential for cell growth and proliferation. Exogenous expression of this gene was reported to reduce the anchorage-independent growth of some tumor cells. Read-through transcription of this gene with P2RY11/P2Y(11), an adjacent downstream gene that encodes an ATP receptor, has been found. These

read-through transcripts are ubiquitously present and up-regulated during granulocyte differentiation.

#### **PPAN Antibody (C-term) - References**

- Sugiyama, N., et al. Mol. Cell Proteomics 6(6):1103-1109(2007)  
Olsen, J.V., et al. Cell 127(3):635-648(2006)  
Nousiainen, M., et al. Proc. Natl. Acad. Sci. U.S.A. 103(14):5391-5396(2006)  
Beausoleil, S.A., et al. Proc. Natl. Acad. Sci. U.S.A. 101(33):12130-12135(2004)  
Duhant, X., et al. J. Immunol. 169(1):15-21(2002)