

C4orf18 Antibody (Center)
Affinity Purified Rabbit Polyclonal Antibody (Pab)
Catalog # AP13966c**Specification**

C4orf18 Antibody (Center) - Product Information

Application	WB,E
Primary Accession	Q6UWH4
Other Accession	NP_001121896.1 , NP_057697.2 , NP_001026870.2
Reactivity	Human
Host	Rabbit
Clonality	Polyclonal
Isotype	Rabbit IgG
Calculated MW	57552
Antigen Region	275-304

C4orf18 Antibody (Center) - Additional Information**Gene ID** 51313**Other Names**

Protein FAM198B, Expressed in nerve and epithelium during development, FAM198B, C4orf18, ENED

Target/Specificity

This C4orf18 antibody is generated from rabbits immunized with a KLH conjugated synthetic peptide between 275-304 amino acids from the Central region of human C4orf18.

Dilution

WB~~1:1000

Format

Purified polyclonal antibody supplied in PBS with 0.09% (W/V) sodium azide. This antibody is purified through a protein A column, followed by peptide affinity purification.

Storage

Maintain refrigerated at 2-8°C for up to 2 weeks. For long term storage store at -20°C in small aliquots to prevent freeze-thaw cycles.

Precautions

C4orf18 Antibody (Center) is for research use only and not for use in diagnostic or therapeutic procedures.

C4orf18 Antibody (Center) - Protein Information**Name** GASK1B ([HGNC:25312](#))

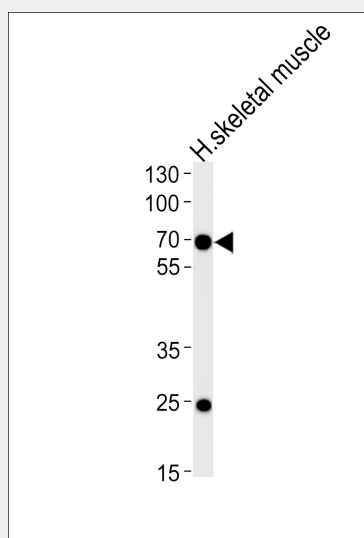
Cellular Location

Golgi apparatus membrane; Single-pass type II membrane protein

C4orf18 Antibody (Center) - Protocols

Provided below are standard protocols that you may find useful for product applications.

- [Western Blot](#)
- [Blocking Peptides](#)
- [Dot Blot](#)
- [Immunohistochemistry](#)
- [Immunofluorescence](#)
- [Immunoprecipitation](#)
- [Flow Cytometry](#)
- [Cell Culture](#)

C4orf18 Antibody (Center) - Images

Western blot analysis of lysate from human skeletal muscle tissue lysate, using C4orf18 Antibody (Center)(Cat. #AP13966c). AP13966c was diluted at 1:1000 at each lane. A goat anti-rabbit IgG H&L(HRP) at 1:5000 dilution was used as the secondary antibody. Lysate at 35ug per lane.

C4orf18 Antibody (Center) - Background

The exact function of this protein remains unknown.

C4orf18 Antibody (Center) - References

Clark, H.F., et al. Genome Res. 13(10):2265-2270(2003)
Simpson, J.C., et al. EMBO Rep. 1(3):287-292(2000)