

**SLC30A1 Antibody (C-term)**  
**Affinity Purified Rabbit Polyclonal Antibody (Pab)**  
**Catalog # AP13972b**

**Specification**

---

**SLC30A1 Antibody (C-term) - Product Information**

Application	WB,E
Primary Accession	<a href="#">Q9Y6M5</a>
Other Accession	<a href="#">Q4R6K2</a> , <a href="#">NP_067017.2</a>
Reactivity	Human
Predicted	Monkey
Host	Rabbit
Clonality	Polyclonal
Isotype	Rabbit IgG
Antigen Region	458-487

**SLC30A1 Antibody (C-term) - Additional Information**

**Gene ID** 7779

**Other Names**

Zinc transporter 1, ZnT-1, Solute carrier family 30 member 1, SLC30A1, ZNT1

**Target/Specificity**

This SLC30A1 antibody is generated from rabbits immunized with a KLH conjugated synthetic peptide between 458-487 amino acids from the C-terminal region of human SLC30A1.

**Dilution**

WB~~1:1000

**Format**

Purified polyclonal antibody supplied in PBS with 0.09% (W/V) sodium azide. This antibody is purified through a protein A column, followed by peptide affinity purification.

**Storage**

Maintain refrigerated at 2-8°C for up to 2 weeks. For long term storage store at -20°C in small aliquots to prevent freeze-thaw cycles.

**Precautions**

SLC30A1 Antibody (C-term) is for research use only and not for use in diagnostic or therapeutic procedures.

**SLC30A1 Antibody (C-term) - Protein Information**

**Name** SLC30A1 ([HGNC:11012](#))

**Function** Zinc ion:proton antiporter that could function at the plasma membrane mediating zinc efflux from cells against its electrochemical gradient protecting them from intracellular zinc

accumulation and toxicity (PubMed:[31471319](#)). Alternatively, could prevent the transport to the plasma membrane of CACNB2, the L-type calcium channels regulatory subunit, through a yet to be defined mechanism. By modulating the expression of these channels at the plasma membrane, could prevent calcium and zinc influx into cells. By the same mechanism, could also prevent L-type calcium channels-mediated heavy metal influx into cells (By similarity). In some cells, could also function as a zinc ion:proton antiporter mediating zinc entry into the lumen of cytoplasmic vesicles. In macrophages, can increase zinc ions concentration into the lumen of cytoplasmic vesicles containing engulfed bacteria and could help inactivate them (PubMed:[32441444](#)).

#### Cellular Location

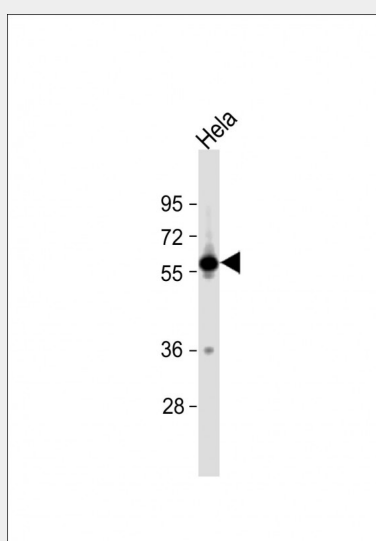
Cell membrane; Multi-pass membrane protein. Basolateral cell membrane; Multi-pass membrane protein. Cytoplasmic vesicle membrane; Multi-pass membrane protein. Note=Localization to the plasma membrane is regulated by cellular zinc status. Recruitment to the plasma membrane from an internal pool is stimulated by zinc while in absence of zinc the plasma membrane pool is endocytosed and degraded (PubMed:[31471319](#)). Localizes to the basolateral surface of enterocytes (By similarity). Localizes to zinc-containing intracellular vesicles in macrophages (PubMed:[32441444](#)). {ECO:0000250|UniProtKB:Q62720, ECO:0000269|PubMed:[31471319](#), ECO:0000269|PubMed:[32441444](#)}

#### SLC30A1 Antibody (C-term) - Protocols

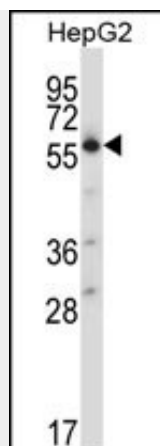
Provided below are standard protocols that you may find useful for product applications.

- [Western Blot](#)
- [Blocking Peptides](#)
- [Dot Blot](#)
- [Immunohistochemistry](#)
- [Immunofluorescence](#)
- [Immunoprecipitation](#)
- [Flow Cytometry](#)
- [Cell Culture](#)

#### SLC30A1 Antibody (C-term) - Images



Anti-SLC30A1 Antibody (C-term) at 1:1000 dilution + HeLa whole cell lysate Lysates/proteins at 20 µg per lane. Secondary Goat Anti-Rabbit IgG, (H+L), Peroxidase conjugated at 1/10000 dilution. Predicted band size : 55 kDa Blocking/Dilution buffer: 5% NFDM/TBST.



SLC30A1 Antibody (C-term) (Cat. #AP13972b) western blot analysis in HepG2 cell line lysates (35ug/lane). This demonstrates the SLC30A1 antibody detected the SLC30A1 protein (arrow).

#### **SLC30A1 Antibody (C-term) - Background**

SLC30A1 may be involved in zinc transport out of the cell.

#### **SLC30A1 Antibody (C-term) - References**

Urani, C., et al. Toxicol In Vitro 24(2):370-374(2010)  
Beharier, O., et al. Ann. N. Y. Acad. Sci. 1188, 87-95 (2010) :  
Guey, L.T., et al. Eur. Urol. 57(2):283-292(2010)  
Hosgood, H.D. III, et al. Respir Med 103(12):1866-1870(2009)  
Levy, S., et al. J. Biol. Chem. 284(47):32434-32443(2009)

#### **SLC30A1 Antibody (C-term) - Citations**

- [Zinc transporters ZnT3 and ZnT6 are downregulated in the spinal cords of patients with sporadic amyotrophic lateral sclerosis.](#)