

**PLSCR4 Antibody (Center)**  
**Affinity Purified Rabbit Polyclonal Antibody (Pab)**  
**Catalog # AP13974c****Specification**

---

**PLSCR4 Antibody (Center) - Product Information**

Application	WB, IHC-P,E
Primary Accession	<a href="#">O9NRQ2</a>
Other Accession	<a href="#">NP_065086.2</a> , <a href="#">NP_001121778.1</a> , <a href="#">NP_001170775.1</a>
Reactivity	Mouse
Host	Rabbit
Clonality	Polyclonal
Isotype	Rabbit IgG
Calculated MW	37005
Antigen Region	122-151

**PLSCR4 Antibody (Center) - Additional Information****Gene ID** 57088**Other Names**

Phospholipid scramblase 4, PL scramblase 4, Ca(2+)-dependent phospholipid scramblase 4, Cell growth-inhibiting gene 43 protein, TRA1, PLSCR4

**Target/Specificity**

This PLSCR4 antibody is generated from rabbits immunized with a KLH conjugated synthetic peptide between 122-151 amino acids from the Central region of human PLSCR4.

**Dilution**WB~~1:1000  
IHC-P~~1:10~50**Format**

Purified polyclonal antibody supplied in PBS with 0.09% (W/V) sodium azide. This antibody is purified through a protein A column, followed by peptide affinity purification.

**Storage**

Maintain refrigerated at 2-8°C for up to 2 weeks. For long term storage store at -20°C in small aliquots to prevent freeze-thaw cycles.

**Precautions**

PLSCR4 Antibody (Center) is for research use only and not for use in diagnostic or therapeutic procedures.

**PLSCR4 Antibody (Center) - Protein Information****Name** PLSCR4

**Function** May mediate accelerated ATP-independent bidirectional transbilayer migration of phospholipids upon binding calcium ions that results in a loss of phospholipid asymmetry in the plasma membrane. May play a central role in the initiation of fibrin clot formation, in the activation of mast cells and in the recognition of apoptotic and injured cells by the reticuloendothelial system.

**Cellular Location**

Membrane; Single-pass type II membrane protein

**Tissue Location**

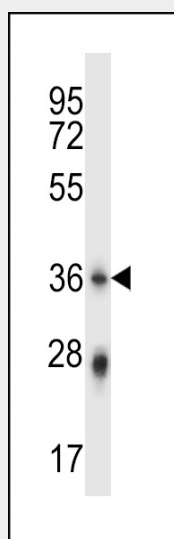
Expressed in heart, brain, placenta, lung, liver, kidney, pancreas, spleen, thymus, prostate, testis, uterus, small intestine and colon. Not detected in peripheral blood lymphocytes

**PLSCR4 Antibody (Center) - Protocols**

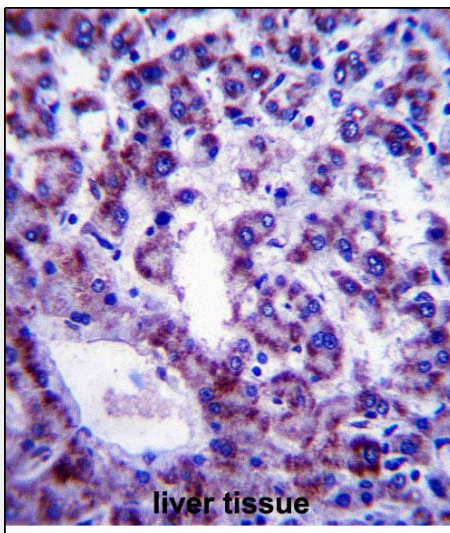
Provided below are standard protocols that you may find useful for product applications.

- [Western Blot](#)
- [Blocking Peptides](#)
- [Dot Blot](#)
- [Immunohistochemistry](#)
- [Immunofluorescence](#)
- [Immunoprecipitation](#)
- [Flow Cytometry](#)
- [Cell Culture](#)

**PLSCR4 Antibody (Center) - Images**



PLSCR4 Antibody (Center) (Cat. #AP13974c) western blot analysis in mouse stomach tissue lysates (35ug/lane). This demonstrates the PLSCR4 antibody detected the PLSCR4 protein (arrow).



PLSCR4 Antibody (Center) (Cat. #AP13974c) immunohistochemistry analysis in formalin fixed and paraffin embedded human liver tissue followed by peroxidase conjugation of the secondary antibody and DAB staining. This data demonstrates the use of PLSCR4 Antibody (Center) for immunohistochemistry. Clinical relevance has not been evaluated.

#### **PLSCR4 Antibody (Center) - Background**

PLSCR4 may mediate accelerated ATP-independent bidirectional transbilayer migration of phospholipids upon binding calcium ions that results in a loss of phospholipid asymmetry in the plasma membrane. May play a central role in the initiation of fibrin clot formation, in the activation of mast cells and in the recognition of apoptotic and injured cells by the reticuloendothelial system.

#### **PLSCR4 Antibody (Center) - References**

Rose, J.E., et al. Mol. Med. 16 (7-8), 247-253 (2010) :  
Sahu, S.K., et al. Biochim. Biophys. Acta 1790(10):1274-1281(2009)  
Py, B., et al. PLoS ONE 4 (3), E5006 (2009) :  
Shibata, H., et al. J. Biol. Chem. 283(15):9623-9632(2008)  
Wiedmer, T., et al. Biochim. Biophys. Acta 1467(1):244-253(2000)