

**FCGR2B Antibody (C-term)**  
**Affinity Purified Rabbit Polyclonal Antibody (Pab)**  
**Catalog # AP13987b****Specification**

---

**FCGR2B Antibody (C-term) - Product Information**

Application	WB,E
Primary Accession	<a href="#">P31994</a>
Other Accession	<a href="#">NP_003992.3</a> , <a href="#">NP_001002273.1</a> , <a href="#">NP_001177757.1</a> , <a href="#">NP_001002274.1</a>
Reactivity	Human
Host	Rabbit
Clonality	Polyclonal
Isotype	Rabbit IgG
Calculated MW	34044
Antigen Region	250-279

**FCGR2B Antibody (C-term) - Additional Information****Gene ID** 2213**Other Names**

Low affinity immunoglobulin gamma Fc region receptor II-b, IgG Fc receptor II-b, CDw32, Fc-gamma RII-b, Fc-gamma-RIIb, FcRII-b, CD32, FCGR2B, CD32, FCG2, IGFR2

**Target/Specificity**

This FCGR2B antibody is generated from rabbits immunized with a KLH conjugated synthetic peptide between 250-279 amino acids from the C-terminal region of human FCGR2B.

**Dilution**

WB~~1:1000

**Format**

Purified polyclonal antibody supplied in PBS with 0.09% (W/V) sodium azide. This antibody is purified through a protein A column, followed by peptide affinity purification.

**Storage**

Maintain refrigerated at 2-8°C for up to 2 weeks. For long term storage store at -20°C in small aliquots to prevent freeze-thaw cycles.

**Precautions**

FCGR2B Antibody (C-term) is for research use only and not for use in diagnostic or therapeutic procedures.

**FCGR2B Antibody (C-term) - Protein Information****Name** FCGR2B

**Synonyms** CD32, FCG2, IGFR2

**Function** Receptor for the Fc region of complexed or aggregated immunoglobulins gamma. Low affinity receptor. Involved in a variety of effector and regulatory functions such as phagocytosis of immune complexes and modulation of antibody production by B-cells. Binding to this receptor results in down-modulation of previous state of cell activation triggered via antigen receptors on B-cells (BCR), T-cells (TCR) or via another Fc receptor. Isoform IIB1 fails to mediate endocytosis or phagocytosis. Isoform IIB2 does not trigger phagocytosis.

**Cellular Location**

Cell membrane; Single-pass type I membrane protein

**Tissue Location**

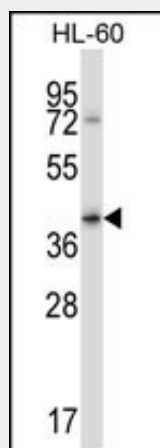
Is the most broadly distributed Fc-gamma-receptor. Expressed in monocyte, neutrophils, macrophages, basophils, eosinophils, Langerhans cells, B-cells, platelets cells and placenta (endothelial cells). Not detected in natural killer cells

**FCGR2B Antibody (C-term) - Protocols**

Provided below are standard protocols that you may find useful for product applications.

- [Western Blot](#)
- [Blocking Peptides](#)
- [Dot Blot](#)
- [Immunohistochemistry](#)
- [Immunofluorescence](#)
- [Immunoprecipitation](#)
- [Flow Cytometry](#)
- [Cell Culture](#)

**FCGR2B Antibody (C-term) - Images**



FCGR2B Antibody (C-term) (Cat. #AP13987b) western blot analysis in HL-60 cell line lysates (35ug/lane). This demonstrates the FCGR2B antibody detected the FCGR2B protein (arrow).

**FCGR2B Antibody (C-term) - Background**

The protein encoded by this gene is a low affinity receptor for the Fc region of immunoglobulin gamma complexes. The encoded protein is involved in the phagocytosis of immune complexes

and in the regulation of antibody production by B-cells. Variations in this gene may increase susceptibility to systemic lupus erythematosus (SLE). Several transcript variants encoding different isoforms have been found for this gene.

#### **FCGR2B Antibody (C-term) - References**

Prokopec, K.E., et al. Clin. Immunol. 137(3):322-329(2010)  
Silva, L.K., et al. Eur. J. Hum. Genet. 18(11):1221-1227(2010)  
Zhang, C.Y., et al. J. Biol. Chem. 285(44):34250-34258(2010)  
Niederer, H.A., et al. Hum. Mol. Genet. 19(16):3282-3294(2010)  
Guilabert, A., et al. J. Am. Acad. Dermatol. 63(1):161-163(2010)