

**CELA2A Antibody (C-term)**  
**Affinity Purified Rabbit Polyclonal Antibody (Pab)**  
**Catalog # AP14005b****Specification**

---

**CELA2A Antibody (C-term) - Product Information**

Application	WB,E
Primary Accession	<a href="#">P08217</a>
Other Accession	<a href="#">P08419</a> , <a href="#">NP_254275.1</a>
Reactivity	Human
Predicted	Pig
Host	Rabbit
Clonality	Polyclonal
Isotype	Rabbit IgG
Antigen Region	231-260

**CELA2A Antibody (C-term) - Additional Information****Gene ID** 63036**Other Names**

Chymotrypsin-like elastase family member 2A, Elastase-2A, CELA2A, ELA2A

**Target/Specificity**

This CELA2A antibody is generated from rabbits immunized with a KLH conjugated synthetic peptide between 231-260 amino acids from the C-terminal region of human CELA2A.

**Dilution**

WB~~1:1000

**Format**

Purified polyclonal antibody supplied in PBS with 0.09% (W/V) sodium azide. This antibody is purified through a protein A column, followed by peptide affinity purification.

**Storage**

Maintain refrigerated at 2-8°C for up to 2 weeks. For long term storage store at -20°C in small aliquots to prevent freeze-thaw cycles.

**Precautions**

CELA2A Antibody (C-term) is for research use only and not for use in diagnostic or therapeutic procedures.

**CELA2A Antibody (C-term) - Protein Information****Name** CELA2A ([HGNC:24609](#))**Synonyms** ELA2A

**Function** Elastase that enhances insulin signaling and might have a physiologic role in cellular glucose metabolism. Circulates in plasma and reduces platelet hyperactivation, triggers both insulin secretion and degradation, and increases insulin sensitivity.

**Cellular Location**  
Secreted.

**Tissue Location**

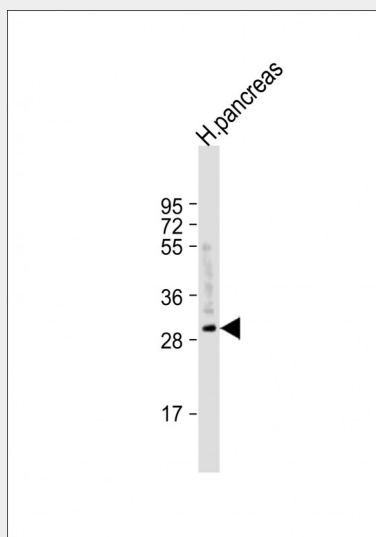
Expressed in pancreas. Not detected in keratinocytes (PubMed:10620133). Detected in exocrine secretions of the pancreas (at protein level). Also expressed in a small fraction of cells in pancreatic islets, adrenal cortex, intestinal glands and colonic lymphoid follicles (at protein level) (PubMed:31358993) Detected in plasma (PubMed:31358993).

**CELA2A Antibody (C-term) - Protocols**

Provided below are standard protocols that you may find useful for product applications.

- [Western Blot](#)
- [Blocking Peptides](#)
- [Dot Blot](#)
- [Immunohistochemistry](#)
- [Immunofluorescence](#)
- [Immunoprecipitation](#)
- [Flow Cytometry](#)
- [Cell Culture](#)

**CELA2A Antibody (C-term) - Images**



Anti-CELA2A Antibody (C-term) at 1:1000 dilution + human pancreas lysate Lysates/proteins at 20 µg per lane. Secondary Goat Anti-Rabbit IgG, (H+L), Peroxidase conjugated at 1/10000 dilution. Predicted band size : 29 kDa Blocking/Dilution buffer: 5% NFDM/TBST.

**CELA2A Antibody (C-term) - Background**

Elastases form a subfamily of serine proteases that hydrolyze many proteins in addition to elastin. Humans have six elastase genes which encode the structurally similar proteins

elastase 1, 2, 2A, 2B, 3A, and 3B. Like most of the human elastases, elastase 2A is secreted from the pancreas as a zymogen. In other species, elastase 2A has been shown to preferentially cleave proteins after leucine, methionine, and phenylalanine residues.

#### **CELA2A Antibody (C-term) - References**

Bailey, S.D., et al. Diabetes Care 33(10):2250-2253(2010)  
Talmud, P.J., et al. Am. J. Hum. Genet. 85(5):628-642(2009)  
Lamesch, P., et al. Genomics 89(3):307-315(2007)  
Lausen, J., et al. Oncogene 25(9):1349-1357(2006)  
Szepessy, E., et al. Pancreatology 6 (1-2), 117-122 (2006) :

#### **CELA2A Antibody (C-term) - Citations**

- [Endothelial-Mesenchymal Transition in Vascular Calcification of Ins2Akita/+ Mice.](#)
- [Serine Protease Activation Essential for Endothelial-Mesenchymal Transition in Vascular Calcification.](#)