

LRRC16B Antibody (C-term)
Affinity Purified Rabbit Polyclonal Antibody (Pab)
Catalog # AP14016B**Specification**

LRRC16B Antibody (C-term) - Product Information

Application	WB,E
Primary Accession	Q8ND23
Other Accession	NP_612369.3
Reactivity	Mouse
Host	Rabbit
Clonality	Polyclonal
Isotype	Rabbit IgG
Calculated MW	150230
Antigen Region	1344-1372

LRRC16B Antibody (C-term) - Additional Information**Gene ID** 90668**Other Names**

Leucine-rich repeat-containing protein 16B, LRRC16B, C14orf121

Target/Specificity

This LRRC16B antibody is generated from rabbits immunized with a KLH conjugated synthetic peptide between 1344-1372 amino acids from the C-terminal region of human LRRC16B.

Dilution

WB~~1:1000

Format

Purified polyclonal antibody supplied in PBS with 0.09% (W/V) sodium azide. This antibody is purified through a protein A column, followed by peptide affinity purification.

Storage

Maintain refrigerated at 2-8°C for up to 2 weeks. For long term storage store at -20°C in small aliquots to prevent freeze-thaw cycles.

Precautions

LRRC16B Antibody (C-term) is for research use only and not for use in diagnostic or therapeutic procedures.

LRRC16B Antibody (C-term) - Protein Information**Name** CARMIL3 ([HGNC:20272](#))**Synonyms** C14orf121, LRRC16B

Cellular Location

Cytoplasm. Cell membrane

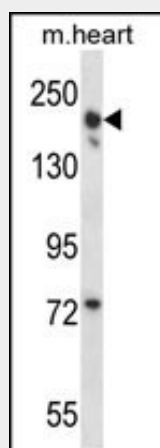
Tissue Location

Widely expressed, with much higher levels in fetal tissues than in adult ones. Up-regulated in certain cancer tissues

LRRC16B Antibody (C-term) - Protocols

Provided below are standard protocols that you may find useful for product applications.

- [Western Blot](#)
- [Blocking Peptides](#)
- [Dot Blot](#)
- [Immunohistochemistry](#)
- [Immunofluorescence](#)
- [Immunoprecipitation](#)
- [Flow Cytometry](#)
- [Cell Culture](#)

LRRC16B Antibody (C-term) - Images

LRRC16B Antibody (C-term) (Cat. #AP14016b) western blot analysis in mouse heart tissue lysates (35ug/lane). This demonstrates the LRRC16B antibody detected the LRRC16B protein (arrow).

LRRC16B Antibody (C-term) - Background

The exact function of this protein remains unknown.

LRRC16B Antibody (C-term) - References

Liang, Y., et al. Mol. Biol. Cell 20(24):5290-5305(2009)
Xie, H., et al. Genomics 83(4):572-576(2004)