

**CSTF3 Antibody (C-term)**  
**Affinity Purified Rabbit Polyclonal Antibody (Pab)**  
**Catalog # AP14056b****Specification**

---

**CSTF3 Antibody (C-term) - Product Information**

Application	WB,E
Primary Accession	<a href="#">Q12996</a>
Other Accession	<a href="#">Q99LI7</a> , <a href="#">NP_001317.1</a>
Reactivity	Human
Predicted	Mouse
Host	Rabbit
Clonality	Polyclonal
Isotype	Rabbit IgG
Calculated MW	82922
Antigen Region	556-585

**CSTF3 Antibody (C-term) - Additional Information****Gene ID** 1479**Other Names**

Cleavage stimulation factor subunit 3, CF-1 77 kDa subunit, Cleavage stimulation factor 77 kDa subunit, CSTF 77 kDa subunit, CstF-77, CSTF3

**Target/Specificity**

This CSTF3 antibody is generated from rabbits immunized with a KLH conjugated synthetic peptide between 556-585 amino acids from the C-terminal region of human CSTF3.

**Dilution**

WB~~1:1000

**Format**

Purified polyclonal antibody supplied in PBS with 0.09% (W/V) sodium azide. This antibody is purified through a protein A column, followed by peptide affinity purification.

**Storage**

Maintain refrigerated at 2-8°C for up to 2 weeks. For long term storage store at -20°C in small aliquots to prevent freeze-thaw cycles.

**Precautions**

CSTF3 Antibody (C-term) is for research use only and not for use in diagnostic or therapeutic procedures.

**CSTF3 Antibody (C-term) - Protein Information****Name** CSTF3

**Function** One of the multiple factors required for polyadenylation and 3'-end cleavage of mammalian pre-mRNAs.

**Cellular Location**

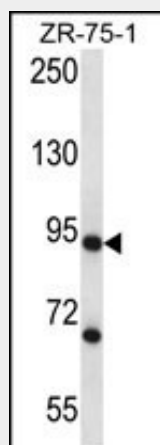
Nucleus.

**CSTF3 Antibody (C-term) - Protocols**

Provided below are standard protocols that you may find useful for product applications.

- [Western Blot](#)
- [Blocking Peptides](#)
- [Dot Blot](#)
- [Immunohistochemistry](#)
- [Immunofluorescence](#)
- [Immunoprecipitation](#)
- [Flow Cytometry](#)
- [Cell Culture](#)

**CSTF3 Antibody (C-term) - Images**



CSTF3 Antibody (C-term) (Cat. #AP14056b) western blot analysis in ZR-75-1 cell line lysates (35ug/lane). This demonstrates the CSTF3 antibody detected the CSTF3 protein (arrow).

**CSTF3 Antibody (C-term) - Background**

The protein encoded by this gene is one of three (including CSTF1 and CSTF2) cleavage stimulation factors that combine to form the cleavage stimulation factor complex (CSTF). This complex is involved in the polyadenylation and 3' end cleavage of pre-mRNAs. The encoded protein functions as a homodimer and interacts directly with both CSTF1 and CSTF2 in the CSTF complex. Alternative splicing results in multiple transcript variants encoding different isoforms.

**CSTF3 Antibody (C-term) - References**

Hockert, J.A., et al. J. Biol. Chem. 285(1):695-704(2010)  
Lamesch, P., et al. Genomics 89(3):307-315(2007)  
Ewing, R.M., et al. Mol. Syst. Biol. 3, 89 (2007) :

Olsen, J.V., et al. Cell 127(3):635-648(2006)  
Olsen, J.V., et al. Cell 127(3):635-648(2006)