

**AES Antibody (C-term)**  
**Affinity Purified Rabbit Polyclonal Antibody (Pab)**  
**Catalog # AP14115b****Specification**

---

**AES Antibody (C-term) - Product Information**

Application	WB,E
Primary Accession	<a href="#">Q08117</a>
Other Accession	<a href="#">NP_001121.2</a>
Reactivity	Human
Host	Rabbit
Clonality	Polyclonal
Isotype	Rabbit IgG
Calculated MW	21970
Antigen Region	156-184

**AES Antibody (C-term) - Additional Information****Gene ID** 166**Other Names**

Amino-terminal enhancer of split, Amino enhancer of split, Gp130-associated protein GAM, Grg-5, Groucho-related protein 5, Protein ESP1, Protein GRG, AES, GRG, GRG5

**Target/Specificity**

This AES antibody is generated from rabbits immunized with a KLH conjugated synthetic peptide between 156-184 amino acids from the C-terminal region of human AES.

**Dilution**

WB~~1:1000

**Format**

Purified polyclonal antibody supplied in PBS with 0.09% (W/V) sodium azide. This antibody is purified through a protein A column, followed by peptide affinity purification.

**Storage**

Maintain refrigerated at 2-8°C for up to 2 weeks. For long term storage store at -20°C in small aliquots to prevent freeze-thaw cycles.

**Precautions**

AES Antibody (C-term) is for research use only and not for use in diagnostic or therapeutic procedures.

**AES Antibody (C-term) - Protein Information****Name** TLE5 ([HGNC:307](#))**Synonyms** AES, GRG, GRG5

**Function** Transcriptional corepressor. Acts as a dominant repressor towards other family members. Inhibits NF-kappa-B-regulated gene expression. May be required for the initiation and maintenance of the differentiated state. Essential for the transcriptional repressor activity of SIX3 during retina and lens development.

**Cellular Location**

Nucleus.

**Tissue Location**

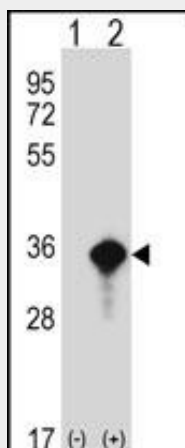
Found predominantly in muscle, heart and Placenta. In fetal tissues, abundantly expressed in the heart, lung, kidney, brain and liver

**AES Antibody (C-term) - Protocols**

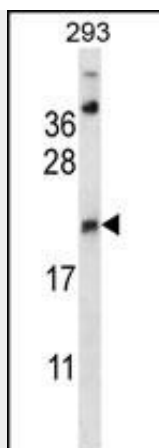
Provided below are standard protocols that you may find useful for product applications.

- [Western Blot](#)
- [Blocking Peptides](#)
- [Dot Blot](#)
- [Immunohistochemistry](#)
- [Immunofluorescence](#)
- [Immunoprecipitation](#)
- [Flow Cytometry](#)
- [Cell Culture](#)

**AES Antibody (C-term) - Images**



Western blot analysis of AES (arrow) using rabbit polyclonal AES Antibody (C-term) (Cat. #AP14115b). 293 cell lysates (2 ug/lane) either nontransfected (Lane 1) or transiently transfected (Lane 2) with the AES gene.



AES Antibody (C-term) (Cat. #AP14115b) western blot analysis in 293 cell line lysates (35ug/lane). This demonstrates the AES antibody detected the AES protein (arrow).

### **AES Antibody (C-term) - Background**

The protein encoded by this gene is similar in sequence to the amino terminus of Drosophila enhancer of split groucho, a protein involved in neurogenesis during embryonic development. The encoded protein, which belongs to the groucho/TLE family of proteins, can function as a homooligomer or as a heterooligomer with other family members to dominantly repress the expression of other family member genes. Three transcript variants encoding different isoforms have been found for this gene. [provided by RefSeq].

### **AES Antibody (C-term) - References**

Zhang, Y., et al. Biochem. J. 427(3):499-511(2010)  
Beagle, B., et al. PLoS ONE 5 (7), E11821 (2010) :  
Arce, L., et al. BMC Cancer 9, 159 (2009) :  
Zhang, X., et al. J. Neurosci. Res. 86(11):2423-2431(2008)  
Ewing, R.M., et al. Mol. Syst. Biol. 3, 89 (2007) :