

**FUBP1 Antibody (Center)**  
**Affinity Purified Rabbit Polyclonal Antibody (Pab)**  
**Catalog # AP14126c****Specification**

---

**FUBP1 Antibody (Center) - Product Information**

Application	IHC-P, WB,E
Primary Accession	<a href="#">Q96AE4</a>
Other Accession	<a href="#">Q32PX7</a> , <a href="#">Q91WJ8</a> , <a href="#">NP_003893.2</a>
Reactivity	Human, Mouse, Rat
Host	Rabbit
Clonality	Polyclonal
Isotype	Rabbit IgG
Calculated MW	67560
Antigen Region	240-268

**FUBP1 Antibody (Center) - Additional Information****Gene ID** 8880**Other Names**

Far upstream element-binding protein 1, FBP, FUSE-binding protein 1, DNA helicase V, hDH V, FUBP1

**Target/Specificity**

This FUBP1 antibody is generated from rabbits immunized with a KLH conjugated synthetic peptide between 240-268 amino acids from the Central region of human FUBP1.

**Dilution**IHC-P~~1~1000  
WB~~1:1000**Format**

Purified polyclonal antibody supplied in PBS with 0.09% (W/V) sodium azide. This antibody is purified through a protein A column, followed by peptide affinity purification.

**Storage**

Maintain refrigerated at 2-8°C for up to 2 weeks. For long term storage store at -20°C in small aliquots to prevent freeze-thaw cycles.

**Precautions**

FUBP1 Antibody (Center) is for research use only and not for use in diagnostic or therapeutic procedures.

**FUBP1 Antibody (Center) - Protein Information****Name** FUBP1

**Function** Regulates MYC expression by binding to a single-stranded far- upstream element (FUSE) upstream of the MYC promoter. May act both as activator and repressor of transcription.

**Cellular Location**

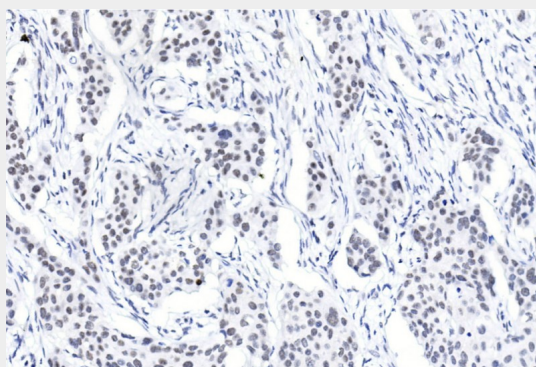
Nucleus.

**FUBP1 Antibody (Center) - Protocols**

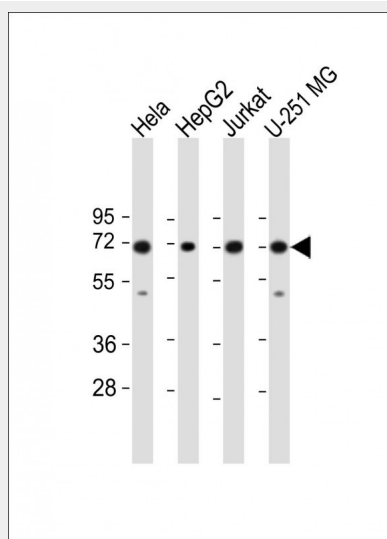
Provided below are standard protocols that you may find useful for product applications.

- [Western Blot](#)
- [Blocking Peptides](#)
- [Dot Blot](#)
- [Immunohistochemistry](#)
- [Immunofluorescence](#)
- [Immunoprecipitation](#)
- [Flow Cytometry](#)
- [Cell Culture](#)

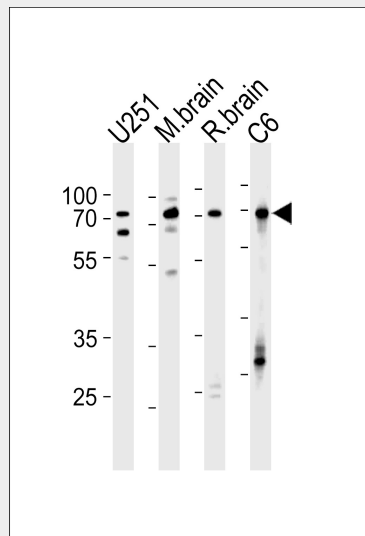
**FUBP1 Antibody (Center) - Images**



Immunohistochemical analysis of paraffin-embedded Human breast cancer section using Pink1(Cat#AP14126c). AP14126c was diluted at 1~1000 dilution. A undiluted biotinylated goat polyvalent antibody was used as the secondary, followed by DAB staining.



All lanes : Anti-FUBP1 Antibody at 1:1000 dilution Lane 1: Hela whole cell lysate Lane 2: HepG2 whole cell lysate Lane 3: Jurkat whole cell lysate Lane 4: U-251 MG whole cell lysate Lysates/proteins at 20 µg per lane. Secondary Goat Anti-Rabbit IgG, (H+L), Peroxidase conjugated at 1/10000 dilution. Predicted band size : 68 kDa Blocking/Dilution buffer: 5% NFDm/TBST.



FUBP1 Antibody (Center) (Cat. #AP14126c) western blot analysis in U251, rat C6 cell line, mouse brain, rat brain tissue lysates (35ug/lane). This demonstrates the FUBP1 antibody detected the FUBP1 protein (arrow).

#### **FUBP1 Antibody (Center) - Background**

This gene encodes a ssDNA binding protein that activates the far upstream element (FUSE) of c-myc and stimulates expression of c-myc in undifferentiated cells. Regulation of FUSE by FUBP occurs through single-strand binding of FUBP to the non-coding strand. This protein has been shown to function as an ATP-dependent DNA helicase.

#### **FUBP1 Antibody (Center) - References**

Hsiao, H.H., et al. Biochemistry 49(22):4620-4634(2010)  
Rabenhorst, U., et al. Hepatology 50(4):1121-1129(2009)  
Malz, M., et al. Hepatology 50(4):1130-1139(2009)  
Martins-de-Souza, D., et al. Eur Arch Psychiatry Clin Neurosci 259(3):151-163(2009)  
Jang, M., et al. Oncogene 28(12):1529-1536(2009)