

**YBX2 Antibody (Center)**  
**Purified Rabbit Polyclonal Antibody (Pab)**  
**Catalog # AP1412C****Specification**

---

**YBX2 Antibody (Center) - Product Information**

Application	WB,E
Primary Accession	<a href="#">Q9Y2T7</a>
Reactivity	Human
Host	Rabbit
Clonality	Polyclonal
Isotype	Rabbit IgG
Calculated MW	38518
Antigen Region	231-260

**YBX2 Antibody (Center) - Additional Information****Gene ID** 51087**Other Names**

Y-box-binding protein 2, Contrin, DNA-binding protein C, Dbpc, Germ cell-specific Y-box-binding protein, MSY2 homolog, YBX2, CSDA3, MSY2

**Target/Specificity**

This YBX2 antibody is generated from rabbits immunized with a KLH conjugated synthetic peptide between 231-260 amino acids from the Central region of human YBX2.

**Dilution**

WB~~1:1000

**Format**

Purified polyclonal antibody supplied in PBS with 0.09% (W/V) sodium azide. This antibody is prepared by Saturated Ammonium Sulfate (SAS) precipitation followed by dialysis against PBS.

**Storage**

Maintain refrigerated at 2-8°C for up to 2 weeks. For long term storage store at -20°C in small aliquots to prevent freeze-thaw cycles.

**Precautions**

YBX2 Antibody (Center) is for research use only and not for use in diagnostic or therapeutic procedures.

**YBX2 Antibody (Center) - Protein Information****Name** YBX2**Synonyms** CSDA3, MSY2

**Function** Major constituent of messenger ribonucleoprotein particles (mRNPs). Involved in the regulation of the stability and/or translation of germ cell mRNAs. Binds to Y-box consensus promoter element. Binds to full-length mRNA with high affinity in a sequence-independent manner. Binds to short RNA sequences containing the consensus site 5'-UCCAUCA- 3' with low affinity and limited sequence specificity. Its binding with maternal mRNAs is necessary for its cytoplasmic retention. May mark specific mRNAs (those transcribed from Y-box promoters) in the nucleus for cytoplasmic storage, thereby linking transcription and mRNA storage/translational delay (By similarity).

#### **Cellular Location**

Cytoplasm. Nucleus

#### **Tissue Location**

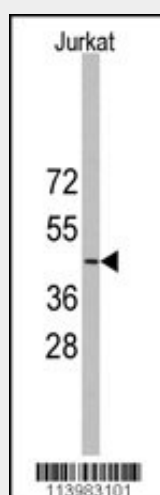
Expressed in oocytes and testicular germ cells in the stage of spermatogonia to spermatocyte. Also observed placental trophoblasts, as well as in vascular smooth muscle cells in the pulmonary artery, myocardium, and skeletal muscle. Undetectable in epithelial cells in respiratory, gastrointestinal, and urogenital tracts. Up-regulated in various carcinomas and germ cell tumors (at protein level).

### **YBX2 Antibody (Center) - Protocols**

Provided below are standard protocols that you may find useful for product applications.

- [Western Blot](#)
- [Blocking Peptides](#)
- [Dot Blot](#)
- [Immunohistochemistry](#)
- [Immunofluorescence](#)
- [Immunoprecipitation](#)
- [Flow Cytometry](#)
- [Cell Culture](#)

### **YBX2 Antibody (Center) - Images**



Western blot analysis of anti-YBX2 Antibody (Center) (RB13983) in Jurkat cell line lysates (35ug/lane). YBX2 (arrow) was detected using the purified Pab.

### **YBX2 Antibody (Center) - Background**

Major constituent of messenger ribonucleoprotein particles (mRNPs). Involved in the regulation of the stability and/or translation of germ cell mRNAs. Binds to Y-box consensus promoter element. Binds to full length mRNA with high affinity in a sequence-independent manner. Binds to short RNA sequences containing the consensus site 5'-UCCAUCA-3' with low affinity and limited sequence specificity. Its binding with maternal mRNAs is necessary for its cytoplasmic retention. May mark specific mRNAs (those transcribed from Y-box promoters) in the nucleus for cytoplasmic storage, thereby linking transcription and mRNA storage/translational delay.

#### **YBX2 Antibody (Center) - References**

Kohno,Y., Br. J. Cancer 94 (5), 710-716 (2006)  
Yoshida,T., Biochim. Biophys. Acta 1759 (1-2), 80-88 (2006)  
Tekur,S., J. Androl. 20 (1), 135-144 (1999)  
Gu,W., Biol. Reprod. 59 (5), 1266-1274 (1998)