

**CHRD Antibody (N-term)**  
**Affinity Purified Rabbit Polyclonal Antibody (Pab)**  
**Catalog # AP1416a****Specification**

---

**CHRD Antibody (N-term) - Product Information**

Application	WB, IHC-P,E
Primary Accession	<a href="#">Q9H2X0</a>
Reactivity	Human
Host	Rabbit
Clonality	Polyclonal
Isotype	Rabbit IgG
Calculated MW	102032
Antigen Region	137-167

**CHRD Antibody (N-term) - Additional Information****Gene ID** 8646**Other Names**

Chordin, CHRD

**Target/Specificity**

This CHRD antibody is generated from rabbits immunized with a KLH conjugated synthetic peptide between 137-167 amino acids from the N-terminal region of human CHRD.

**Dilution**

WB~~1:1000

IHC-P~~1:10~50

**Format**

Purified polyclonal antibody supplied in PBS with 0.09% (W/V) sodium azide. This antibody is prepared by Saturated Ammonium Sulfate (SAS) precipitation followed by dialysis against PBS.

**Storage**

Maintain refrigerated at 2-8°C for up to 2 weeks. For long term storage store at -20°C in small aliquots to prevent freeze-thaw cycles.

**Precautions**

CHRD Antibody (N-term) is for research use only and not for use in diagnostic or therapeutic procedures.

**CHRD Antibody (N-term) - Protein Information****Name** CHRD

**Function** Dorsalizing factor. Key developmental protein that dorsalizes early vertebrate embryonic tissues by binding to ventralizing TGF-beta family bone morphogenetic proteins (BMPs)

and sequestering them in latent complexes (By similarity).

**Cellular Location**

Secreted.

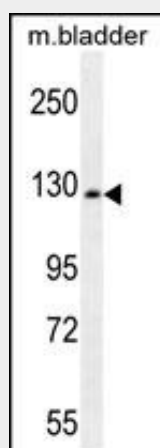
**Tissue Location**

Expressed at the highest level in liver.

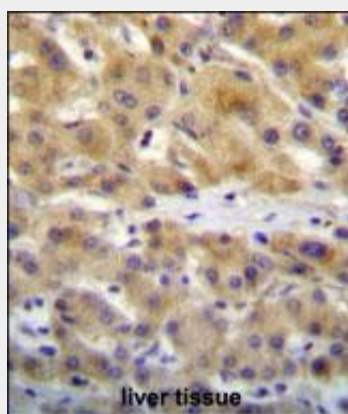
**CHRD Antibody (N-term) - Protocols**

Provided below are standard protocols that you may find useful for product applications.

- [Western Blot](#)
- [Blocking Peptides](#)
- [Dot Blot](#)
- [Immunohistochemistry](#)
- [Immunofluorescence](#)
- [Immunoprecipitation](#)
- [Flow Cytometry](#)
- [Cell Culture](#)

**CHRD Antibody (N-term) - Images**

CHRD Antibody (N-term) (Cat.#AP1416a) western blot analysis in mouse bladder tissue lysates (35ug/lane). This demonstrates the CHRD antibody detected the CHRD protein (arrow).



CHRD Antibody (N-term) (Cat. #AP1416a) immunohistochemistry analysis in formalin fixed and paraffin embedded human liver tissue followed by peroxidase conjugation of the secondary antibody and DAB staining. This data demonstrates the use of CHRD Antibody (N-term) for immunohistochemistry. Clinical relevance has not been evaluated.

#### **CHRD Antibody (N-term) - Background**

CHRD is a secreted protein that dorsalizes early vertebrate embryonic tissues by binding to ventralizing TGF-beta-like bone morphogenetic proteins and sequestering them in latent complexes. This protein may also have roles in organogenesis and during adulthood.

#### **CHRD Antibody (N-term) - References**

Lim, J., Cell 125 (4), 801-814 (2006)  
Moll, F., FASEB J. 20 (2), 240-250 (2006)

#### **CHRD Antibody (N-term) - Citations**

- [Chordin and noggin expression in the adult rat trigeminal nuclei.](#)