

**CHRD Antibody (C-term)**  
**Affinity Purified Rabbit Polyclonal Antibody (Pab)**  
**Catalog # AP1416b****Specification**

---

**CHRD Antibody (C-term) - Product Information**

|                   |                        |
|-------------------|------------------------|
| Application       | WB, IHC-P,E            |
| Primary Accession | <a href="#">Q9H2X0</a> |
| Reactivity        | Human                  |
| Host              | Rabbit                 |
| Clonality         | Polyclonal             |
| Isotype           | Rabbit IgG             |
| Calculated MW     | 102032                 |
| Antigen Region    | 926-955                |

**CHRD Antibody (C-term) - Additional Information****Gene ID** 8646**Other Names**  
Chordin, CHRD**Target/Specificity**

This CHRD antibody is generated from rabbits immunized with a KLH conjugated synthetic peptide between 926-955 amino acids from the C-terminal region of human CHRD.

**Dilution**

WB~~1:1000  
IHC-P~~1:10~50

**Format**

Purified polyclonal antibody supplied in PBS with 0.09% (W/V) sodium azide. This antibody is purified through a protein A column, followed by peptide affinity purification.

**Storage**

Maintain refrigerated at 2-8°C for up to 2 weeks. For long term storage store at -20°C in small aliquots to prevent freeze-thaw cycles.

**Precautions**

CHRD Antibody (C-term) is for research use only and not for use in diagnostic or therapeutic procedures.

**CHRD Antibody (C-term) - Protein Information****Name** CHRD

**Function** Dorsalizing factor. Key developmental protein that dorsalizes early vertebrate embryonic tissues by binding to ventralizing TGF-beta family bone morphogenetic proteins (BMPs)

and sequestering them in latent complexes (By similarity).

**Cellular Location**

Secreted.

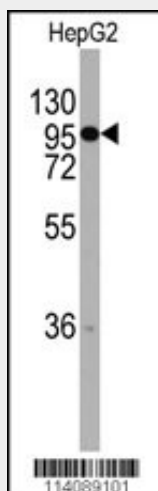
**Tissue Location**

Expressed at the highest level in liver.

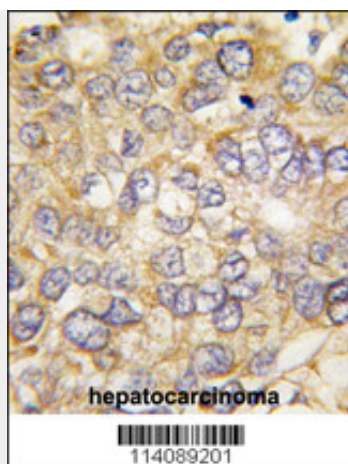
**CHRD Antibody (C-term) - Protocols**

Provided below are standard protocols that you may find useful for product applications.

- [Western Blot](#)
- [Blocking Peptides](#)
- [Dot Blot](#)
- [Immunohistochemistry](#)
- [Immunofluorescence](#)
- [Immunoprecipitation](#)
- [Flow Cytometry](#)
- [Cell Culture](#)

**CHRD Antibody (C-term) - Images**

Western blot analysis of anti-CHRD Antibody (C-term) (RB14089) in HepG2 cell line lysates (35ug/lane). CHRD (arrow) was detected using the purified Pab.



Formalin-fixed and paraffin-embedded human hepatocarcinoma tissue reacted with CHRD antibody (C-term) (Cat.#AP1416b), which was peroxidase-conjugated to the secondary antibody, followed by DAB staining. This data demonstrates the use of this antibody for immunohistochemistry; clinical relevance has not been evaluated.

#### **CHRD Antibody (C-term) - Background**

CHRD is a secreted protein that dorsalizes early vertebrate embryonic tissues by binding to ventralizing TGF-beta-like bone morphogenetic proteins and sequestering them in latent complexes. This protein may also have roles in organogenesis and during adulthood.

#### **CHRD Antibody (C-term) - References**

Lim,J., Cell 125 (4), 801-814 (2006)  
Moll,F., FASEB J. 20 (2), 240-250 (2006)