

**COL3A1 Antibody (C-term)**  
**Affinity Purified Rabbit Polyclonal Antibody (Pab)**  
**Catalog # AP14172b****Specification**

---

**COL3A1 Antibody (C-term) - Product Information**

|                   |                             |
|-------------------|-----------------------------|
| Application       | WB,E                        |
| Primary Accession | <a href="#">P02461</a>      |
| Other Accession   | <a href="#">NP_000081.1</a> |
| Reactivity        | Human                       |
| Host              | Rabbit                      |
| Clonality         | Polyclonal                  |
| Isotype           | Rabbit IgG                  |
| Calculated MW     | 138564                      |
| Antigen Region    | 1410-1438                   |

**COL3A1 Antibody (C-term) - Additional Information****Gene ID** 1281**Other Names**

Collagen alpha-1(III) chain, COL3A1

**Target/Specificity**

This COL3A1 antibody is generated from rabbits immunized with a KLH conjugated synthetic peptide between 1410-1438 amino acids from the C-terminal region of human COL3A1.

**Dilution**

WB~~1:1000

**Format**

Purified polyclonal antibody supplied in PBS with 0.09% (W/V) sodium azide. This antibody is purified through a protein A column, followed by peptide affinity purification.

**Storage**

Maintain refrigerated at 2-8°C for up to 2 weeks. For long term storage store at -20°C in small aliquots to prevent freeze-thaw cycles.

**Precautions**

COL3A1 Antibody (C-term) is for research use only and not for use in diagnostic or therapeutic procedures.

**COL3A1 Antibody (C-term) - Protein Information****Name** COL3A1

**Function** Collagen type III occurs in most soft connective tissues along with type I collagen. Involved in regulation of cortical development. Is the major ligand of ADGRG1 in the developing

brain and binding to ADGRG1 inhibits neuronal migration and activates the RhoA pathway by coupling ADGRG1 to GNA13 and possibly GNA12.

#### Cellular Location

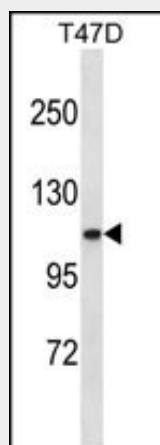
Secreted, extracellular space, extracellular matrix {ECO:0000255|PROSITE-ProRule:PRU00793}

### COL3A1 Antibody (C-term) - Protocols

Provided below are standard protocols that you may find useful for product applications.

- [Western Blot](#)
- [Blocking Peptides](#)
- [Dot Blot](#)
- [Immunohistochemistry](#)
- [Immunofluorescence](#)
- [Immunoprecipitation](#)
- [Flow Cytometry](#)
- [Cell Culture](#)

### COL3A1 Antibody (C-term) - Images



COL3A1 Antibody (C-term) (Cat. #AP14172b) western blot analysis in T47D cell line lysates (35ug/lane). This demonstrates the COL3A1 antibody detected the COL3A1 protein (arrow).

### COL3A1 Antibody (C-term) - Background

This gene encodes the pro- $\alpha 1$  chains of type III collagen, a fibrillar collagen that is found in extensible connective tissues such as skin, lung, uterus, intestine and the vascular system, frequently in association with type I collagen. Mutations in this gene are associated with Ehlers-Danlos syndrome types IV, and with aortic and arterial aneurysms. Two transcripts, resulting from the use of alternate polyadenylation signals, have been identified for this gene. [provided by R. Dalgleish].

### COL3A1 Antibody (C-term) - References

Romero, R., et al. Am. J. Obstet. Gynecol. 203 (4), 361 (2010) :  
Bailey, S.D., et al. Diabetes Care 33(10):2250-2253(2010)  
Romero, R., et al. Am. J. Obstet. Gynecol. 202 (5), 431 (2010) :

Taddese, S., et al. Biochim. Biophys. Acta 1804(4):731-739(2010)  
Jung, S.M., et al. Platelets 21(2):101-111(2010)