

**NPFFR1 Antibody (C-term)**  
**Affinity Purified Rabbit Polyclonal Antibody (Pab)**  
**Catalog # AP14196b**

**Specification**

---

**NPFFR1 Antibody (C-term) - Product Information**

Application	WB,E
Primary Accession	<a href="#">O9GZQ6</a>
Other Accession	<a href="#">NP_071429.1</a>
Reactivity	Human
Host	Rabbit
Clonality	Polyclonal
Isotype	Rabbit IgG
Calculated MW	47819
Antigen Region	337-366

**NPFFR1 Antibody (C-term) - Additional Information**

**Gene ID** 64106

**Other Names**

Neuropeptide FF receptor 1, G-protein coupled receptor 147, RFamide-related peptide receptor OT7T022, NPFFR1, GPR147, NPFF1

**Target/Specificity**

This NPFFR1 antibody is generated from rabbits immunized with a KLH conjugated synthetic peptide between 337-366 amino acids from the C-terminal region of human NPFFR1.

**Dilution**

WB~~1:1000

**Format**

Purified polyclonal antibody supplied in PBS with 0.09% (W/V) sodium azide. This antibody is purified through a protein A column, followed by peptide affinity purification.

**Storage**

Maintain refrigerated at 2-8°C for up to 2 weeks. For long term storage store at -20°C in small aliquots to prevent freeze-thaw cycles.

**Precautions**

NPFFR1 Antibody (C-term) is for research use only and not for use in diagnostic or therapeutic procedures.

**NPFFR1 Antibody (C-term) - Protein Information**

**Name** NPFFR1

**Synonyms** GPR147, NPFF1

**Function** Receptor for NPAF (A-18-F-amide) and NPFF (F-8-F-amide) neuropeptides, also known as morphine-modulating peptides. Can also be activated by a variety of naturally occurring or synthetic FMRF-amide like ligands. This receptor mediates its action by association with G proteins that activate a phosphatidylinositol-calcium second messenger system.

**Cellular Location**

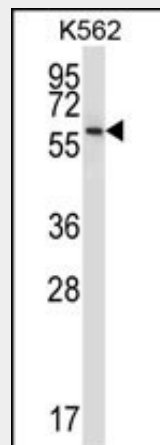
Cell membrane; Multi-pass membrane protein.

**NPFFR1 Antibody (C-term) - Protocols**

Provided below are standard protocols that you may find useful for product applications.

- [Western Blot](#)
- [Blocking Peptides](#)
- [Dot Blot](#)
- [Immunohistochemistry](#)
- [Immunofluorescence](#)
- [Immunoprecipitation](#)
- [Flow Cytometry](#)
- [Cell Culture](#)

**NPFFR1 Antibody (C-term) - Images**



NPFFR1 Antibody (C-term) (Cat. #AP14196b) western blot analysis in K562 cell line lysates (35ug/lane). This demonstrates the NPFFR1 antibody detected the NPFFR1 protein (arrow).

**NPFFR1 Antibody (C-term) - Background**

Receptor for NPAF (A-18-F-amide) and NPFF (F-8-F-amide) neuropeptides, also known as morphine-modulating peptides. Can also be activated by a variety of naturally occurring or synthetic FMRF-amide like ligands. This receptor mediates its action by association with G proteins that activate a phosphatidylinositol-calcium second messenger system.

**NPFFR1 Antibody (C-term) - References**

Rose, J.E., et al. Mol. Med. 16 (7-8), 247-253 (2010) :  
Ubuka, T., et al. PLoS ONE 4 (12), E8400 (2009) :  
Dowal, L., et al. J. Biol. Chem. 281(33):23999-24014(2006)  
Grupe, A., et al. Am. J. Hum. Genet. 78(1):78-88(2006)  
Bonini, J.A., et al. J. Biol. Chem. 275(50):39324-39331(2000)