

**TRIP6 Antibody (N-term)**  
**Affinity Purified Rabbit Polyclonal Antibody (Pab)**  
**Catalog # AP14201A****Specification**

---

**TRIP6 Antibody (N-term) - Product Information**

Application	WB, IHC-P,E
Primary Accession	<a href="#">Q15654</a>
Other Accession	<a href="#">NP_003293.2</a>
Reactivity	Human
Host	Rabbit
Clonality	Polyclonal
Isotype	Rabbit IgG
Calculated MW	50288
Antigen Region	95-124

**TRIP6 Antibody (N-term) - Additional Information****Gene ID** 7205**Other Names**

Thyroid receptor-interacting protein 6, TR-interacting protein 6, TRIP-6, Opa-interacting protein 1, OIP-1, Zyxin-related protein 1, ZRP-1, TRIP6, OIP1

**Target/Specificity**

This TRIP6 antibody is generated from rabbits immunized with a KLH conjugated synthetic peptide between 95-124 amino acids from the N-terminal region of human TRIP6.

**Dilution**

WB~~1:1000

IHC-P~~1:10~50

**Format**

Purified polyclonal antibody supplied in PBS with 0.09% (W/V) sodium azide. This antibody is purified through a protein A column, followed by peptide affinity purification.

**Storage**

Maintain refrigerated at 2-8°C for up to 2 weeks. For long term storage store at -20°C in small aliquots to prevent freeze-thaw cycles.

**Precautions**

TRIP6 Antibody (N-term) is for research use only and not for use in diagnostic or therapeutic procedures.

**TRIP6 Antibody (N-term) - Protein Information****Name** TRIP6

## Synonyms OIP1

**Function** Relays signals from the cell surface to the nucleus to weaken adherens junction and promote actin cytoskeleton reorganization and cell invasiveness. Involved in lysophosphatidic acid-induced cell adhesion and migration. Acts as a transcriptional coactivator for NF- kappa-B and JUN, and mediates the transrepression of these transcription factors induced by glucocorticoid receptor.

## Cellular Location

Cytoplasm, cytoskeleton. Cell junction, focal adhesion. Nucleus. Cytoplasm Note=Shuttles between nucleus and cytoplasm (PubMed:16624523) Colocalizes with actin (PubMed:10826496).

## Tissue Location

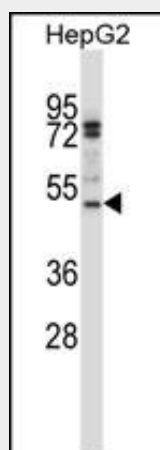
Abundantly expressed in kidney, liver and lung. Lower levels in heart, placenta and pancreas. Expressed in colonic epithelial cells. Up-regulated in colonic tumors

## TRIP6 Antibody (N-term) - Protocols

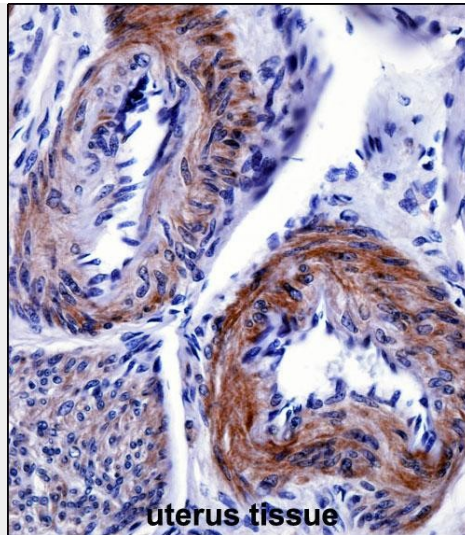
Provided below are standard protocols that you may find useful for product applications.

- [Western Blot](#)
- [Blocking Peptides](#)
- [Dot Blot](#)
- [Immunohistochemistry](#)
- [Immunofluorescence](#)
- [Immunoprecipitation](#)
- [Flow Cytometry](#)
- [Cell Culture](#)

## TRIP6 Antibody (N-term) - Images



TRIP6 Antibody (N-term) (Cat. #AP14201a) western blot analysis in HepG2 cell line lysates (35ug/lane). This demonstrates the TRIP6 antibody detected the TRIP6 protein (arrow).



TRIP6 Antibody (N-term) (AP14201a) immunohistochemistry analysis in formalin fixed and paraffin embedded human uterus tissue followed by peroxidase conjugation of the secondary antibody and DAB staining. This data demonstrates the use of TRIP6 Antibody (N-term) for immunohistochemistry. Clinical relevance has not been evaluated.

#### **TRIP6 Antibody (N-term) - Background**

This gene is a member of the zyxin family and encodes a protein with three LIM zinc-binding domains. This protein localizes to focal adhesion sites and along actin stress fibers. Recruitment of this protein to the plasma membrane occurs in a lysophosphatidic acid (LPA)-dependent manner and it regulates LPA-induced cell migration. Alternatively spliced variants which encode different protein isoforms have been described; however, not all variants have been fully characterized.

#### **TRIP6 Antibody (N-term) - References**

Shanmugarajan, S., et al. J. Cell. Biochem. 107(1):104-111(2009)  
Chastre, E., et al. FASEB J. 23(3):916-928(2009)  
Venkatesan, K., et al. Nat. Methods 6(1):83-90(2009)  
Shanmugarajan, S., et al. J. Cell. Biochem. 104(4):1500-1508(2008)  
Bai, C.Y., et al. J. Cell. Sci. 120 (PT 16), 2828-2837 (2007) :