

TOM1L1 Antibody (C-term)
Affinity Purified Rabbit Polyclonal Antibody (Pab)
Catalog # AP14233b

Specification

TOM1L1 Antibody (C-term) - Product Information

Application	WB,E
Primary Accession	O75674
Other Accession	NP_005477.2
Reactivity	Human
Host	Rabbit
Clonality	Polyclonal
Isotype	Rabbit IgG
Calculated MW	52989
Antigen Region	445-474

TOM1L1 Antibody (C-term) - Additional Information

Gene ID 10040

Other Names

TOM1-like protein 1, Src-activating and signaling molecule protein, Target of Myb-like protein 1, TOM1L1, SRCASM

Target/Specificity

This TOM1L1 antibody is generated from rabbits immunized with a KLH conjugated synthetic peptide between 445-474 amino acids from the C-terminal region of human TOM1L1.

Dilution

WB~~1:1000

Format

Purified polyclonal antibody supplied in PBS with 0.09% (W/V) sodium azide. This antibody is purified through a protein A column, followed by peptide affinity purification.

Storage

Maintain refrigerated at 2-8°C for up to 2 weeks. For long term storage store at -20°C in small aliquots to prevent freeze-thaw cycles.

Precautions

TOM1L1 Antibody (C-term) is for research use only and not for use in diagnostic or therapeutic procedures.

TOM1L1 Antibody (C-term) - Protein Information

Name TOM1L1

Synonyms SRCASM

Function Probable adapter protein involved in signaling pathways. Interacts with the SH2 and SH3 domains of various signaling proteins when it is phosphorylated. May promote FYN activation, possibly by disrupting intramolecular SH3-dependent interactions (By similarity).

Cellular Location

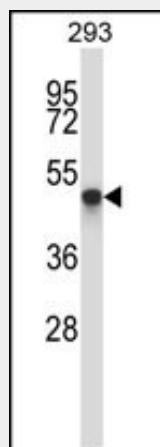
Golgi apparatus, Golgi stack. Endosome membrane. Cytoplasm. Membrane; Peripheral membrane protein; Cytoplasmic side. Note=A small proportion is membrane-associated

TOM1L1 Antibody (C-term) - Protocols

Provided below are standard protocols that you may find useful for product applications.

- [Western Blot](#)
- [Blocking Peptides](#)
- [Dot Blot](#)
- [Immunohistochemistry](#)
- [Immunofluorescence](#)
- [Immunoprecipitation](#)
- [Flow Cytometry](#)
- [Cell Culture](#)

TOM1L1 Antibody (C-term) - Images



TOM1L1 Antibody (C-term) (Cat. #AP14233b) western blot analysis in 293 cell line lysates (35ug/lane). This demonstrates the TOM1L1 antibody detected the TOM1L1 protein (arrow).

TOM1L1 Antibody (C-term) - Background

Probable adapter protein involved in signaling pathways. Interacts with the SH2 and SH3 domains of various signaling proteins when it is phosphorylated. May promotes FYN activation, possibly by disrupting intramolecular SH3-dependent interactions (By similarity).

TOM1L1 Antibody (C-term) - References

- Qi, Y., et al. Anticancer Res. 30(9):3535-3539(2010)
Liu, N.S., et al. EMBO J. 28(22):3485-3499(2009)
Meulener, M.C., et al. J. Cutan. Pathol. 36(3):291-295(2009)
Elmarghani, A., et al. Mediators Inflamm. 2009, 416298 (2009) :
Thalappilly, S., et al. Proteomics 8(15):3071-3081(2008)