

**CCDC50 Antibody (Center)**  
**Affinity Purified Rabbit Polyclonal Antibody (Pab)**  
**Catalog # AP14241C****Specification**

---

**CCDC50 Antibody (Center) - Product Information**

Application	WB, IHC-P,E
Primary Accession	<a href="#">Q8IVM0</a>
Other Accession	<a href="#">Q810U0</a> , <a href="#">Q810U5</a> , <a href="#">NP_777568.1</a> , <a href="#">NP_848018.1</a>
Reactivity	Human
Predicted	Mouse, Rat
Host	Rabbit
Clonality	Polyclonal
Isotype	Rabbit IgG
Calculated MW	35822
Antigen Region	86-114

**CCDC50 Antibody (Center) - Additional Information****Gene ID** 152137**Other Names**

Coiled-coil domain-containing protein 50, Protein Ymer, CCDC50, C3orf6

**Target/Specificity**

This CCDC50 antibody is generated from rabbits immunized with a KLH conjugated synthetic peptide between 86-114 amino acids from the Central region of human CCDC50.

**Dilution**

WB~~1:1000

IHC-P~~1:10~50

**Format**

Purified polyclonal antibody supplied in PBS with 0.09% (W/V) sodium azide. This antibody is purified through a protein A column, followed by peptide affinity purification.

**Storage**

Maintain refrigerated at 2-8°C for up to 2 weeks. For long term storage store at -20°C in small aliquots to prevent freeze-thaw cycles.

**Precautions**

CCDC50 Antibody (Center) is for research use only and not for use in diagnostic or therapeutic procedures.

**CCDC50 Antibody (Center) - Protein Information****Name** CCDC50

**Synonyms** C3orf6

**Function** Involved in EGFR signaling.

**Cellular Location**

Cytoplasm. Note=Associated with microtubules of the cytoskeleton and mitotic apparatus.

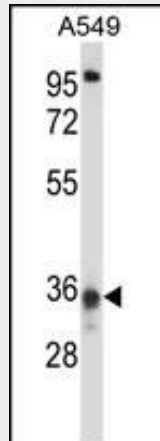
**Tissue Location**

Isoform 1 and isoform 2 are coexpressed in placenta, liver, lung, kidney and pancreas. Only isoform 1 is detected in skeletal muscle, brain and heart.

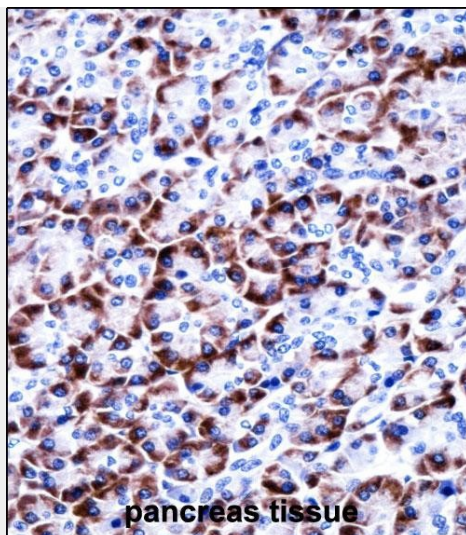
**CCDC50 Antibody (Center) - Protocols**

Provided below are standard protocols that you may find useful for product applications.

- [Western Blot](#)
- [Blocking Peptides](#)
- [Dot Blot](#)
- [Immunohistochemistry](#)
- [Immunofluorescence](#)
- [Immunoprecipitation](#)
- [Flow Cytometry](#)
- [Cell Culture](#)

**CCDC50 Antibody (Center) - Images**

CCDC50 Antibody (Center) (Cat. #AP14241c) western blot analysis in A549 cell line lysates (35ug/lane). This demonstrates the CCDC50 antibody detected the CCDC50 protein (arrow).



CCDC50 Antibody (Center) (AP14241c) immunohistochemistry analysis in formalin fixed and paraffin embedded human pancreas tissue followed by peroxidase conjugation of the secondary antibody and DAB staining. This data demonstrates the use of CCDC50 Antibody (Center) for immunohistochemistry. Clinical relevance has not been evaluated.

#### **CCDC50 Antibody (Center) - Background**

This gene encodes a soluble, cytoplasmic, tyrosine-phosphorylated protein with multiple ubiquitin-interacting domains. Mutations in this gene cause nonsyndromic, postlingual, progressive sensorineural DFNA44 hearing loss. In mouse, the protein is expressed in the inner ear during development and postnatal maturation and associates with microtubule-based structures. This protein may also function as a negative regulator of NF- $\kappa$ B signaling and as an effector of epidermal growth factor (EGF)-mediated cell signaling. Alternative splicing results in multiple transcript variants encoding distinct isoforms. [provided by RefSeq].

#### **CCDC50 Antibody (Center) - References**

Farfsing, A., et al. Leukemia 23(11):2018-2026(2009)  
Kameda, H., et al. Biochem. Biophys. Res. Commun. 378(4):744-749(2009)  
Bohgaki, M., et al. Biochim. Biophys. Acta 1783(5):826-837(2008)  
Modamio-Hoybjor, S., et al. Am. J. Hum. Genet. 80(6):1076-1089(2007)  
Lamesch, P., et al. Genomics 89(3):307-315(2007)