

**AGGF1 Antibody (N-term)**  
**Affinity Purified Rabbit Polyclonal Antibody (Pab)**  
**Catalog # AP14242a****Specification**

---

**AGGF1 Antibody (N-term) - Product Information**

Application	WB,E
Primary Accession	<a href="#">Q8N302</a>
Other Accession	<a href="#">NP_060516.2</a>
Reactivity	Human
Host	Rabbit
Clonality	Polyclonal
Isotype	Rabbit IgG
Calculated MW	80977
Antigen Region	61-90

**AGGF1 Antibody (N-term) - Additional Information****Gene ID** 55109**Other Names**

Angiogenic factor with G patch and FHA domains 1, Angiogenic factor VG5Q, hVG5Q, G patch domain-containing protein 7, Vasculogenesis gene on 5q protein, AGGF1, GPATC7, GPATCH7, VG5Q

**Target/Specificity**

This AGGF1 antibody is generated from rabbits immunized with a KLH conjugated synthetic peptide between 61-90 amino acids from the N-terminal region of human AGGF1.

**Dilution**

WB~~1:1000

**Format**

Purified polyclonal antibody supplied in PBS with 0.09% (W/V) sodium azide. This antibody is purified through a protein A column, followed by peptide affinity purification.

**Storage**

Maintain refrigerated at 2-8°C for up to 2 weeks. For long term storage store at -20°C in small aliquots to prevent freeze-thaw cycles.

**Precautions**

AGGF1 Antibody (N-term) is for research use only and not for use in diagnostic or therapeutic procedures.

**AGGF1 Antibody (N-term) - Protein Information****Name** AGGF1

**Synonyms** GPATC7, GPATCH7, VG5Q

**Function** Promotes angiogenesis and the proliferation of endothelial cells. Able to bind to endothelial cells and promote cell proliferation, suggesting that it may act in an autocrine fashion.

**Cellular Location**

Cytoplasm. Secreted. Note=Cytoplasmic in microvascular endothelial cells. Upon angiogenesis, when endothelial cell tube formation is initiated, it is secreted

**Tissue Location**

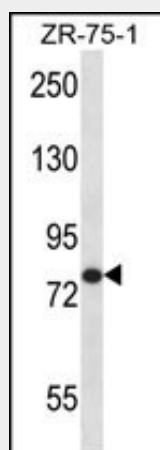
Widely expressed. Expressed in endothelial cells, vascular smooth muscle cells and osteoblasts. Expressed in umbilical vein endothelial cells and microvascular endothelial cells

**AGGF1 Antibody (N-term) - Protocols**

Provided below are standard protocols that you may find useful for product applications.

- [Western Blot](#)
- [Blocking Peptides](#)
- [Dot Blot](#)
- [Immunohistochemistry](#)
- [Immunofluorescence](#)
- [Immunoprecipitation](#)
- [Flow Cytometry](#)
- [Cell Culture](#)

**AGGF1 Antibody (N-term) - Images**



AGGF1 Antibody (N-term) (Cat. #AP14242a) western blot analysis in ZR-75-1 cell line lysates (35ug/lane). This demonstrates the AGGF1 antibody detected the AGGF1 protein (arrow).

**AGGF1 Antibody (N-term) - Background**

This gene encodes an angiogenic factor that promotes proliferation of endothelial cells. Mutations in this gene are associated with a susceptibility to Klippel-Trenaunay syndrome. Pseudogenes of this gene are found on chromosomes 3, 4, 10 and 16.

**AGGF1 Antibody (N-term) - References**

Fan, C., et al. J. Biol. Chem. 284(35):23331-23343(2009)  
Hu, Y., et al. Ann. Hum. Genet. 72 (PT 5), 636-643 (2008) :  
Gutierrez, S., et al. Am. J. Med. Genet. A 140(24):2832-2833(2006)  
Olsen, J.V., et al. Cell 127(3):635-648(2006)  
Kihiczak, G.G., et al. Int. J. Dermatol. 45(8):883-890(2006)