

**LIME1 Antibody (C-term)**  
**Affinity Purified Rabbit Polyclonal Antibody (Pab)**  
**Catalog # AP14247b****Specification**

---

**LIME1 Antibody (C-term) - Product Information**

Application	WB,E
Primary Accession	<a href="#">Q9H400</a>
Other Accession	<a href="#">NP_060276.2</a>
Reactivity	Human
Host	Rabbit
Clonality	Polyclonal
Isotype	Rabbit IgG
Calculated MW	31288
Antigen Region	190-219

**LIME1 Antibody (C-term) - Additional Information****Gene ID** 54923**Other Names**

Lck-interacting transmembrane adapter 1, Lck-interacting membrane protein, Lck-interacting molecule, LIME1, LIME

**Target/Specificity**

This LIME1 antibody is generated from rabbits immunized with a KLH conjugated synthetic peptide between 190-219 amino acids from the C-terminal region of human LIME1.

**Dilution**

WB~~1:1000

**Format**

Purified polyclonal antibody supplied in PBS with 0.09% (W/V) sodium azide. This antibody is purified through a protein A column, followed by peptide affinity purification.

**Storage**

Maintain refrigerated at 2-8°C for up to 2 weeks. For long term storage store at -20°C in small aliquots to prevent freeze-thaw cycles.

**Precautions**

LIME1 Antibody (C-term) is for research use only and not for use in diagnostic or therapeutic procedures.

**LIME1 Antibody (C-term) - Protein Information****Name** LIME1**Synonyms** LIME

**Function** Involved in BCR (B-cell antigen receptor)-mediated signaling in B-cells and TCR (T-cell antigen receptor)-mediated T-cell signaling in T-cells. In absence of TCR signaling, may be involved in CD4- mediated inhibition of T-cell activation. Couples activation of these receptors and their associated kinases with distal intracellular events such as calcium mobilization or MAPK activation through the recruitment of PLCG2, GRB2, GRAP2, and other signaling molecules.

#### **Cellular Location**

Cell membrane; Single-pass type III membrane protein Note=Present in lipid rafts. Recruited to the immunological synapse upon conjugation of T-cell with antigen-presenting cell

#### **Tissue Location**

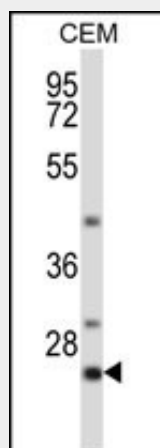
Expressed in peripheral blood lymphocytes, lymphoid tissues, and liver. Present in T-cells and plasma cells, and in various hematopoietic cell lines (at protein level)

### **LIME1 Antibody (C-term) - Protocols**

Provided below are standard protocols that you may find useful for product applications.

- [Western Blot](#)
- [Blocking Peptides](#)
- [Dot Blot](#)
- [Immunohistochemistry](#)
- [Immunofluorescence](#)
- [Immunoprecipitation](#)
- [Flow Cytometry](#)
- [Cell Culture](#)

### **LIME1 Antibody (C-term) - Images**



LIME1 Antibody (C-term) (Cat. #AP14247b) western blot analysis in CEM cell line lysates (35ug/lane). This demonstrates the LIME1 antibody detected the LIME1 protein (arrow).

### **LIME1 Antibody (C-term) - Background**

LIME1 is a raft-associated transmembrane adaptor phosphoprotein that is preferentially expressed in hemopoietic cells, particularly T cells (Brdickova et al., 2003 [PubMed 14610046]; Hur et al., 2003 [PubMed 14610044]).

### **LIME1 Antibody (C-term) - References**

Ahn, E., et al. Blood 107(4):1521-1527(2006)  
Tedoldi, S., et al. Blood 107(1):213-221(2006)  
Wan, D., et al. Proc. Natl. Acad. Sci. U.S.A. 101(44):15724-15729(2004)  
Brdickova, N., et al. J. Exp. Med. 198(10):1453-1462(2003)  
Hur, E.M., et al. J. Exp. Med. 198(10):1463-1473(2003)