

TEAD2 Antibody (Center)
Affinity Purified Rabbit Polyclonal Antibody (Pab)
Catalog # AP14282c**Specification**

TEAD2 Antibody (Center) - Product Information

Application	WB,E
Primary Accession	Q15562
Other Accession	P48301 , NP_003589.1
Reactivity	Human, Mouse
Host	Rabbit
Clonality	Polyclonal
Isotype	Rabbit IgG
Calculated MW	49243
Antigen Region	267-295

TEAD2 Antibody (Center) - Additional Information**Gene ID** 8463**Other Names**

Transcriptional enhancer factor TEF-4, TEA domain family member 2, TEAD-2, TEAD2, TEF4

Target/Specificity

This TEAD2 antibody is generated from rabbits immunized with a KLH conjugated synthetic peptide between 267-295 amino acids from the Central region of human TEAD2.

Dilution

WB~~1:1000

Format

Purified polyclonal antibody supplied in PBS with 0.09% (W/V) sodium azide. This antibody is purified through a protein A column, followed by peptide affinity purification.

Storage

Maintain refrigerated at 2-8°C for up to 2 weeks. For long term storage store at -20°C in small aliquots to prevent freeze-thaw cycles.

Precautions

TEAD2 Antibody (Center) is for research use only and not for use in diagnostic or therapeutic procedures.

TEAD2 Antibody (Center) - Protein Information**Name** TEAD2**Synonyms** TEF4

Function Transcription factor which plays a key role in the Hippo signaling pathway, a pathway involved in organ size control and tumor suppression by restricting proliferation and promoting apoptosis. The core of this pathway is composed of a kinase cascade wherein MST1/MST2, in complex with its regulatory protein SAV1, phosphorylates and activates LATS1/2 in complex with its regulatory protein MOB1, which in turn phosphorylates and inactivates YAP1 oncoprotein and WWTR1/TAZ. Acts by mediating gene expression of YAP1 and WWTR1/TAZ, thereby regulating cell proliferation, migration and epithelial mesenchymal transition (EMT) induction. Binds to the SPH and GT-IIC 'enhancers' (5'-GTGGAATGT-3'). May be involved in the gene regulation of neural development. Binds to the M-CAT motif.

Cellular Location

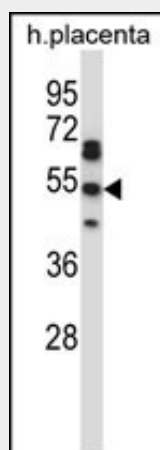
Nucleus.

TEAD2 Antibody (Center) - Protocols

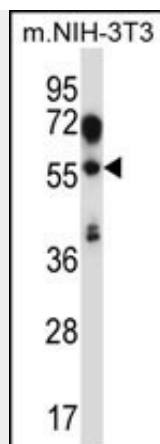
Provided below are standard protocols that you may find useful for product applications.

- [Western Blot](#)
- [Blocking Peptides](#)
- [Dot Blot](#)
- [Immunohistochemistry](#)
- [Immunofluorescence](#)
- [Immunoprecipitation](#)
- [Flow Cytometry](#)
- [Cell Culture](#)

TEAD2 Antibody (Center) - Images



TEAD2 Antibody (Center) (Cat. #AP14282c) western blot analysis in human placenta tissue lysates (35ug/lane). This demonstrates the TEAD2 antibody detected the TEAD2 protein (arrow).



TEAD2 Antibody (Center) (Cat. #AP14282c) western blot analysis in mouse NIH-3T3 cell line lysates (35ug/lane). This demonstrates the TEAD2 antibody detected the TEAD2 protein (arrow).

TEAD2 Antibody (Center) - Background

Transcription factor which plays a key role in the Hippo signaling pathway, a pathway involved in organ size control and tumor suppression by restricting proliferation and promoting apoptosis. The core of this pathway is composed of a kinase cascade wherein MST1/MST2, in complex with its regulatory protein SAV1, phosphorylates and activates LATS1/2 in complex with its regulatory protein MOB1, which in turn phosphorylates and inactivates YAP1 oncoprotein and WWTR1/TAZ. Acts by mediating gene expression of YAP1 and WWTR1/TAZ, thereby regulating cell proliferation, migration and epithelial mesenchymal transition (EMT) induction. Binds to the SPH and GT-IIC 'enhancers' (5'-GTGGAATGT-3'). May be involved in the gene regulation of neural development. Binds to the M-CAT motif.

TEAD2 Antibody (Center) - References

- Bailey, S.D., et al. Diabetes Care 33(10):2250-2253(2010)
- Tian, W., et al. Proc. Natl. Acad. Sci. U.S.A. 107(16):7293-7298(2010)
- Talmud, P.J., et al. Am. J. Hum. Genet. 85(5):628-642(2009)
- Zhang, H., et al. J. Biol. Chem. 284(20):13355-13362(2009)
- Zhao, B., et al. Genes Dev. 22(14):1962-1971(2008)