

ING1 Antibody (N-term)
Affinity Purified Rabbit Polyclonal Antibody (Pab)
Catalog # AP14335a**Specification**

ING1 Antibody (N-term) - Product Information

Application	WB,E
Primary Accession	O9UK53
Other Accession	NP_937862.1 , NP_937861.1 , NP_005528.3
Reactivity	Human
Host	Rabbit
Clonality	Polyclonal
Isotype	Rabbit IgG
Calculated MW	46738
Antigen Region	1-30

ING1 Antibody (N-term) - Additional Information**Gene ID** 3621**Other Names**

Inhibitor of growth protein 1, ING1

Target/Specificity

This ING1 antibody is generated from rabbits immunized with a KLH conjugated synthetic peptide between 1-30 amino acids from the N-terminal region of human ING1.

Dilution

WB~~1:1000

Format

Purified polyclonal antibody supplied in PBS with 0.09% (W/V) sodium azide. This antibody is purified through a protein A column, followed by peptide affinity purification.

Storage

Maintain refrigerated at 2-8°C for up to 2 weeks. For long term storage store at -20°C in small aliquots to prevent freeze-thaw cycles.

Precautions

ING1 Antibody (N-term) is for research use only and not for use in diagnostic or therapeutic procedures.

ING1 Antibody (N-term) - Protein Information**Name** ING1

Function Cooperates with p53/TP53 in the negative regulatory pathway of cell growth by modulating p53-dependent transcriptional activation. Implicated as a tumor suppressor gene.

Cellular Location

Nucleus.

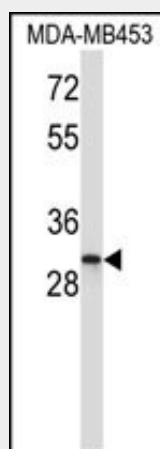
Tissue Location

Isoform 2 was expressed in all normal tissues and cells examined, as well as in all breast cancer and melanoma cell lines examined. Isoform 3 was expressed in testis, liver, and kidney, weakly expressed in colon and brain and not expressed in breast and cultured melanocytes. Isoform 4 was highly expressed in testis and weakly expressed in brain, but not expressed in breast, colon, kidney, melanocytes, breast cancer or melanoma cell lines

ING1 Antibody (N-term) - Protocols

Provided below are standard protocols that you may find useful for product applications.

- [Western Blot](#)
- [Blocking Peptides](#)
- [Dot Blot](#)
- [Immunohistochemistry](#)
- [Immunofluorescence](#)
- [Immunoprecipitation](#)
- [Flow Cytometry](#)
- [Cell Culture](#)

ING1 Antibody (N-term) - Images

ING1 Antibody (N-term) (Cat. #AP14335a) western blot analysis in MDA-MB453 cell line lysates (35ug/lane). This demonstrates the ING1 antibody detected the ING1 protein (arrow).

ING1 Antibody (N-term) - Background

This gene encodes a tumor suppressor protein that can induce cell growth arrest and apoptosis. The encoded protein is a nuclear protein that physically interacts with the tumor suppressor protein TP53 and is a component of the p53 signaling pathway. Reduced expression and rearrangement of this gene have been detected in various cancers. Multiple alternatively spliced transcript variants encoding distinct isoforms have been reported.

ING1 Antibody (N-term) - References

Zhu, Z., et al. Hepatology 49(2):504-512(2009)
Sayan, B., et al. Hybridoma (Larchmt) (2009) In press :
Tallen, G., et al. Oncol. Res. 18 (2-3), 95-105 (2009) :
Halaschek-Wiener, J., et al. PLoS ONE 4 (8), E6641 (2009) :
Han, X., et al. Nat. Cell Biol. 10(11):1333-1340(2008)