

**GFRA2 Antibody (C-term)**  
**Affinity Purified Rabbit Polyclonal Antibody (Pab)**  
**Catalog # AP14374b****Specification**

---

**GFRA2 Antibody (C-term) - Product Information**

Application	WB,E
Primary Accession	<a href="#">O00451</a>
Other Accession	<a href="#">O08842</a> , <a href="#">NP_001486.4</a> , <a href="#">NP_001158510.1</a> , <a href="#">NP_001158511.1</a>
Reactivity	Human
Predicted	Mouse
Host	Rabbit
Clonality	Polyclonal
Isotype	Rabbit IgG
Calculated MW	51544
Antigen Region	361-390

**GFRA2 Antibody (C-term) - Additional Information****Gene ID** 2675**Other Names**

GDNF family receptor alpha-2, GDNF receptor alpha-2, GDNFR-alpha-2, GFR-alpha-2, GDNF receptor beta, GDNFR-beta, Neurturin receptor alpha, NRTNR-alpha, NTNR-alpha, RET ligand 2, TGF-beta-related neurotrophic factor receptor 2, GFRA2, GDNFRB, RETL2, TRNR2

**Target/Specificity**

This GFRA2 antibody is generated from rabbits immunized with a KLH conjugated synthetic peptide between 361-390 amino acids from the C-terminal region of human GFRA2.

**Dilution**

WB~~1:1000

**Format**

Purified polyclonal antibody supplied in PBS with 0.09% (W/V) sodium azide. This antibody is purified through a protein A column, followed by peptide affinity purification.

**Storage**

Maintain refrigerated at 2-8°C for up to 2 weeks. For long term storage store at -20°C in small aliquots to prevent freeze-thaw cycles.

**Precautions**

GFRA2 Antibody (C-term) is for research use only and not for use in diagnostic or therapeutic procedures.

**GFRA2 Antibody (C-term) - Protein Information**

**Name** GFRA2

**Synonyms** GDNFRB, RETL2, TRNR2

**Function** Receptor for neurturin. Mediates the NRTN-induced autophosphorylation and activation of the RET receptor. Also able to mediate GDNF signaling through the RET tyrosine kinase receptor.

**Cellular Location**

Cell membrane; Lipid-anchor, GPI- anchor

**Tissue Location**

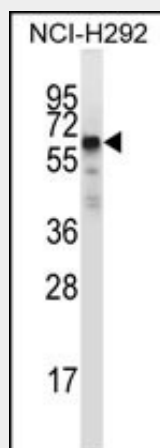
Isoform 1 is found in both brain and placenta.

**GFRA2 Antibody (C-term) - Protocols**

Provided below are standard protocols that you may find useful for product applications.

- [Western Blot](#)
- [Blocking Peptides](#)
- [Dot Blot](#)
- [Immunohistochemistry](#)
- [Immunofluorescence](#)
- [Immunoprecipitation](#)
- [Flow Cytometry](#)
- [Cell Culture](#)

**GFRA2 Antibody (C-term) - Images**



GFRA2 Antibody (C-term) (Cat. #AP14374b) western blot analysis in NCI-H292 cell line lysates (35ug/lane). This demonstrates the GFRA2 antibody detected the GFRA2 protein (arrow).

**GFRA2 Antibody (C-term) - Background**

Glial cell line-derived neurotrophic factor (GDNF) and neurturin (NTN) are two structurally related, potent neurotrophic factors that play key roles in the control of neuron survival and differentiation. The protein encoded by this gene is a member of the GDNF receptor family. It is a glycosylphosphatidylinositol(GPI)-linked cell surface receptor for

both GDNF and NTN, and mediates activation of the RET tyrosine kinase receptor. This encoded protein acts preferentially as a receptor for NTN compared to its other family member, GDNF family receptor alpha 1. This gene is a candidate gene for RET-associated diseases. Multiple transcript variants encoding different isoforms have been found for this gene.

#### **GFRA2 Antibody (C-term) - References**

Souza, R.P., et al. J Psychiatr Res 44(11):700-706(2010)  
Souza, R.P., et al. Psychopharmacology (Berl.) 210(3):347-354(2010)  
Buysschaert, I.D., et al. Allergy 65(5):616-622(2010)  
Lavedan, C., et al. Mol. Psychiatry 14(8):804-819(2009)  
Volpi, S., et al. J Clin Psychiatry 70(6):801-809(2009)