

**ARIH2 Antibody (C-term)**  
**Affinity Purified Rabbit Polyclonal Antibody (Pab)**  
**Catalog # AP14375b****Specification**

---

**ARIH2 Antibody (C-term) - Product Information**

Application	WB, IHC-P,E
Primary Accession	<a href="#">O95376</a>
Other Accession	<a href="#">O9Z1K6</a> , <a href="#">NP_006312.1</a>
Reactivity	Human
Predicted	Mouse
Host	Rabbit
Clonality	Polyclonal
Isotype	Rabbit IgG
Calculated MW	57819
Antigen Region	445-474

**ARIH2 Antibody (C-term) - Additional Information****Gene ID** 10425**Other Names**

E3 ubiquitin-protein ligase ARIH2, ARI-2, Protein ariadne-2 homolog, 632-, Triad1 protein, ARIH2, ARI2, TRIAD1

**Target/Specificity**

This ARIH2 antibody is generated from rabbits immunized with a KLH conjugated synthetic peptide between 445-474 amino acids from the C-terminal region of human ARIH2.

**Dilution**WB~~1:1000  
IHC-P~~1:10~50**Format**

Purified polyclonal antibody supplied in PBS with 0.09% (W/V) sodium azide. This antibody is purified through a protein A column, followed by peptide affinity purification.

**Storage**

Maintain refrigerated at 2-8°C for up to 2 weeks. For long term storage store at -20°C in small aliquots to prevent freeze-thaw cycles.

**Precautions**

ARIH2 Antibody (C-term) is for research use only and not for use in diagnostic or therapeutic procedures.

**ARIH2 Antibody (C-term) - Protein Information****Name** ARIH2

**Synonyms** ARI2, TRIAD1 {ECO:0000303|PubMed:1611831

**Function** E3 ubiquitin-protein ligase, which catalyzes ubiquitination of target proteins together with ubiquitin-conjugating enzyme E2 UBE2L3 (PubMed:[16118314](#), PubMed:[17646546](#), PubMed:[19340006](#), PubMed:[24076655](#)). Acts as an atypical E3 ubiquitin-protein ligase by working together with cullin-5-RING ubiquitin ligase complex (ECS complex, also named CRL5 complex) and initiating ubiquitination of ECS substrates: associates with ECS complex and specifically mediates addition of the first ubiquitin on ECS targets (By similarity). The initial ubiquitin is then elongated (By similarity). E3 ubiquitin-protein ligase activity is activated upon binding to neddylated form of the ECS complex (PubMed:[24076655](#)). Mediates 'Lys-6', 'Lys-48'- and 'Lys-63'-linked polyubiquitination (PubMed:[16118314](#), PubMed:[17646546](#), PubMed:[19340006](#)). May play a role in myelopoiesis (PubMed:[19340006](#)).

**Cellular Location**

Nucleus. Cytoplasm

**Tissue Location**

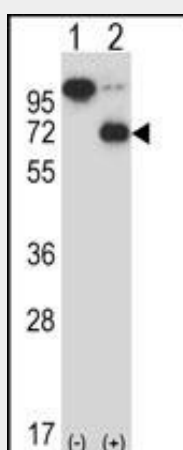
Widely expressed with higher expression in granulocytes.

**ARIH2 Antibody (C-term) - Protocols**

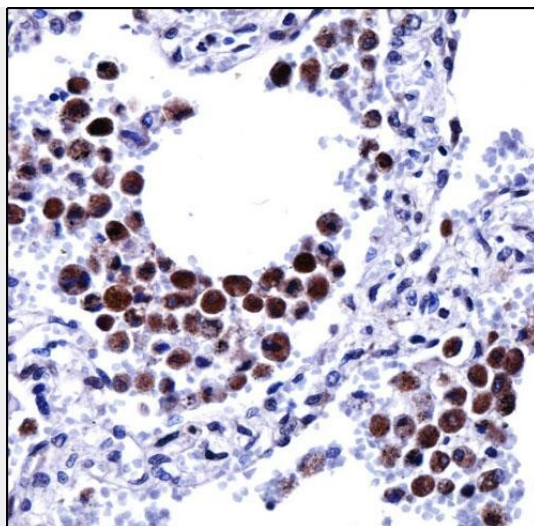
Provided below are standard protocols that you may find useful for product applications.

- [Western Blot](#)
- [Blocking Peptides](#)
- [Dot Blot](#)
- [Immunohistochemistry](#)
- [Immunofluorescence](#)
- [Immunoprecipitation](#)
- [Flow Cytometry](#)
- [Cell Culture](#)

**ARIH2 Antibody (C-term) - Images**



Western blot analysis of ARIH2 (arrow) using rabbit polyclonal ARIH2 Antibody (C-term) (Cat. #AP14375b). 293 cell lysates (2 ug/lane) either nontransfected (Lane 1) or transiently transfected (Lane 2) with the ARIH2 gene.



ARIH2 Antibody (C-term) (AP14375b) immunohistochemistry analysis in formalin fixed and paraffin embedded human lung tissue followed by peroxidase conjugation of the secondary antibody and DAB staining. This data demonstrates the use of ARIH2 Antibody (C-term) for immunohistochemistry. Clinical relevance has not been evaluated.

#### **ARIH2 Antibody (C-term) - Background**

E3 ubiquitin-protein ligase mediating 'Lys-48'-and 'Lys-63'-linked polyubiquitination and subsequent proteasomal degradation of modified proteins. May play a role in myelopoiesis.

#### **ARIH2 Antibody (C-term) - References**

- Marteijn, J.A., et al. Leukemia 23(8):1480-1489(2009)
- Marteijn, J.A., et al. Blood 110(9):3128-3135(2007)
- Matsuoka, S., et al. Science 316(5828):1160-1166(2007)
- Marteijn, J.A., et al. Blood 106(13):4114-4123(2005)
- Stelzl, U., et al. Cell 122(6):957-968(2005)