

**FOXD1 Antibody (N-term)**  
**Affinity Purified Rabbit Polyclonal Antibody (Pab)**  
**Catalog # AP14388a****Specification**

---

**FOXD1 Antibody (N-term) - Product Information**

Application	IF, WB, IHC-P,E
Primary Accession	<a href="#">Q16676</a>
Other Accession	<a href="#">Q61345</a> , <a href="#">NP_004463.1</a>
Reactivity	Human, Mouse
Predicted	Mouse
Host	Rabbit
Clonality	Polyclonal
Isotype	Rabbit IgG
Antigen Region	1-30

**FOXD1 Antibody (N-term) - Additional Information****Gene ID** 2297**Other Names**

Forkhead box protein D1, Forkhead-related protein FKHL8, Forkhead-related transcription factor 4, FREAC-4, FOXD1, FKHL8, FREAC4

**Target/Specificity**

This FOXD1 antibody is generated from rabbits immunized with a KLH conjugated synthetic peptide between 1-30 amino acids from the N-terminal region of human FOXD1.

**Dilution**

IF~~1:25

WB~~1:2000

IHC-P~~1:10~50

**Format**

Purified polyclonal antibody supplied in PBS with 0.09% (W/V) sodium azide. This antibody is purified through a protein A column, followed by peptide affinity purification.

**Storage**

Maintain refrigerated at 2-8°C for up to 2 weeks. For long term storage store at -20°C in small aliquots to prevent freeze-thaw cycles.

**Precautions**

FOXD1 Antibody (N-term) is for research use only and not for use in diagnostic or therapeutic procedures.

**FOXD1 Antibody (N-term) - Protein Information****Name** FOXD1

**Synonyms** FKHL8, FREAC4

**Function** Transcription factor involved in regulation of gene expression in a variety of processes, including formation of positional identity in the developing retina, regionalization of the optic chiasm, morphogenesis of the kidney, and neuralization of ectodermal cells (By similarity). Involved in transcriptional activation of PGF and C3 genes (PubMed:[27805902](#)).

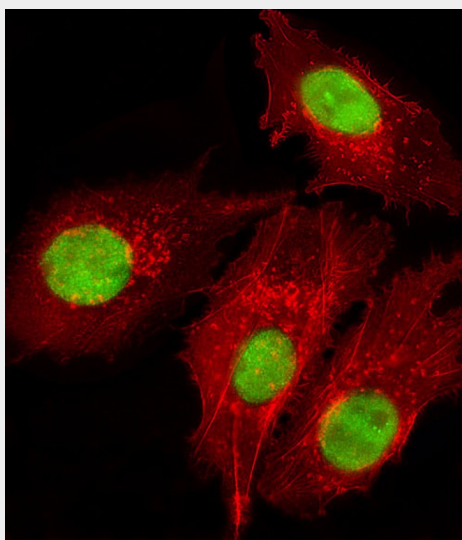
**Cellular Location**

Nucleus.

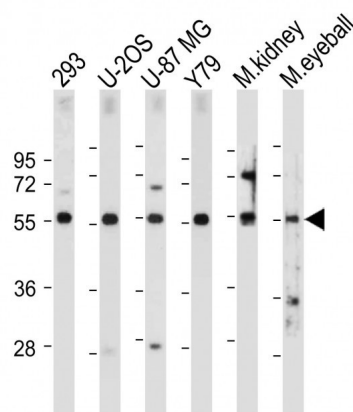
**FOXD1 Antibody (N-term) - Protocols**

Provided below are standard protocols that you may find useful for product applications.

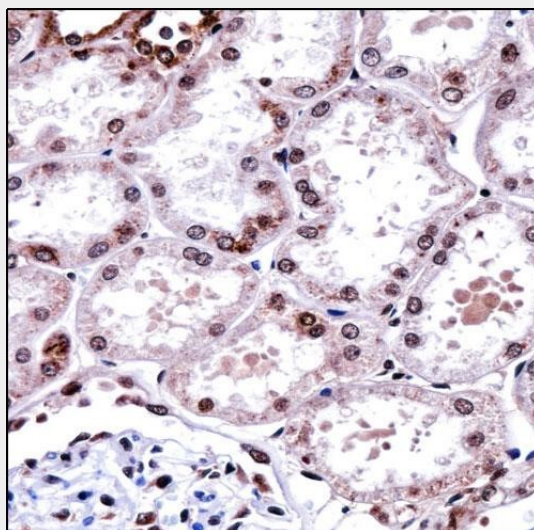
- [Western Blot](#)
- [Blocking Peptides](#)
- [Dot Blot](#)
- [Immunohistochemistry](#)
- [Immunofluorescence](#)
- [Immunoprecipitation](#)
- [Flow Cytometry](#)
- [Cell Culture](#)

**FOXD1 Antibody (N-term) - Images**

Immunofluorescent analysis of 4% paraformaldehyde-fixed, 0.1% Triton X-100 permeabilized HepG2 (human liver hepatocellular carcinoma cell line) cells labeling FOXD1 with AP14388A at 1/25 dilution, followed by Dylight® 488-conjugated goat anti-rabbit IgG (NK179883) secondary antibody at 1/200 dilution (green). Immunofluorescence image showing nucleus staining on HepG2 cell line. Cytoplasmic actin is detected with Dylight® 554 Phalloidin (PD18466410) at 1/100 dilution (red).



All lanes : Anti-FOXD1 Antibody (N-term) at 1:2000 dilution Lane 1: 293 whole cell lysate Lane 2: U-2OS whole cell lysate Lane 3: U-87 MG whole cell lysate Lane 4: Y79 whole cell lysate Lane 5: Mouse kidney tissue lysate Lane 6: Mouse eyeball tissue lysate Lysates/proteins at 20 µg per lane. Secondary Goat Anti-Rabbit IgG, (H+L), Peroxidase conjugated at 1/10000 dilution. Predicted band size : 46 kDa Blocking/Dilution buffer: 5% NFDM/TBST.



FOXD1 Antibody (N-term) (AP14388a) immunohistochemistry analysis in formalin fixed and paraffin embedded human kidney tissue followed by peroxidase conjugation of the secondary antibody and DAB staining. This data demonstrates the use of FOXD1 Antibody (N-term) for immunohistochemistry. Clinical relevance has not been evaluated.

#### **FOXD1 Antibody (N-term) - Background**

This intronless gene belongs to the forkhead family of transcription factors which is characterized by a distinct forkhead domain. The specific function of this gene has not yet been determined; however, it may play a role in tumor formation.

#### **FOXD1 Antibody (N-term) - References**

Berg, D.T., et al. J. Biol. Chem. 280(15):14943-14947(2005)  
Ernstsson, S., et al. J. Biol. Chem. 271(35):21094-21099(1996)  
Larsson, C., et al. Genomics 30(3):464-469(1995)

Pierrou, S., et al. EMBO J. 13(20):5002-5012(1994)