

**PPM1G Antibody (N-term)**  
**Affinity Purified Rabbit Polyclonal Antibody (Pab)**  
**Catalog # AP14396a**

**Specification**

---

**PPM1G Antibody (N-term) - Product Information**

Application	WB,E
Primary Accession	<a href="#">O15355</a>
Other Accession	<a href="#">Q61074</a> , <a href="#">Q4R4V2</a> , <a href="#">P79126</a> , <a href="#">NP_817092.1</a> , <a href="#">F1LN15</a>
Reactivity	Human
Predicted	Bovine, Monkey, Mouse, Rat
Host	Rabbit
Clonality	Polyclonal
Isotype	Rabbit IgG
Antigen Region	64-92

**PPM1G Antibody (N-term) - Additional Information**

**Gene ID** 5496

**Other Names**

Protein phosphatase 1G, Protein phosphatase 1C, Protein phosphatase 2C isoform gamma, PP2C-gamma, Protein phosphatase magnesium-dependent 1 gamma, PPM1G, PPM1C

**Target/Specificity**

This PPM1G antibody is generated from rabbits immunized with a KLH conjugated synthetic peptide between 64-92 amino acids from the N-terminal region of human PPM1G.

**Dilution**

WB~~1:1000

**Format**

Purified polyclonal antibody supplied in PBS with 0.09% (W/V) sodium azide. This antibody is purified through a protein A column, followed by peptide affinity purification.

**Storage**

Maintain refrigerated at 2-8°C for up to 2 weeks. For long term storage store at -20°C in small aliquots to prevent freeze-thaw cycles.

**Precautions**

PPM1G Antibody (N-term) is for research use only and not for use in diagnostic or therapeutic procedures.

**PPM1G Antibody (N-term) - Protein Information**

**Name** PPM1G

**Synonyms** PPM1C**Cellular Location**

Cytoplasm. Membrane; Lipid-anchor

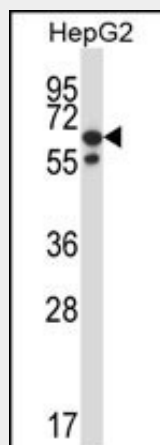
**Tissue Location**

Widely expressed. Most abundant in testis, skeletal muscle, and heart

**PPM1G Antibody (N-term) - Protocols**

Provided below are standard protocols that you may find useful for product applications.

- [Western Blot](#)
- [Blocking Peptides](#)
- [Dot Blot](#)
- [Immunohistochemistry](#)
- [Immunofluorescence](#)
- [Immunoprecipitation](#)
- [Flow Cytometry](#)
- [Cell Culture](#)

**PPM1G Antibody (N-term) - Images**

PPM1G Antibody (N-term) (Cat. #AP14396a) western blot analysis in HepG2 cell line lysates (35ug/lane). This demonstrates the PPM1G antibody detected the PPM1G protein (arrow).

**PPM1G Antibody (N-term) - Background**

The protein encoded by this gene is a member of the PP2C family of Ser/Thr protein phosphatases. PP2C family members are known to be negative regulators of cell stress response pathways. This phosphatase is found to be responsible for the dephosphorylation of Pre-mRNA splicing factors, which is important for the formation of functional spliceosome. Studies of a similar gene in mice suggested a role of this phosphatase in regulating cell cycle progression.

**PPM1G Antibody (N-term) - References**

Dick, D.M., et al. Am. J. Med. Genet. B Neuropsychiatr. Genet. 153B (6), 1179-1188 (2010) :

Suh, E.J., et al. Biochem. Biophys. Res. Commun. 386(3):467-470(2009)  
Petri, S., et al. J. Cell Biol. 179(3):451-465(2007)  
Allemand, E., et al. Nat. Struct. Mol. Biol. 14(7):630-638(2007)  
Matsuoka, S., et al. Science 316(5828):1160-1166(2007)