

**POTE Antibody (C-term L446)**  
**Affinity Purified Rabbit Polyclonal Antibody (Pab)**  
**Catalog # AP1439a**

**Specification**

---

**POTE Antibody (C-term L446) - Product Information**

Application	WB, IHC-P,E
Primary Accession	<a href="#">Q86YR6</a>
Other Accession	<a href="#">B2RU33</a>
Reactivity	Human
Host	Rabbit
Clonality	Polyclonal
Isotype	Rabbit IgG
Calculated MW	66394
Antigen Region	438-468

**POTE Antibody (C-term L446) - Additional Information**

**Gene ID** 100288966;317754

**Other Names**

POTE ankyrin domain family member D, ANKRD26-like family B member 3, Ankyrin repeat domain-containing protein 21, Prostate, ovary, testis-expressed protein, Protein POTE, POTED, A26B3, ANKRD21, POTE

**Target/Specificity**

This POTE antibody is generated from rabbits immunized with a KLH conjugated synthetic peptide between 438~468 amino acids from the C-term region of human POTE.

**Dilution**

WB~~1:500

IHC-P~~1:10~50

**Format**

Purified polyclonal antibody supplied in PBS with 0.09% (W/V) sodium azide. This antibody is purified through a protein A column, followed by peptide affinity purification.

**Storage**

Maintain refrigerated at 2-8°C for up to 2 weeks. For long term storage store at -20°C in small aliquots to prevent freeze-thaw cycles.

**Precautions**

POTE Antibody (C-term L446) is for research use only and not for use in diagnostic or therapeutic procedures.

**POTE Antibody (C-term L446) - Protein Information**

**Name** POTED

**Synonyms** A26B3, ANKRD21, POTE

**Cellular Location**

Cell membrane; Peripheral membrane protein

**Tissue Location**

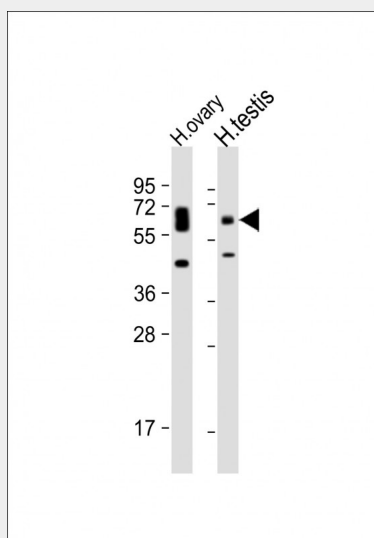
Expressed in prostate, ovary, testis, placenta and prostate cancer cell lines. Localizes to basal and terminal prostate epithelial cells.

**POTE Antibody (C-term L446) - Protocols**

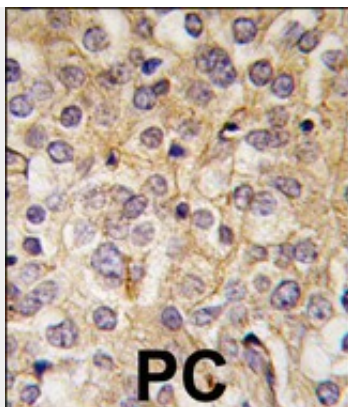
Provided below are standard protocols that you may find useful for product applications.

- [Western Blot](#)
- [Blocking Peptides](#)
- [Dot Blot](#)
- [Immunohistochemistry](#)
- [Immunofluorescence](#)
- [Immunoprecipitation](#)
- [Flow Cytometry](#)
- [Cell Culture](#)

**POTE Antibody (C-term L446) - Images**



All lanes : Anti-POTE Antibody (C-term L446) at 1:500 dilution Lane 1: human ovary lysate Lane 2: human testis lysate Lysates/proteins at 20 µg per lane. Secondary Goat Anti-Rabbit IgG, (H+L), Peroxidase conjugated at 1/10000 dilution. Predicted band size : 66 kDa Blocking/Dilution buffer: 5% NFDM/TBST.



Formalin-fixed and paraffin-embedded human prostata carcinoma tissue reacted with POTE antibody (C-term L446), which was peroxidase-conjugated to the secondary antibody, followed by DAB staining. This data demonstrates the use of this antibody for immunohistochemistry; clinical relevance has not been evaluated.

#### **POTE Antibody (C-term L446) - Background**

POTE, is a highly homologous gene family located on numerous chromosomes and expressed in prostate, ovary, testis, placenta, and prostate cancer. The POTE protein contains seven ankyrin repeats between amino acids 140 and 380. Expression of POTE in prostate cancer and its undetectable expression in normal essential tissues make POTE a candidate for the immunotherapy of prostate cancer. The existence of a large number of closely related but rapidly diverging members, their location on multiple chromosomes and their limited expression pattern suggest an important role for the POTE gene family in reproductive processes.

#### **POTE Antibody (C-term L446) - References**

Bera T.K., Proc. Natl. Acad. Sci. U.S.A. 99:16975-16980(2002).  
Bera,T.K., Gene 337, 45-53 (2004)