

DSG2 Antibody (C-term)
Affinity Purified Rabbit Polyclonal Antibody (Pab)
Catalog # AP14404b**Specification**

DSG2 Antibody (C-term) - Product Information

Application	WB, IHC-P,E
Primary Accession	Q14126
Other Accession	NP_001934.2
Reactivity	Human
Host	Rabbit
Clonality	Polyclonal
Isotype	Rabbit IgG
Calculated MW	122294
Antigen Region	829-857

DSG2 Antibody (C-term) - Additional Information**Gene ID** 1829**Other Names**

Desmoglein-2, Cadherin family member 5, HDGC, DSG2, CDHF5

Target/Specificity

This DSG2 antibody is generated from rabbits immunized with a KLH conjugated synthetic peptide between 829-857 amino acids from the C-terminal region of human DSG2.

Dilution

WB~~1:1000

IHC-P~~1:10~50

Format

Purified polyclonal antibody supplied in PBS with 0.09% (W/V) sodium azide. This antibody is purified through a protein A column, followed by peptide affinity purification.

Storage

Maintain refrigerated at 2-8°C for up to 2 weeks. For long term storage store at -20°C in small aliquots to prevent freeze-thaw cycles.

Precautions

DSG2 Antibody (C-term) is for research use only and not for use in diagnostic or therapeutic procedures.

DSG2 Antibody (C-term) - Protein Information**Name** DSG2**Synonyms** CDHF5

Function Component of intercellular desmosome junctions. Involved in the interaction of plaque proteins and intermediate filaments mediating cell-cell adhesion.

Cellular Location

Cell membrane; Single-pass type I membrane protein. Cell junction, desmosome

Tissue Location

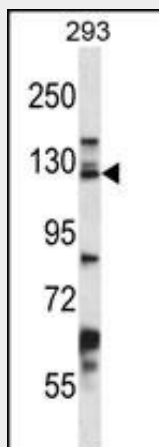
All of the tissues tested and carcinomas.

DSG2 Antibody (C-term) - Protocols

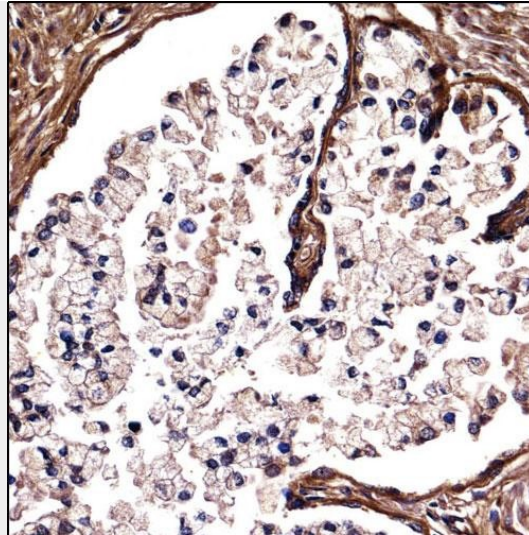
Provided below are standard protocols that you may find useful for product applications.

- [Western Blot](#)
- [Blocking Peptides](#)
- [Dot Blot](#)
- [Immunohistochemistry](#)
- [Immunofluorescence](#)
- [Immunoprecipitation](#)
- [Flow Cytometry](#)
- [Cell Culture](#)

DSG2 Antibody (C-term) - Images



DSG2 Antibody (C-term) (Cat. #AP14404b) western blot analysis in 293 cell line lysates (35ug/lane). This demonstrates the DSG2 antibody detected the DSG2 protein (arrow).



DSG2 Antibody (C-term) (AP14404b) immunohistochemistry analysis in formalin fixed and paraffin embedded human prostate tissue followed by peroxidase conjugation of the secondary antibody and DAB staining. This data demonstrates the use of DSG2 Antibody (C-term) for immunohistochemistry. Clinical relevance has not been evaluated.

DSG2 Antibody (C-term) - Background

Desmosomes are cell-cell junctions between epithelial, myocardial, and certain other cell types. This gene product is a calcium-binding transmembrane glycoprotein component of desmosomes in vertebrate epithelial cells. Currently, three desmoglein subfamily members have been identified and all are members of the cadherin cell adhesion molecule superfamily. These desmoglein gene family members are located in a cluster on chromosome 18. This second family member is expressed in colon, colon carcinoma, and other simple and stratified epithelial-derived cell lines. Mutations in this gene have been associated with arrhythmogenic right ventricular dysplasia, familial, 10.

DSG2 Antibody (C-term) - References

Bailey, S.D., et al. Diabetes Care 33(10):2250-2253(2010)
 Fressart, V., et al. Europace 12(6):861-868(2010)
 Schlegel, N., et al. Am. J. Physiol. Gastrointest. Liver Physiol. 298 (5), G774-G783 (2010) :
 Cox, M.G., et al. Circ Arrhythm Electrophysiol 3(2):126-133(2010)
 Buxens, A., et al. Scand J Med Sci Sports (2010) In press :