

Mouse Map4k3 Antibody (Center)
Affinity Purified Rabbit Polyclonal Antibody (Pab)
Catalog # AP14443C**Specification**

Mouse Map4k3 Antibody (Center) - Product Information

Application	WB, IHC-P, FC,E
Primary Accession	Q99JP0
Other Accession	Q924I2 , Q8IVH8
Reactivity	Human, Mouse
Predicted	Rat
Host	Rabbit
Clonality	Polyclonal
Isotype	Rabbit IgG
Calculated MW	101119
Antigen Region	501-529

Mouse Map4k3 Antibody (Center) - Additional Information**Gene ID** 225028**Other Names**

Mitogen-activated protein kinase kinase kinase kinase 3, Germinal center kinase-related protein kinase, GLK, MAPK/ERK kinase kinase kinase 3, MEK kinase kinase 3, MEKKK 3, Map4k3

Target/Specificity

This Mouse Map4k3 antibody is generated from rabbits immunized with a KLH conjugated synthetic peptide between 501-529 amino acids from the Central region of mouse Map4k3.

Dilution

WB~~1:1000
IHC-P~~1:10~50
FC~~1:10~50

Format

Purified polyclonal antibody supplied in PBS with 0.09% (W/V) sodium azide. This antibody is purified through a protein A column, followed by peptide affinity purification.

Storage

Maintain refrigerated at 2-8°C for up to 2 weeks. For long term storage store at -20°C in small aliquots to prevent freeze-thaw cycles.

Precautions

Mouse Map4k3 Antibody (Center) is for research use only and not for use in diagnostic or therapeutic procedures.

Mouse Map4k3 Antibody (Center) - Protein Information

Name Map4k3

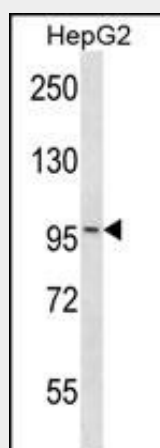
Function May play a role in the response to environmental stress. Appears to act upstream of the JUN N-terminal pathway (By similarity).

Mouse Map4k3 Antibody (Center) - Protocols

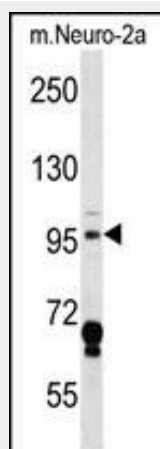
Provided below are standard protocols that you may find useful for product applications.

- [Western Blot](#)
- [Blocking Peptides](#)
- [Dot Blot](#)
- [Immunohistochemistry](#)
- [Immunofluorescence](#)
- [Immunoprecipitation](#)
- [Flow Cytometry](#)
- [Cell Culture](#)

Mouse Map4k3 Antibody (Center) - Images

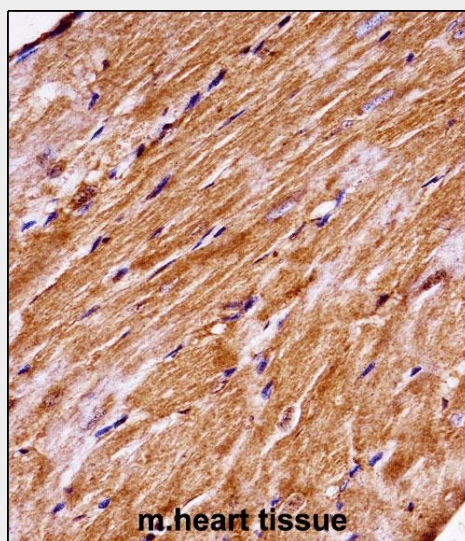


Mouse Map4k3 Antibody (Center) (Cat. #AP14443c) western blot analysis in HepG2 cell line lysates (35ug/lane). This demonstrates the Map4k3 antibody detected the Map4k3 protein (arrow).

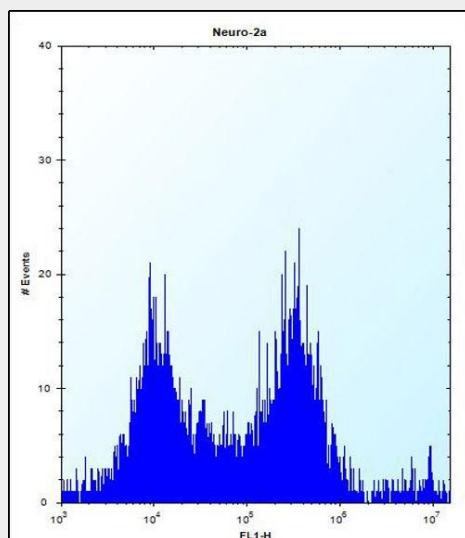


Mouse Map4k3 Antibody (Center) (Cat. #AP14443c) western blot analysis in mouse Neuro-2a cell line lysates (35ug/lane). This demonstrates the Map4k3 antibody detected the Map4k3 protein

(arrow).



Mouse Map4k3 Antibody (Center) (AP14443c) immunohistochemistry analysis in formalin fixed and paraffin embedded mouse heart tissue followed by peroxidase conjugation of the secondary antibody and DAB staining. This data demonstrates the use of Mouse Map4k3 Antibody (Center) for immunohistochemistry. Clinical relevance has not been evaluated.



Mouse Map4k3 Antibody (Center) (Cat. #AP14443c) flow cytometric analysis of Neuro-2a cells (right histogram) compared to a negative control cell (left histogram). FITC-conjugated donkey-anti-rabbit secondary antibodies were used for the analysis.

Mouse Map4k3 Antibody (Center) - Background

Map4k3 may play a role in the response to environmental stress. Appears to act upstream of the JUN N-terminal pathway (By similarity).