

**Mouse Mapk4 Antibody (N-term)**  
**Affinity Purified Rabbit Polyclonal Antibody (Pab)**  
**Catalog # AP14445a****Specification**

---

**Mouse Mapk4 Antibody (N-term) - Product Information**

Application	WB, IHC-P,E
Primary Accession	<a href="#">Q6P5G0</a>
Other Accession	<a href="#">Q63454</a> , <a href="#">NP_766220.2</a>
Reactivity	Human, Mouse
Predicted	Rat
Host	Rabbit
Clonality	Polyclonal
Isotype	Rabbit IgG
Calculated MW	65574
Antigen Region	67-94

**Mouse Mapk4 Antibody (N-term) - Additional Information****Gene ID** 225724**Other Names**

Mitogen-activated protein kinase 4, MAP kinase 4, MAPK 4, Extracellular signal-regulated kinase 4, ERK-4, Mapk4, Erk4, Prkm4

**Target/Specificity**

This Mouse Mapk4 antibody is generated from rabbits immunized with a KLH conjugated synthetic peptide between 67-94 amino acids from the N-terminal region of mouse Mapk4.

**Dilution**

WB~~1:1000  
IHC-P~~1:10~50

**Format**

Purified polyclonal antibody supplied in PBS with 0.09% (W/V) sodium azide. This antibody is purified through a protein A column, followed by peptide affinity purification.

**Storage**

Maintain refrigerated at 2-8°C for up to 2 weeks. For long term storage store at -20°C in small aliquots to prevent freeze-thaw cycles.

**Precautions**

Mouse Mapk4 Antibody (N-term) is for research use only and not for use in diagnostic or therapeutic procedures.

**Mouse Mapk4 Antibody (N-term) - Protein Information****Name** Mapk4

**Synonyms** Erk4, Prkm4

**Function** Atypical MAPK protein. Phosphorylates microtubule-associated protein 2 (MAP2) and MAPKAPK5. The precise role of the complex formed with MAPKAPK5 is still unclear, but the complex follows a complex set of phosphorylation events: upon interaction with atypical MAPKAPK5, ERK4/MAPK4 is phosphorylated at Ser-186 and then mediates phosphorylation and activation of MAPKAPK5, which in turn phosphorylates ERK4/MAPK4. May promote entry in the cell cycle.

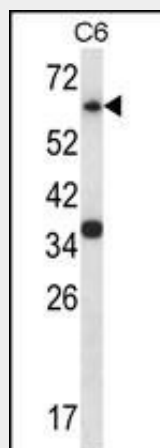
**Cellular Location**

Cytoplasm. Nucleus. Note=Translocates to the cytoplasm following interaction with MAPKAPK5

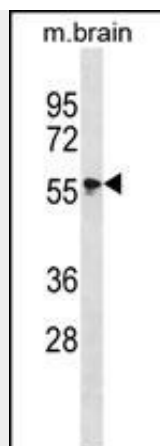
**Mouse Mapk4 Antibody (N-term) - Protocols**

Provided below are standard protocols that you may find useful for product applications.

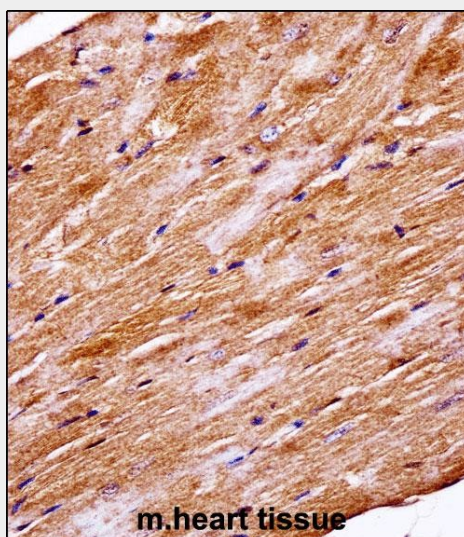
- [Western Blot](#)
- [Blocking Peptides](#)
- [Dot Blot](#)
- [Immunohistochemistry](#)
- [Immunofluorescence](#)
- [Immunoprecipitation](#)
- [Flow Cytometry](#)
- [Cell Culture](#)

**Mouse Mapk4 Antibody (N-term) - Images**

Mouse Mapk4 Antibody (N-term) (Cat. #AP14445a) western blot analysis in C6 cell line lysates (35ug/lane). This demonstrates the Mapk4 antibody detected the Mapk4 protein (arrow).



Mouse Mapk4 Antibody (N-term) (Cat. #AP14445a) western blot analysis in mouse brain tissue lysates (35ug/lane). This demonstrates the Mapk4 antibody detected the Mapk4 protein (arrow).



Mouse Mapk4 Antibody (N-term) (AP14445a) immunohistochemistry analysis in formalin fixed and paraffin embedded mouse heart tissue followed by peroxidase conjugation of the secondary antibody and DAB staining. This data demonstrates the use of Mouse Mapk4 Antibody (N-term) for immunohistochemistry. Clinical relevance has not been evaluated.

### Mouse Mapk4 Antibody (N-term) - Background

Phosphorylates microtubule-associated protein 2 (MAP2). May promote entry in the cell cycle (By similarity).

### Mouse Mapk4 Antibody (N-term) - References

- Klinger, S., et al. Proc. Natl. Acad. Sci. U.S.A. 106(39):16710-16715(2009)
- Kesavan, C., et al. Bone 41(2):223-230(2007)
- Kant, S., et al. J. Biol. Chem. 281(46):35511-35519(2006)
- Zambrowicz, B.P., et al. Proc. Natl. Acad. Sci. U.S.A. 100(24):14109-14114(2003)
- Xu, H., et al. J. Biol. Chem. 278(32):30187-30192(2003)