

Mouse Nek9 Antibody (Center)
Affinity Purified Rabbit Polyclonal Antibody (Pab)
Catalog # AP14450c

Specification

Mouse Nek9 Antibody (Center) - Product Information

Application	WB,E
Primary Accession	Q8K1R7
Reactivity	Human, Mouse
Host	Rabbit
Clonality	Polyclonal
Isotype	Rabbit IgG
Calculated MW	107143
Antigen Region	503-530

Mouse Nek9 Antibody (Center) - Additional Information

Gene ID 217718

Other Names

Serine/threonine-protein kinase Nek9, Nercc1 kinase, Never in mitosis A-related kinase 9, NimA-related protein kinase 9, Nek9, Nercc

Target/Specificity

This Mouse Nek9 antibody is generated from rabbits immunized with a KLH conjugated synthetic peptide between 503-530 amino acids from the Central region of mouse Nek9.

Dilution

WB~~1:1000

Format

Purified polyclonal antibody supplied in PBS with 0.09% (W/V) sodium azide. This antibody is purified through a protein A column, followed by peptide affinity purification.

Storage

Maintain refrigerated at 2-8°C for up to 2 weeks. For long term storage store at -20°C in small aliquots to prevent freeze-thaw cycles.

Precautions

Mouse Nek9 Antibody (Center) is for research use only and not for use in diagnostic or therapeutic procedures.

Mouse Nek9 Antibody (Center) - Protein Information

Name Nek9 {ECO:0000303|PubMed:26522158, ECO:0000312|MGI:MGI:2387995}

Function Pleiotropic regulator of mitotic progression, participating in the control of spindle dynamics and chromosome separation. Phosphorylates different histones, myelin basic protein,

beta-casein, and BICD2. Phosphorylates histone H3 on serine and threonine residues and beta-casein on serine residues. Important for G1/S transition and S phase progression. Phosphorylates NEK6 and NEK7 and stimulates their activity by releasing the autoinhibitory functions of Tyr-108 and Tyr- 97 respectively.

Cellular Location

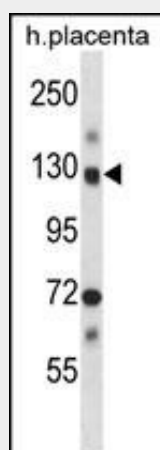
Cytoplasm {ECO:0000250|UniProtKB:Q8TD19}. Nucleus {ECO:0000250|UniProtKB:Q8TD19}

Mouse Nek9 Antibody (Center) - Protocols

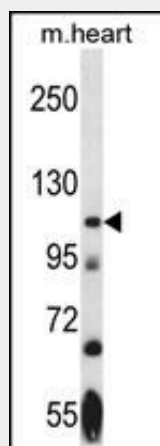
Provided below are standard protocols that you may find useful for product applications.

- [Western Blot](#)
- [Blocking Peptides](#)
- [Dot Blot](#)
- [Immunohistochemistry](#)
- [Immunofluorescence](#)
- [Immunoprecipitation](#)
- [Flow Cytometry](#)
- [Cell Culture](#)

Mouse Nek9 Antibody (Center) - Images



Mouse Nek9 Antibody (Center) (Cat. #AP14450c) western blot analysis in human placenta tissue lysates (35ug/lane). This demonstrates the Nek9 antibody detected the Nek9 protein (arrow).



Mouse Nek9 Antibody (Center) (Cat. #AP14450c) western blot analysis in mouse heart tissue lysates (35ug/lane). This demonstrates the Nek9 antibody detected the Nek9 protein (arrow).

Mouse Nek9 Antibody (Center) - Background

Pleiotropic regulator of mitotic progression, participating in the control of spindle dynamics and chromosome separation. Phosphorylates different histones, myelin basic protein, beta-casein, and BICD2. Phosphorylates histone H3 on serine and threonine residues and beta-casein on serine residues Important for G1/S transition and S phase progression (By similarity).